



# **Absolute White RIP**

## **Software Instruction Manual**

For Windows PC only (Windows 8 / 10 / 11 only)

Software Version 2027

June 2023



## Table of Contents

Absolute White RIP Overview	3
Installation	4
Validating and Activating	7
Importing Graphics	9
White Layer Generation	10
Activate / Configure Rasterization	11
Alignment Buttons	12
Settings Button	13
Page Counter	13
Generate PDF Button	14
Sending a Job to the Printer	14

# Absolute White RIP Overview

Up until now, printing FULL color images for transfer has been a challenge because you have to design a specific white overprint layer in addition to the color layer, and run the paper through the printer twice, and rely on the printer to line up the images on the same page. Most users only print white images for this reason. This is a tedious process that previously required advanced editing software and knowledge.

UNINET's Absolute White RIP does it all for you! It will analyze a full color image, and then create a matching white layer (with automatic choke) to make 2 pass printing as easy and reliable as possible.

The software includes important features such as:

- Automatic Rasterization (with options to adjust shape and size of the rasterization)
- Black color removal
- Automatic mirror
- PDF creation (2 pages, color and white)
- Manual white layer shift (to compensate for registration deviation)

For use with any CMYK printer that allows for swapping of a black cartridge for white.

All Uninet Absolute White branded cartridges come with a free license to use the Absolute White RIP corresponding to the yield of the cartridge.

## **Print and Transfer onto:**

- Natural and synthetic fabric (Light and Dark)
- Mugs and ceramics
- Light, dark and clear labels
- Leather
- Light and dark paper stock
- Glass
- Acrylic
- Wood
- Metal
- Window Cling
- Banners
- And much more!

## **Create unique items – The possibilities are endless!**

- T-shirts and sweatshirts
- Aprons
- Corporate logo shirts
- Mouse pads
- Sports apparel
- Jackets
- Tote bags
- Tattoos
- And much more!

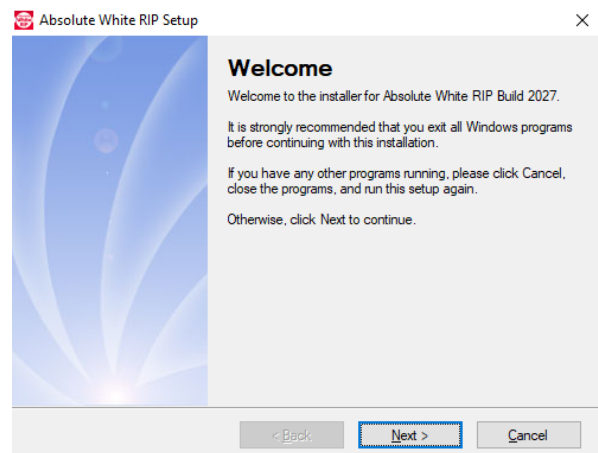
# Absolute White RIP Software Installation

- Make sure all other programs are closed and virus software is uninstalled.
  - ⚠ Failure to uninstall virus software can lead to problems with installation and/or use of software.
  - ⚠ If you keep the virus scan software active after installation, you must add Absolute White RIP to the 'safe programs' list or issues with Absolute White RIP software can result. Windows Defender is the only program which, to date, has not affected the functionality of the RIP.

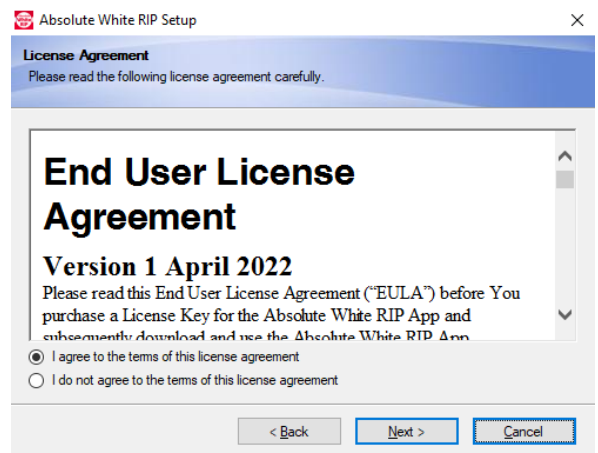
The Absolute White RIP software can be downloaded here: <https://www.icolorprint.com/awr>

- Double-click the installer to begin the installation.

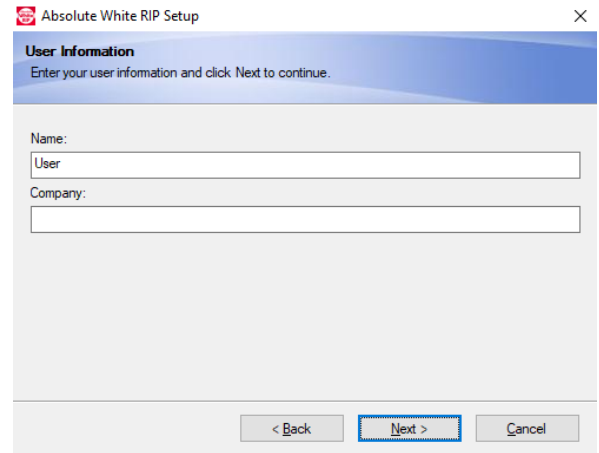
1) An InstallShield Wizard will pop up. Click 'Next'.



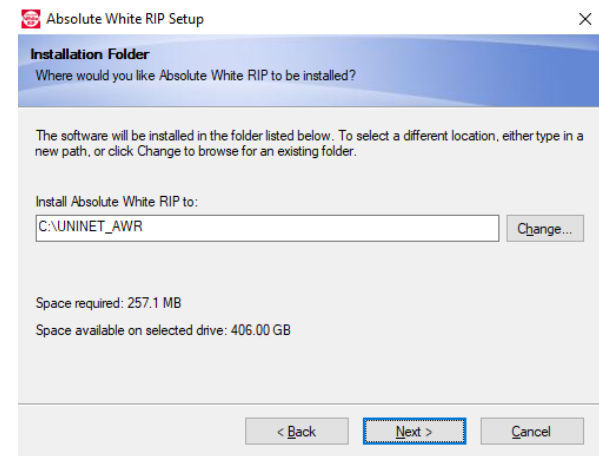
2) Agree to the License Agreement and click 'Next'.



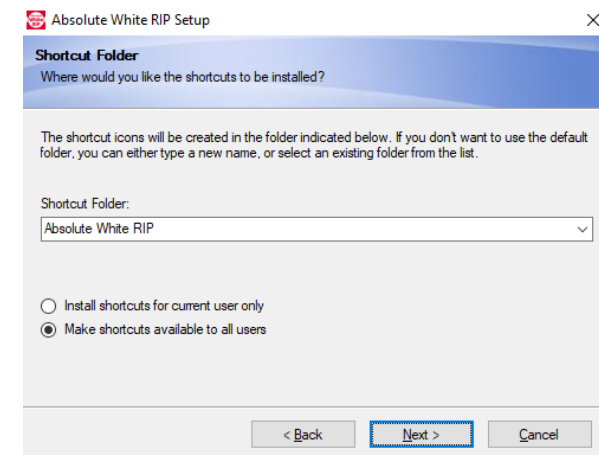
3) Fill your user information and click 'Next'.



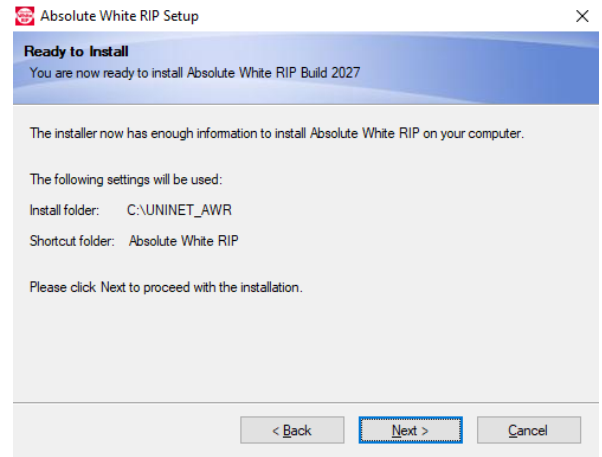
4) Select your Installation Folder. You may choose a different location by creating a new path or by clicking the 'Change' button to browse for an existing folder. Click 'Next'.



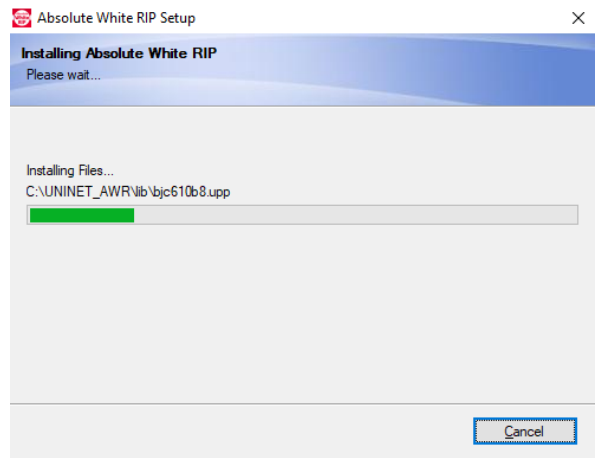
5) Create a Shortcut Folder. This is where the software's shortcut will be installed. You can create a new folder or use the default folder. You can also select whether to install the app to a specific user only or all user profiles on your computer.



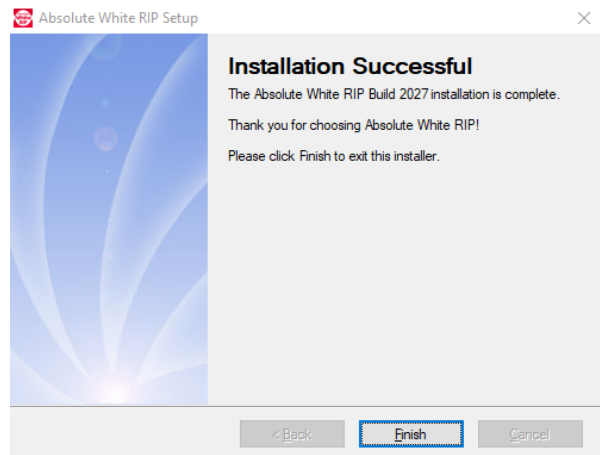
6) Verify the installation path, then click 'Next'.



7) The installation will proceed and may take a few minutes to complete.



8) When the installation process is complete, click 'Finish'.



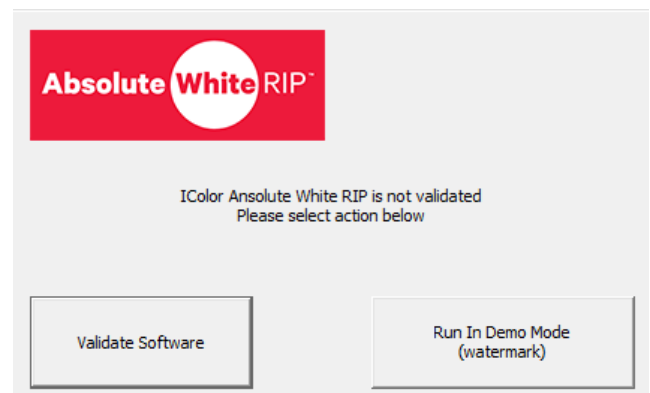
# Validating and Activating the Absolute White RIP Software

Validate your software by going to this link: <https://www.icolorprint.com/get-support/validate-rip-software>

**!** You only need to validate your computer to run the RIP ONCE. Uninstalling the software does NOT remove the validation from your system. You can re-install or upgrade the software as many times as necessary without losing validation as long as it's on the same computer.

**!** Each serial number provides three validations (not three licenses). Each serial number is a license only to run the RIP on one computer. The extra validations are issued to provide redundancy in case of accidental validation loss due to hardware failure (hard-disk crashes, etc.) or other unforeseen events.

1) Launch the Absolute White RIP software by double-clicking the icon. On the pop-up window, select 'Validate'. If you are already running the program in Demo Mode, click About > Software Validation to begin the process.



2) A new window will open, and you will find your System ID. Input your Product Code / Serial Number and copy it along with the System ID into the Validation Portal. Click 'Get Validation Code'.

**Validation portal for Dongleless versions of UNINET® ProRIP Essentials RIP, Absolute White RIP, and SmartCUT Software**

Please read before validating:

- You only need to validate your computer to run the RIP ONCE. Uninstalling the software does NOT remove the validation from your system. You can re-install or upgrade the software as many times as necessary without losing validation as long as it's on the same computer.
- Each serial number provides 3 validations (not 3 licenses). Each serial number is a license to run the RIP on one computer only. The extra validations are issued to provide redundancy in case of accidental loss of validation due to hardware failure (hard-disk crashes, etc.) or other unforeseen events.

Product Code (Serial Number):

System ID:

**Get Validation Code**

(Do not press submit more than once)

3) Once you have validated your Product Code / Serial Number and System ID, the system will show your Validation Code and the Validations remaining. Copy the Validation code from the website to the Software Validation Window and click 'Validate'. Click 'OK'.

**Validation portal for Dongleless versions of UNINET® ProRIP Essentials RIP, Absolute White RIP, and SmartCUT Software**

**Here is your validation code. Please copy this code into your UNINET® IColor software validation window and click on Validate to finish.**

Serial Number: **U2E274F**

System ID: **0259**

Validation Code: **D544**

Validations Remaining: **6**

UNINET IColor Software Validation

Validation (visit site below to validate)

[Click to visit UNINET IColor Validation Site](#)

Product  
Absolute White RIP

Serial Number  
U2E274F

System ID  
0259

Validation Code  
D544

Validate

Exit Without Validating

UNINET IColor Software Validation

Validation (visit site below to validate)

[Click to visit UNINET IColor Validation Site](#)

Product  
Absolute White RIP

Serial Number  
U2E274F

System ID  
0259

Validation Code  
D544

Validation Successful

OK

Validate

Exit Without Validating




# Importing Graphics

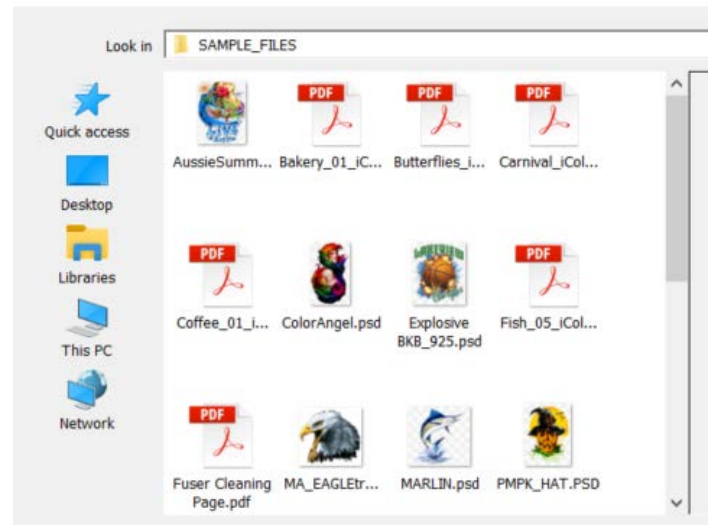


To import a graphic, click the 'Import' Button.

Sample files and artwork are all pre-loaded and available for testing purposes. To load other graphics, navigate to where they are stored and click 'open'.

 Note that graphics imported are automatically mirrored when printed to a pdf. The preview of the graphic will NOT show as mirrored.

Import Graphic



# Display Buttons

Display Original Graphic



Display Print Preview



Display White Layer Only



Display Color Layer Only

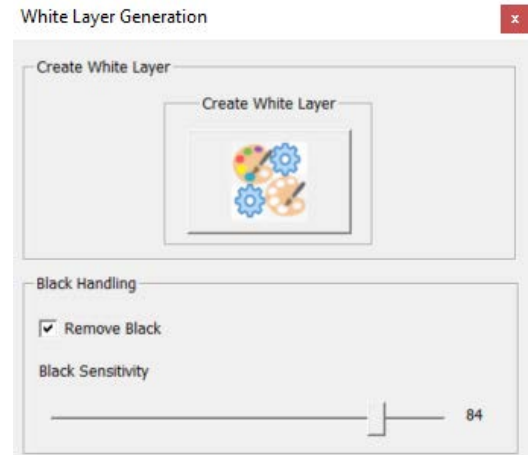


# White Layer Generation



## Remove Black

Printing an image that has the color black within it onto a dark garment using a two-step transfer will not look good or convincing. The Remove Black feature removes most of the area considered leaning towards solid black without getting any transition areas caught up in it. The lower the setting, the lighter the colors you'll remove. This will allow the color of the shirt to represent those areas which are black in color.



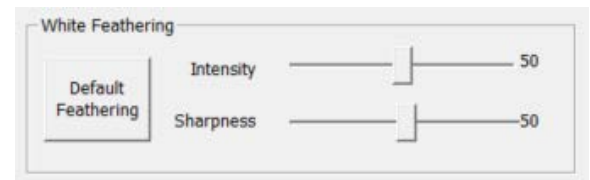
## White Choke

This feature will pull back about 3 pixels of the white layer anywhere the white will overlay your color graphic. This helps prevent gaps or registration issues due to potential misalignment between the white and color inks. The higher the choke, the further back the white overprint or underprint will go.



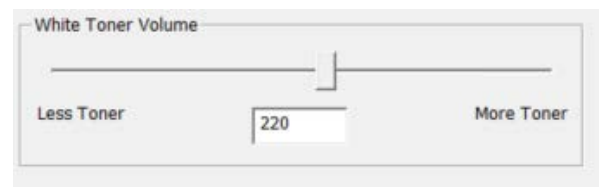
## White Feathering

This controls how the white under-base choke fades into the color layer.



## White Toner Volume

This feature will allow you to control the amount of white toner applied to different areas of an image or design, depending on the desired effect or result. For two-step transfers, more toner could make your print more brittle and less stretchable. 220 is the default setting.



# Toner Reduction (Rasterization)

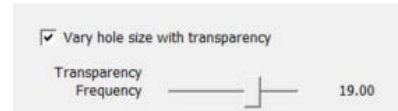
The **Toner Reduction feature** is for rasterizing the artwork to increase the negative space within your graphic. This will allow for better stretching, a longer wash cycle and a softer hand. You can change the *hole size, shape, and frequency* by clicking the **Activate / Configure** icon



You can control the size of the rasterization holes with the 'Hole Size' slider and can change the shape of the rasterization effect with the 'Hole Shape' dropdown.



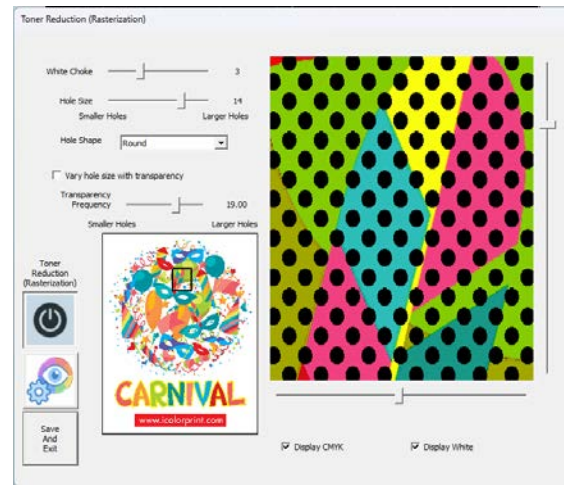
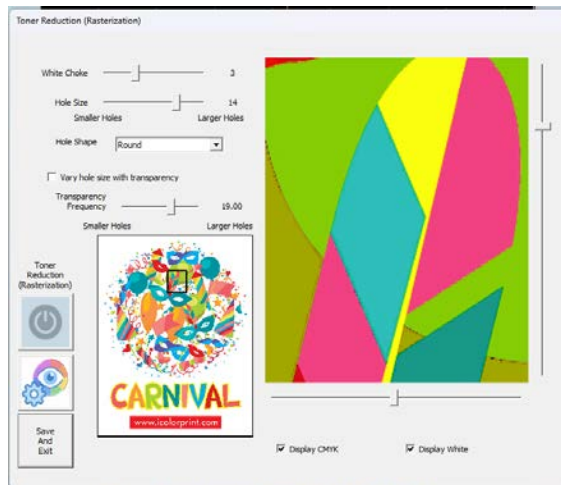
For partial rasterization, tick the **Vary Hole Size with the Transparency** box. This will only apply holes to the outer edge of the graphic and will help represent fades by adding holes that gradually get larger towards the edges of the graphic.



If you make changes in the configuration, click on the **Preview** icon to see those changes.



Once you have applied your desired configuration, click the **power** icon to apply your rasterization, then save and exit.



You will also notice that the Activate/Configure Rasterization button will change.



# Alignment Buttons

Alignment buttons are located on the right side of the panel. Use these to position or reposition your artwork in the workspace. You can change your artboard size on this panel or add a custom size.



Select your artboard size (Paper size being used)



Expand to fill Canvas - Removes Blank Space from around your image



Rotate Clockwise 90 Degrees



Rotate Counter Clockwise 90 Degrees



Rotate Specified Amount



Flip Vertically



Mirror / Un-Mirror



Center Graphic Horizontally



Center Graphic Vertically

# Settings Button



## Output Resolution

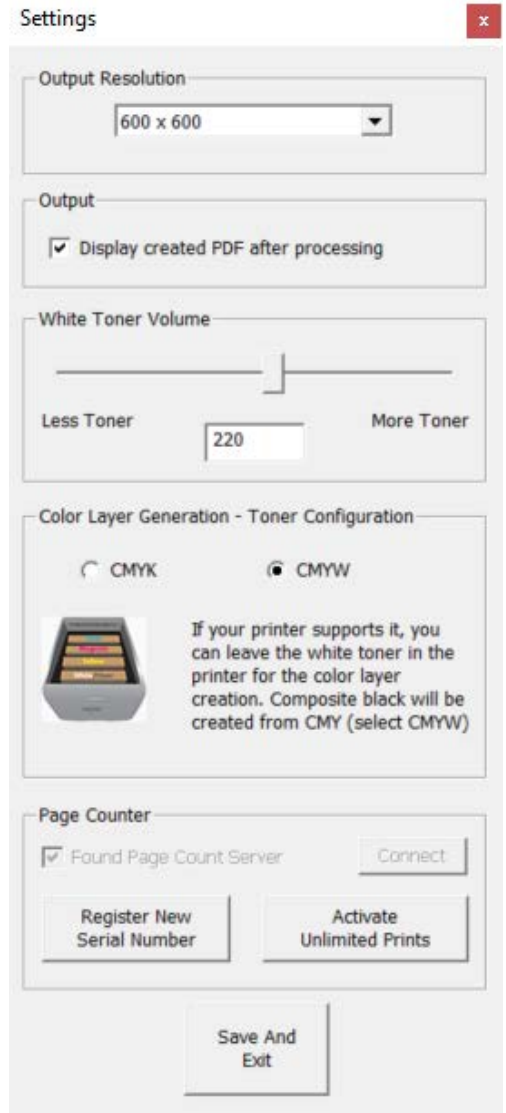
You can adjust the output resolution to match your printer's maximum resolution.

## Output

You can select display PDF after processing. This will automatically load the PDF from your hard drive without having to navigate there and open it.

## Color Layer Generation

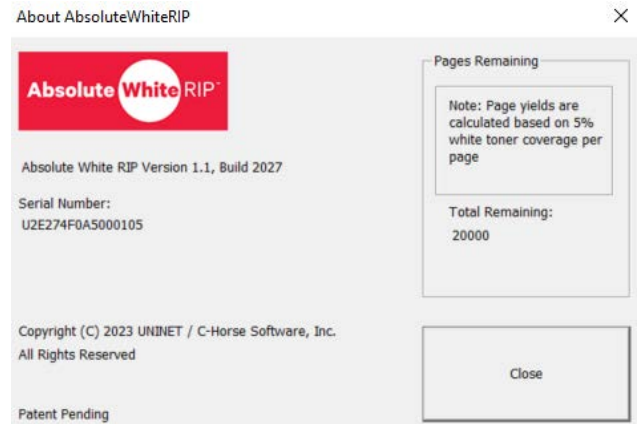
If your printer requires a Cyan - Magenta - Yellow - Black cartridge when running the black print through the machine, select CMYK. If your printer allows you to keep the white cartridge in and is not a single-pass printer like the IColor 560/650, you can select CMYW.



# Page Counter

Each time you purchase and install a UNINET Absolute White Cartridge, click the 'Register New Serial Number' button. This will 'recharge' your page count to the equivalent number of prints according to your cartridge yield. You can also purchase the Unlimited version of the software if so desired. Select the 'Activate Unlimited Prints Button' to activate unlimited prints and input your Serial Number.

You can view the remaining pages on the About tab in the Toolbar. The Absolute White RIP counter will show you the Total remaining pages. The page yield is based on a 5% white toner coverage.

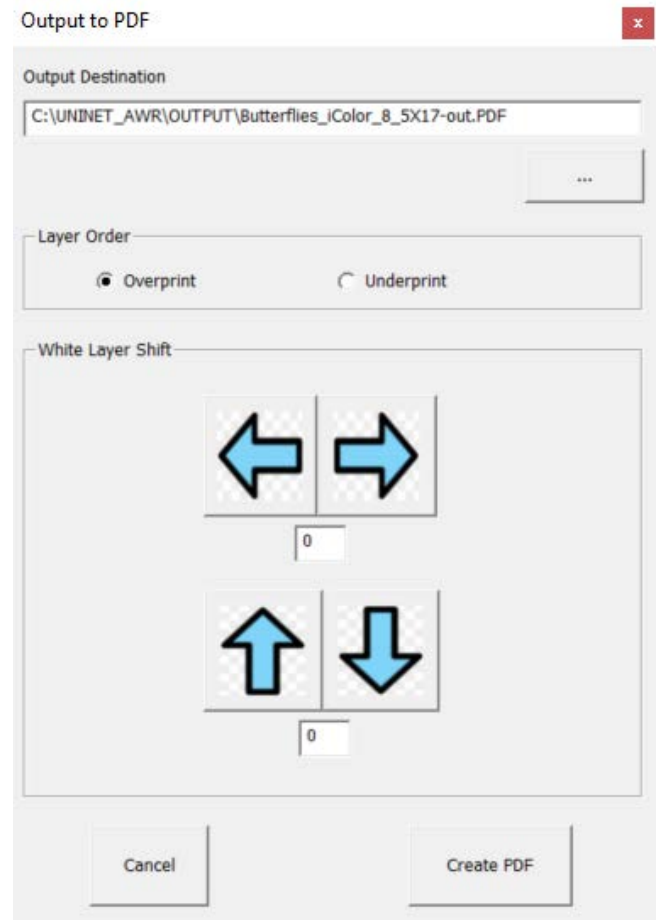


## Generate PDF Button



The Generate PDF button allows you to export to PDF. The Layer Order has two options: Overprint or Underprint. This will determine which page comes first, either the white or the color sheet.

The White Layer Shift option allows you to shift your print to correct for any registration deviation which may occur when printing.



## Printing the PDF

If your printer has CMYK Cartridges, assuming you have already printed the colored page, pull out the black cartridge on your printer and exchange it with the white cartridge. Before printing the white page, select 'Properties' in the 'Print Options/Preference' tab, go to the 'Quality' tab, and tick the 'Print in Black and White' box.

For some printer drivers, it is necessary to go into Properties\Quality and set the color mode to black and white or monochrome only.

To see video instructions for IColor™ Absolute White RIP, visit <https://www.icolorprint.com/video#video-64551ff4bc032b8a9d581ae1>