


UNINET iCOLOR

IColor 600 Digital Color + White Transfer Media Printer User Manual



Table of Contents

Installation Environment	Page 3
IColor 600 Model Summary	Page 3
Installing Consumables	Page 4 - 8
Printer Driver Installation Instructions – USB Connection	Page 9 - 11
Printer Driver Installation Instructions – Network Connection	Page 12 - 14
IColor ProRIP Software Introduction	Page 15 – 17
IColor ProRIP Software Installation	Page 18 – 21
IColor ProRIP First Time Setup	Page 21 – 26
Using the IColor ProRIP Software	Page 27 – 31
Toner Cartridge Replacement Guide	Page 32
Printing with Fluorescent and Dye Sublimation Toner	Page 33
IColor SmartCUT Information	Page 34
Color Registration Procedure	Page 35
IColor 600 Printing Tips	Page 36
IColor Transfer Paper and Media Options	Page 37
IColor 600 Printer Specifications	Page 38

 **Important note about USB Drives shipped with your system:** Do not lose your RIP dongle! This is your license key and if lost, a cost for replacement will be incurred. Associated USB dongles for software such as drivers, RIP programs, SmartCUT and more have a 3 month warranty on the physical drive. UNINET suggests that you limit the physical handling of RIP dongles and use external USB hubs (as an example). If damaged (past the 3 month warranty period), a cost for replacement will be incurred.

June 2022 Edition – A newer version of this manual may be available at www.icolorprint.com/support

Installation Environment

⚠ Install the printer in the following environment.

- **Optimal Humidity Level: 45% - 65%**
- **Optimal Temperature Range: 50°F / 10°C - 75°F / 24°C**

⚠ Operation outside of these recommend parameters may lead to poor results.

⚠ The use of a dedicated circuit of at least 15 amps is required to avoid potential fusing issues.

⚠ Power consumption (max): 8 amps (120v models) or 5 amps (230v models)

IColor 600 Tabloid Digital Color + White Transfer Media Printer

The IColor 600 printer has been developed to produce high-quality, conventional color prints with the out-of-the-box functionality of printing in white.

Please follow the enclosed quick setup guide, as well as this manual, to get started. The IColor 600 comes complete with 4 toner/drum cartridges for full color with white printing (CMYW), as well as a true black toner/drum combination. Simply swap the white for black when white is not needed, for true black printing. With the white cartridge installed, black is produced using composite black (made from CMY), or if true black and white is needed at the same time, just pass the print through the printer a second time.

You will also have the option to add the fluorescent toner or dye sublimation toner upgrade kits, as well as the exclusive IColor security and clear toner options at any time.

Please note that vector and line art images, including text, are likely to produce the best results. For exciting design ideas and suggestions for using the IColor 600 for maximum effect, please visit our website at www.icolorprint.com.

IColor Premium Transfer media has been optimized to provide quality results when used with the printer, enabling the user to produce eye-catching designs which may be applied to a variety of textiles and surfaces.

What's so unique about the IColor 600 Digital Color + White Transfer Media Printer?

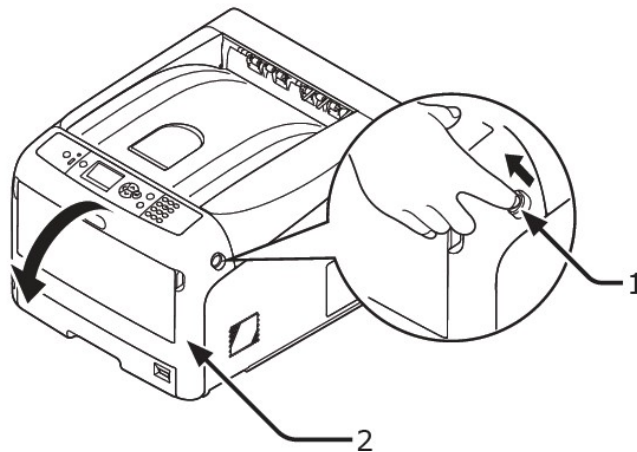
- The smallest form factor and lightest weight printer available for tabloid sized printing.
- The ability to print white as an underprint AND an overprint in the same machine, in one pass, using the IColor ProRIP software.
- The white opacity of UNINET's unique blend of toner is double that of any other brand, giving you the brightest whites and solid background to bring out the vibrancy of your colors.
- The true black cartridge is included with the printer, allowing you to switch to CMYK mode to print items such as brochures and menus when white is not needed.
- Optional dye sublimation, fluorescent, security and clear toner cartridge options.
- Lowest cost and most flexible machine available.
- No maintenance associated with ink based machine is necessary. The iColor 600 is a toner based system.
- Large array of media available for virtually any project.
- Global sales, support and service direct from UNINET or its dealer network.

Installing Consumables

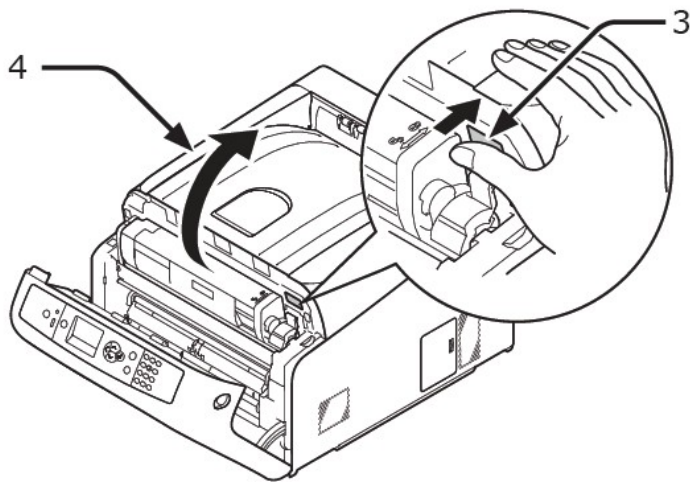
- 1 Insert your finger into the recess on the right side of the printer and pull the front cover open lever (1) to open the front cover (2) forward.

! Note

- Open the front cover gently. If opening rapidly, an MP tray may open.

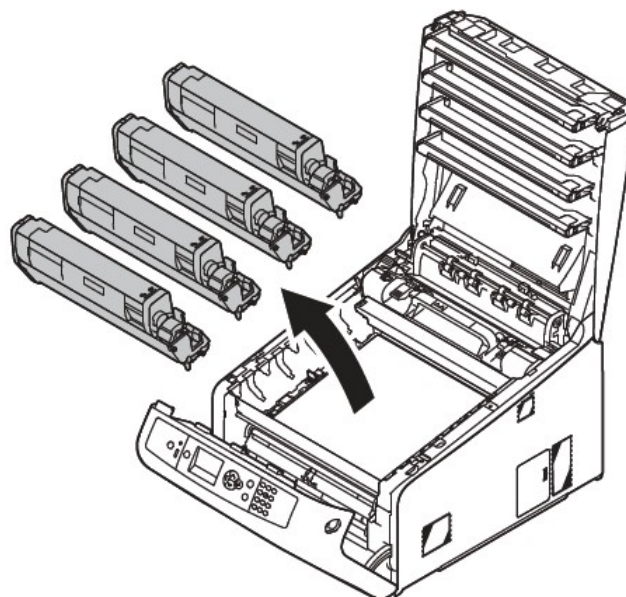


- 2** Press the top cover open button (3) and open the top cover (4).



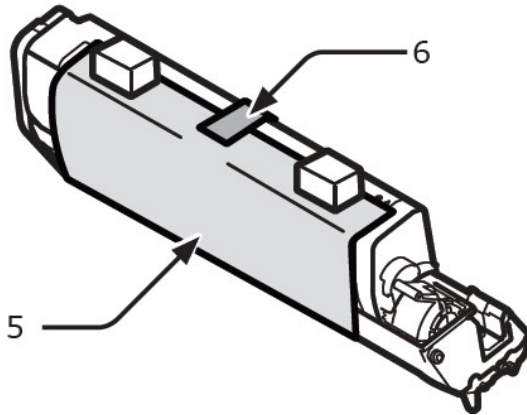
NOTE: The white cartridge that came preinstalled in your machine is already in the locked position. Just remove the protective covering - it is not necessary to turn the blue lever. Doing so can cause toner to spill.

- 3** Take out all four image drums from the printer.

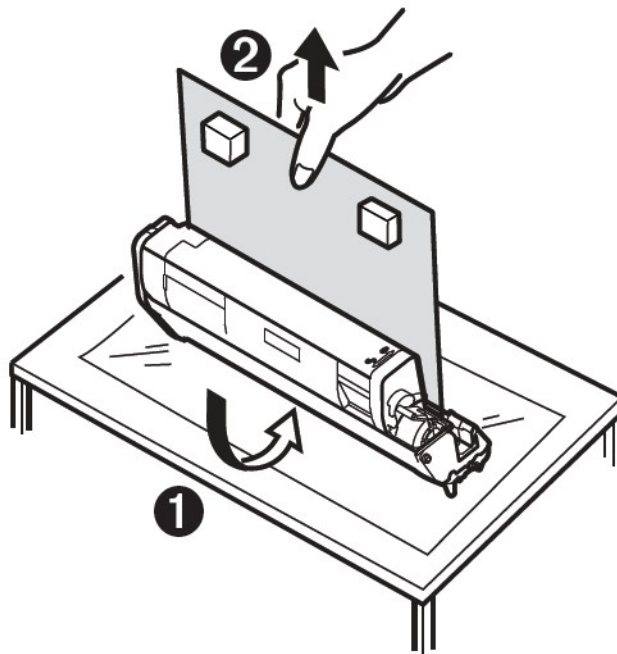


4 Remove the protective sheets from four image drums.

(1) Place an image drum on a newspaper. Remove a tape (6) stuck on a protective sheet (5) and open it.



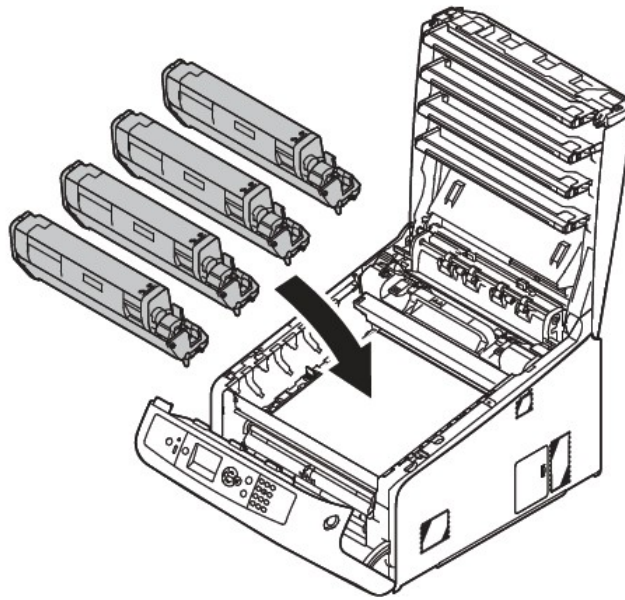
(2) Pull out a protective sheet to the direction of the arrow.



! Note

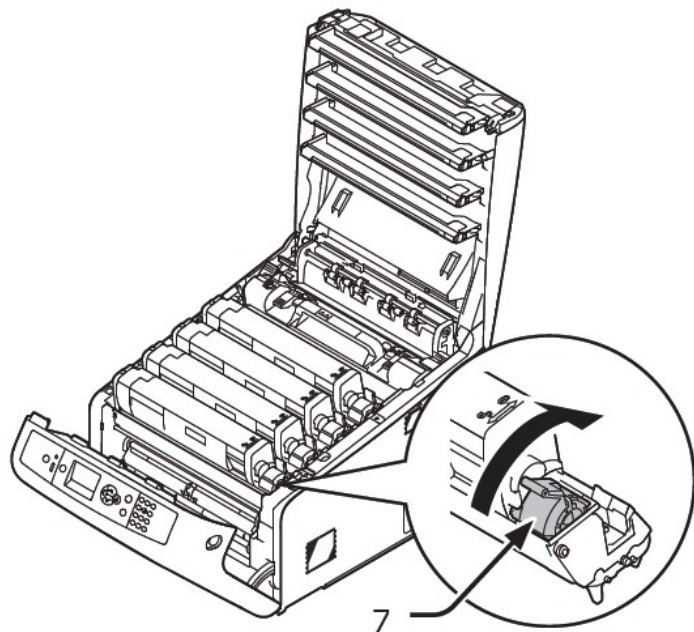
- Do not turn the blue lever of the toner cartridge.

- 5 Put all four image drums back into printer.

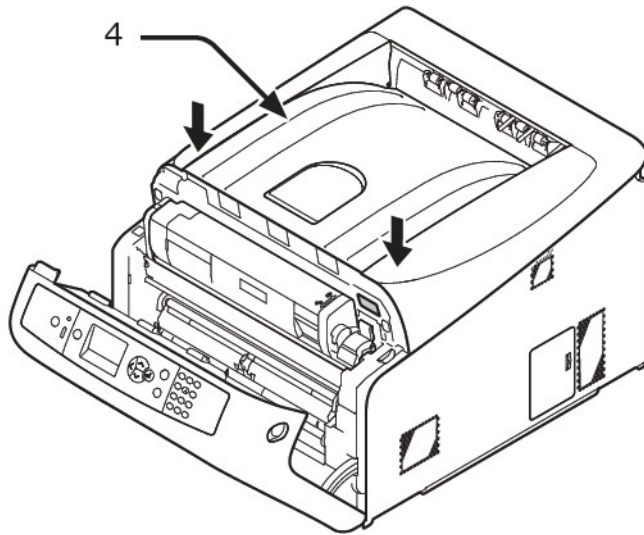


- 6 Turn the blue lever (7) of the toner cartridge in direction of the arrow fully. Turn the levers of all four 4 toner cartridges.

NOTE: Only turn the blue lever on the toner cartridge AFTER it is reinstalled into its corresponding drum unit. Turning the blue lever while disengaged from the drum unit will open the supply and cause the toner to dump out of the cartridge.



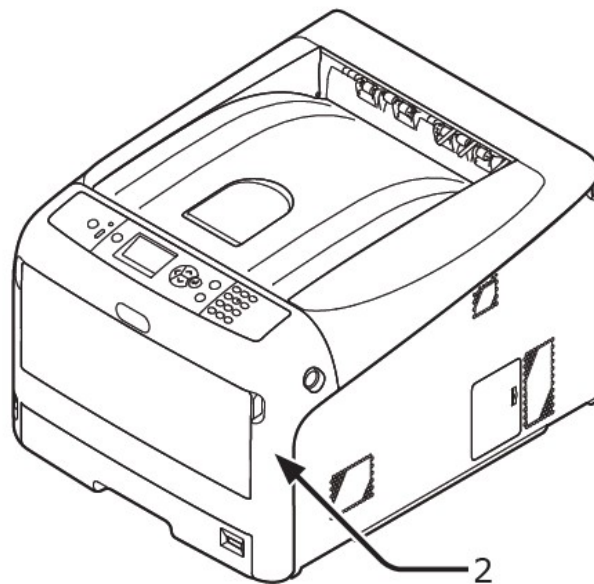
- 7** Close the top cover (4) by pushing the both sides of the cover firmly.



- 8** Close the front cover (2).

! Note

- The front cover cannot be closed securely if the top cover is not closed.
- When the error message that the top or front cover is open does not disappear from the operator panel's display screen, make sure they are closed securely.



IColor 600 Printer Driver Installation (optional)

These following instructions are for Windows 7, 8, and 10 via USB and Network. Only install this driver if you wish to print items outside of the RIP software, when white toner is not needed. UNINET recommends setting up your printer via Network instead of USB for most reliable and fastest performance. If you choose a network installation, you may also optionally install a windows driver that will allow traditional CMYK printing from within windows.

Note: installing a windows driver is not required for full printing capability within the ProRIP software.

 You must have Administrator privileges on the computer to proceed.

USB Setup:

1. Unpack the printer according to the Set-up Guide. **Do not turn on or connect your IColor printer to the computer until the install program asks you to do so.** Doing so can cause errors during installation.
2. Locate the installation file on the USB drive that was shipped with your printer and double click to launch the setup program.



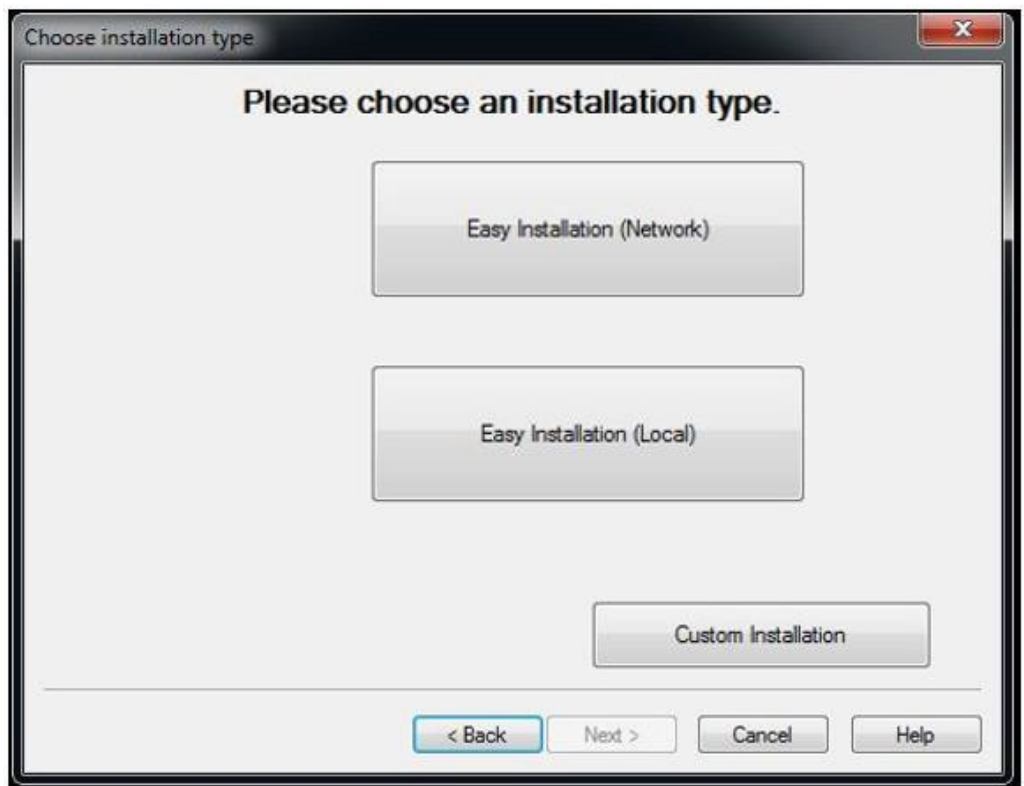
3. Click continue to install the IColor 600 driver.



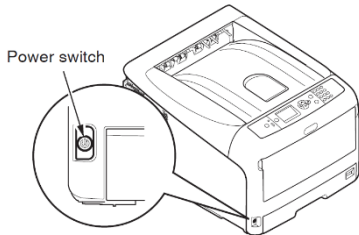
4. Agree to the terms of the Software License Agreement, then click next to start the driver installation wizard.



5. Chose 'Easy Installation (Local)' for USB Setup.



6. Once the following screen has been reached, it is now safe to connect the printer and computer via USB and power on the printer. The power switch is located on the front lower left of the printer. Press and hold for 1 second.



7. Click finish to complete the installation, or simply allow the screen to close automatically.



Network Setup:

1. Unpack the printer according to the Set-up Guide. Connect the printer to your network via CAT 5 cable and power on the printer. Your network will automatically assign an IP address to the printer, but it is suggested that you program a static IP address to the printer to avoid possible reassignment of the IP address should the machine be powered off. To set a static IP address: Press the 'Menu' button on the control panel of the printer. Select 'Admin Setup'. Password is 'aaaaaa' (6 lowercase a's). Select 'Network Setup > IP Address Set to 'Manual'. Press the 'back' button once on the control panel, and select 'IPv4 Address'. Set the desired IP address, then press the 'back' button on the control panel until you reach the home screen.
2. Locate the installation file on the USB drive that was shipped with your printer and double click to launch the setup program.



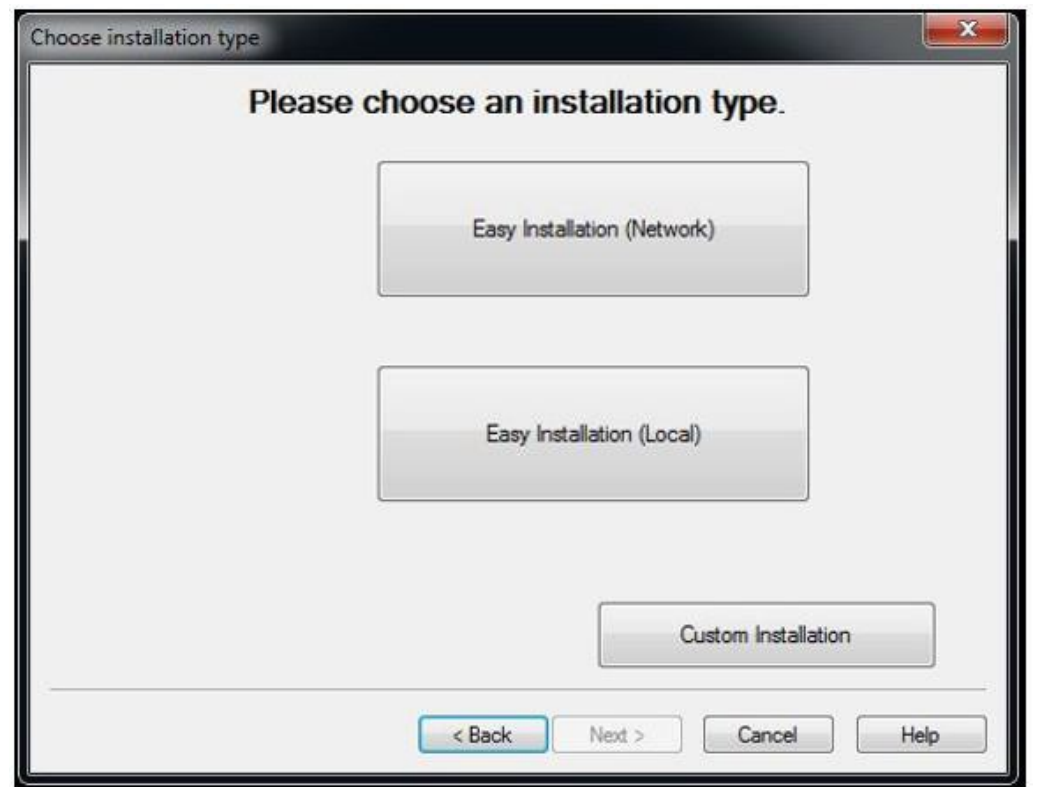
3. Click continue to install the iColor 600 driver.



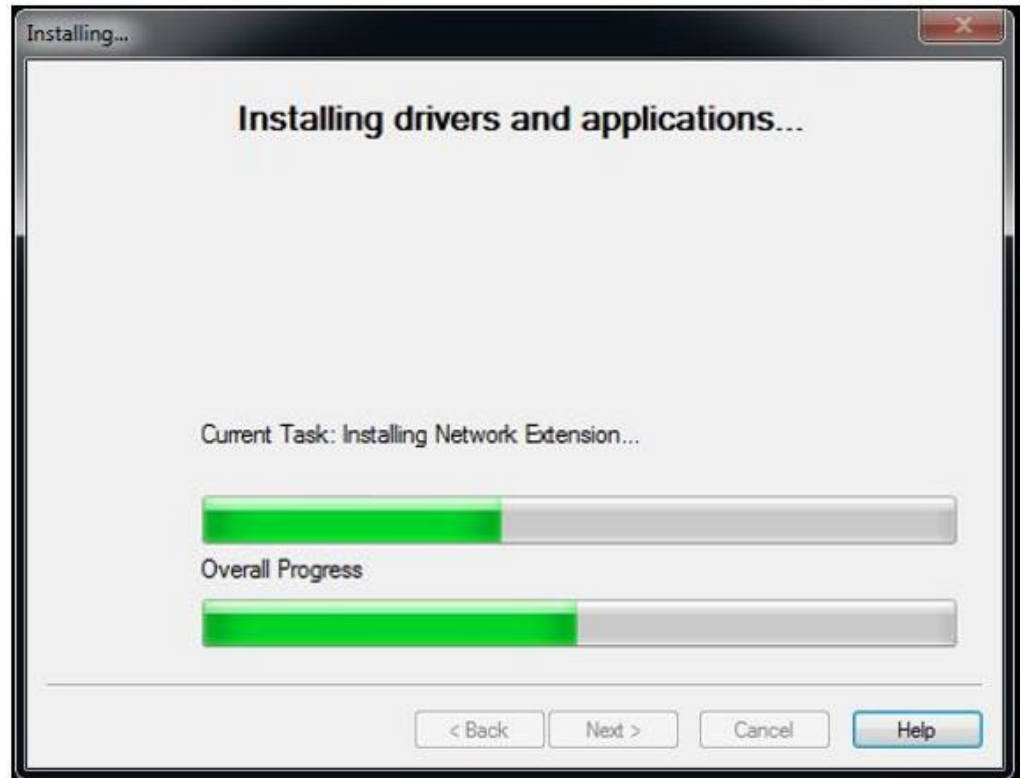
4. Agree to the terms of the Software License Agreement, then click next to start the driver installation wizard.



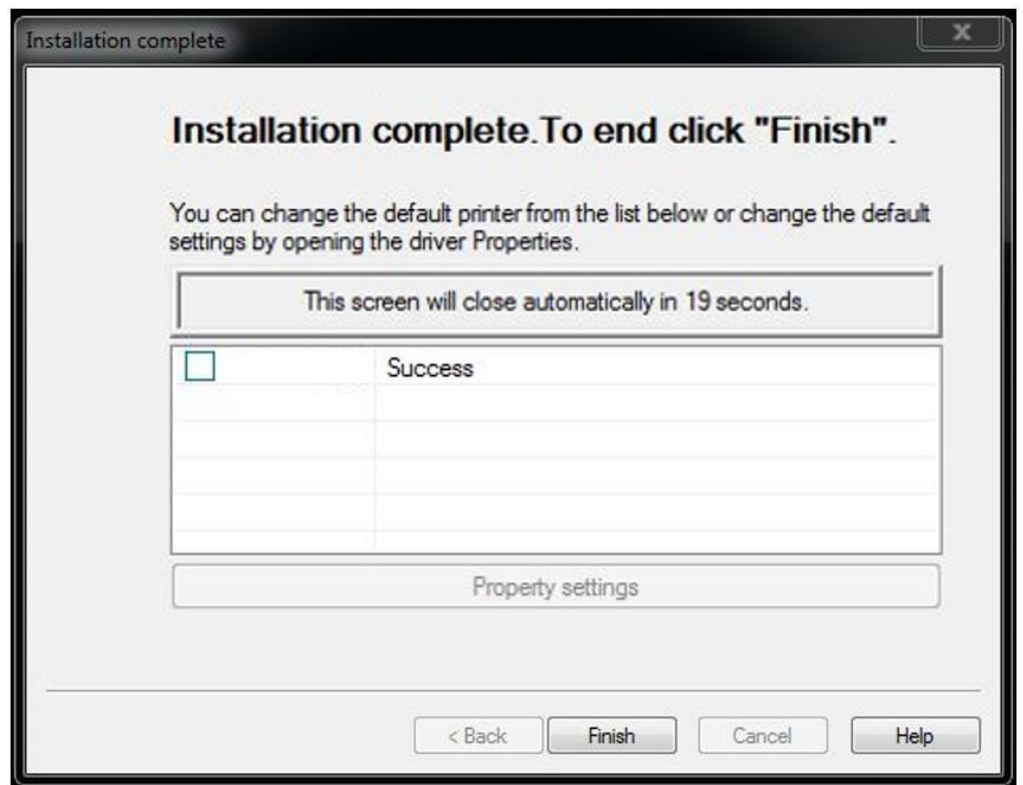
5. Chose 'Easy Installation (Network)' for Network Setup.



6. The software will search and detect the printer on your network (identified as C831). Highlight the printer, click next, and the software will be installed.



7. Click 'finish' to complete the installation, or simply allow the screen to close automatically.



8. Your printer will now be listed along with your other printers and devices.



9. You are now ready to install the IColor ProRIP software. Installation software and instructions would be on the ProRIP USB Dongle that came with your printer.

IColor ProRIP Software Introduction



Use the IColor ProRIP software to print white as an overprint in one pass. This professional version is designed for higher volume printing with an all new interface. Design files can be printed directly from your favorite graphics program, as well as imported directly into IColor ProRIP.

The IColor ProRIP software allows the user to control the spot white channel feature, as well as spot color overprinting, where white is needed as a top color for textiles. No need to create additional graphics with different color configurations – the software does it all – and in one pass. Enhance the brilliance of any graphic with white behind color.

Print and Transfer onto:

Natural and synthetic fabric (Light and Dark)
Mugs and ceramics
Light, dark and clear labels
Leather
Light and dark paper stock
Glass
Acrylic
Wood
Metal
Window Cling
Banners
And much more!

Create unique items – The possibilities are endless!

T-shirts and sweatshirts
Aprons
Corporate logo shirts
Mouse pads
Sports apparel
Jackets
Tote bags
Tattoos
And much more!

The most important point of the IColor ProRIP software is that it allows colors to be put down in layers. Regular printer drivers only concern themselves with what the eye sees on the top layer, the RIP allows you to separately control each layer, thus giving you the ability to control not only what you see, but what is behind that top layer (typically the white layer). The IColor ProRIP gives you the unique ability to use one machine to print images with white as an underprint or an overprint. You can now print vibrant colors on clear or dark media regardless of the background to which it is applied, where the white is put down first and the colors afterwards.

The IColor ProRIP 'Color Mapping' feature also allows for reverse printing when printing and transferring to garments where white is put down last. This is the only way to achieve white underprint and overprint in one pass, and you will not find another software/printer package on the market today that can do all of this. The software also allows for color manipulation and removal, rasterization, cost calculation, professional layout tools and direct printing from your favorite graphics program. It ships standard with all IColor Printers

To accomplish these two features, UNINET has created three configurations referred to as 'Print Queues' to suit any printing project:

**Standard CMYK
Printing**



**Spot Color
Overprinting**



**Spot Color
Underprinting**




The **CMYK Queue** is for standard print jobs that do not require a spot color. This queue assumes that the media being printed on is white. Use this Queue for printing on banner media, window cling, Presto! Media and for Dye Sublimation prints. Note that for Dye Sublimation, there is an ICC Profile that is available when this is selected.


The **Overprint Queue** is for printing white as an overprint in one pass for reverse printing (typically used for transfer printing). For this configuration, the white cartridge is placed in the first slot of the IColor 600 printer and the cyan cartridge is placed in the last slot of the printer. This configuration is for textile and hard surface transfer printing, where white is needed as an overprint, applied on top of all the other colors. When the image is pressed to the garment, the transfer sheet is flipped over and the white becomes the underprint. This is especially important where images have half tones and 100% transfer of the image can be problematic, or when there is white in the image that needs to show through on dark colored garments.

The **Underprint Queue** is for right side printing and allows for printing white as an underprint in one pass (typically used for transparencies, clear labels, dark media or UNINET Aqua Clear paper). When the white is installed in the last slot of the IColor 600 printer, this is configured for 'Right Side Printing' where the white is printed first, as an underprint, all in one pass. In this situation, the RIP converts pure K colors to CMY composite black, and puts in white, not only as a background color, but also in the image where white or page white is specified.

White toner performs the following functions:

- 1) To produce the color white on a dark garment.
- 2) To fill in the halftones on lighter images so that there is enough toner on the page to fully transfer to your garment or to pull all the B adhesive.

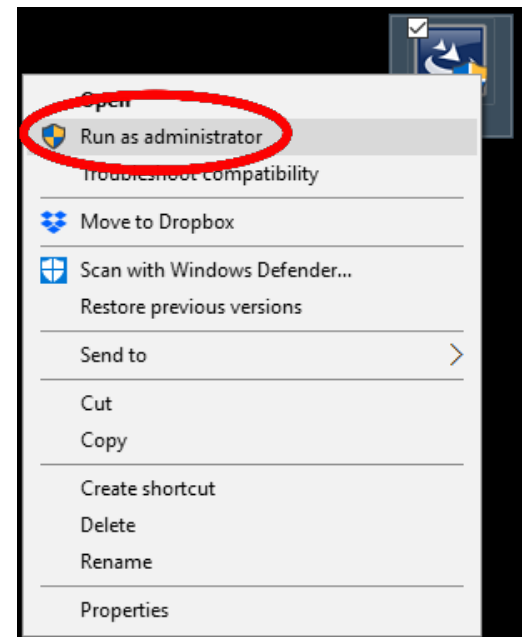
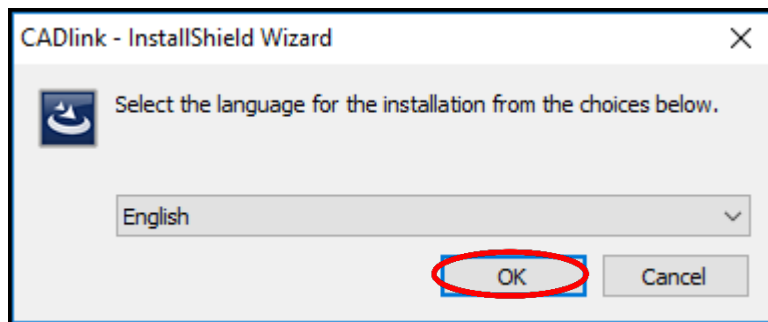
 This second point is the most important one and the reason why you cannot simply use a CMYK printer for transfer printing. Also, this is why you **MUST** use the color white all the time (assuming your image has some halftones in it). Even when printing on a white garment and there is no white at all in your artwork. This is the biggest misconception with new users.

 Don't make that mistake, always use the white toner cartridge for any type of transfer printing!

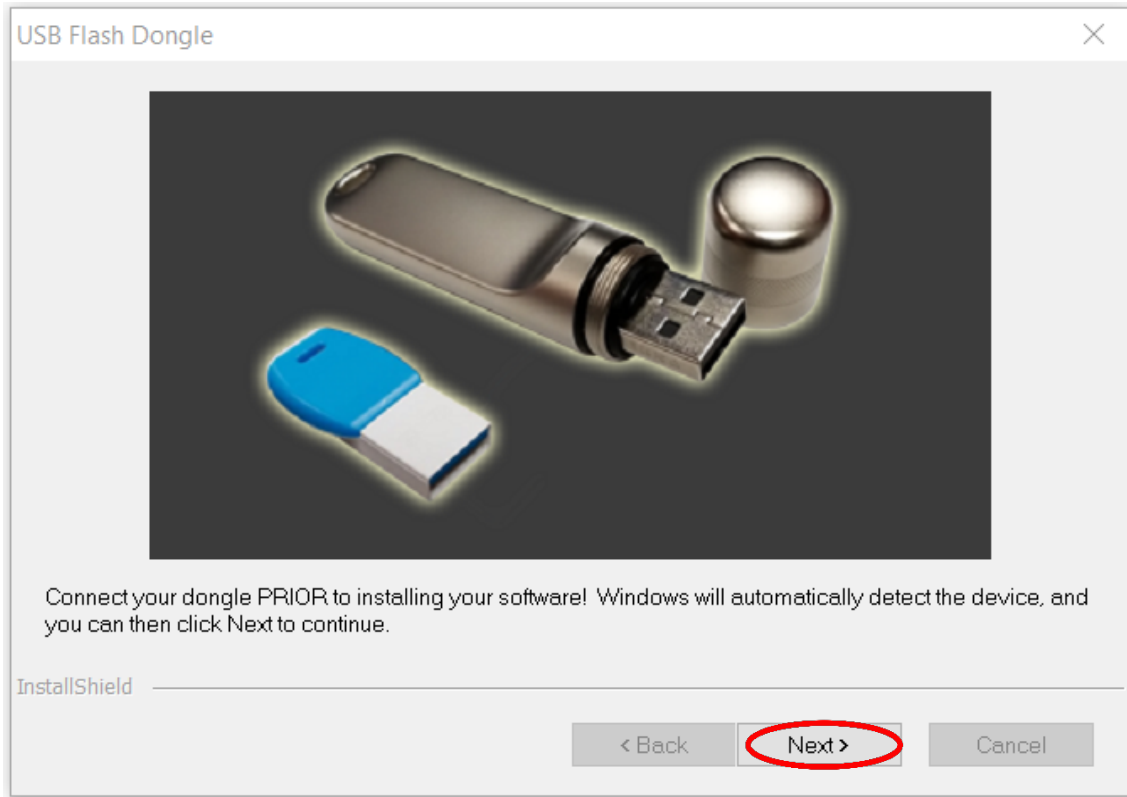
IColor ProRIP Software Installation

- Make sure all other programs are closed and virus software is uninstalled.
 - ⚠ Failure to uninstall virus software can lead to problems with installation and/or use of software.
 - ⚠ If you keep the virus scan software active after installation, you must add the ProRIP to the 'safe programs' list or issues with ProRIP software can result. Windows Defender is the only program which, to date, has not affected the functionality of the ProRIP.
- Plug in the included dongle into a free USB port on your PC. This dongle contains all of the software, manuals and documents for your printer and software and also serves as your license key.
- Navigate to the RIP setup folder on the dongle and right click the setup file and select 'Run as Administrator'.
- Run the Installation and follow the steps pictured below.
- NOTE: It is suggested to copy all of the installation files located on the USB drive to a folder on your computer for safe keeping and ease of installation.
- The IColor ProRIP dongle must be inserted at all times when installing or running the program.

- 1) Navigate to the RIP setup folder on the ProRIP dongle or on your PC if you've copied these files. Right click on the setup application file and 'Run as administrator'.
- 2) Select the language for installation and click 'OK'.

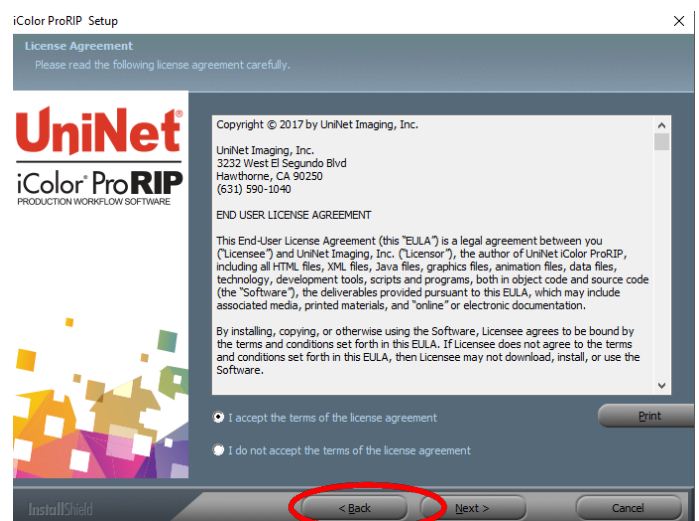
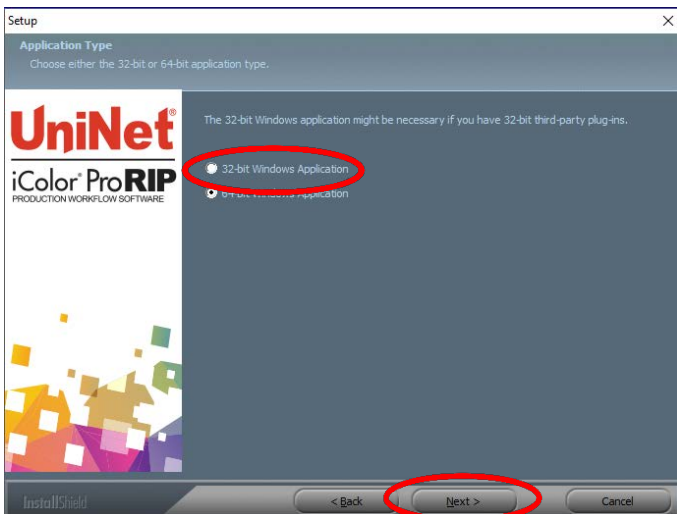


- 3) You will be prompted to insert the USB dongle before proceeding with the installation. If already inserted, click 'Next'. (There is only one dongle shipped with your system, and can look like either of the types represented below).

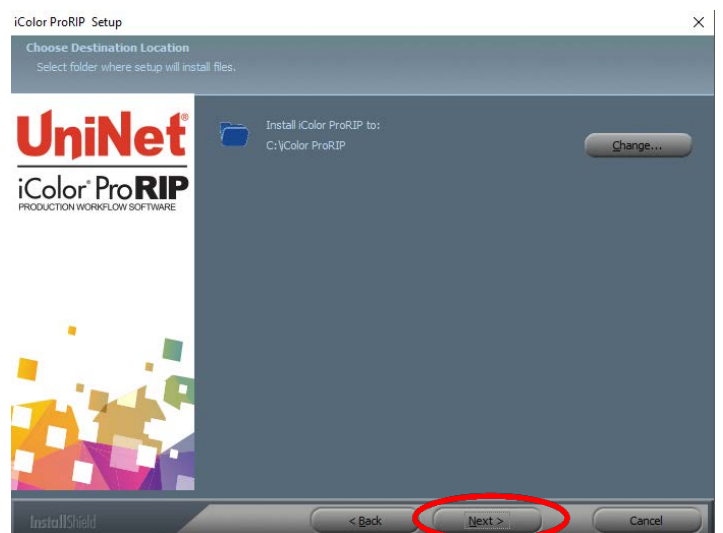
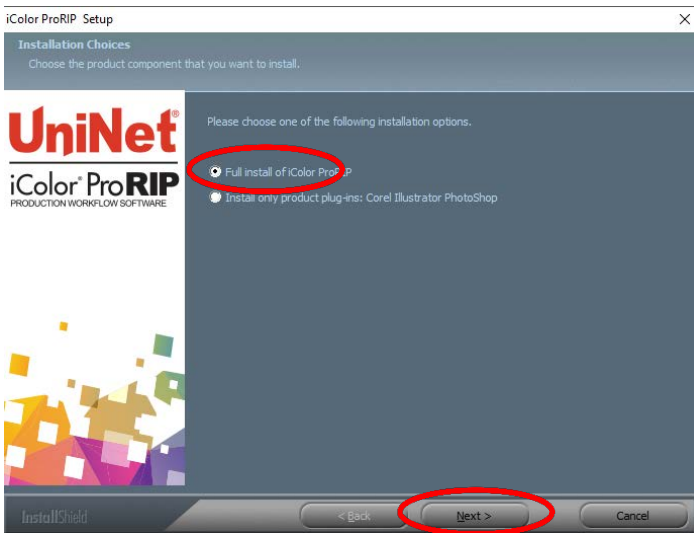


IMPORTANT: This USB dongle is your license key. Ensure that it is not lost or broken, as UNINET cannot replace it without a charge. You cannot use the software without it installed in your PC.

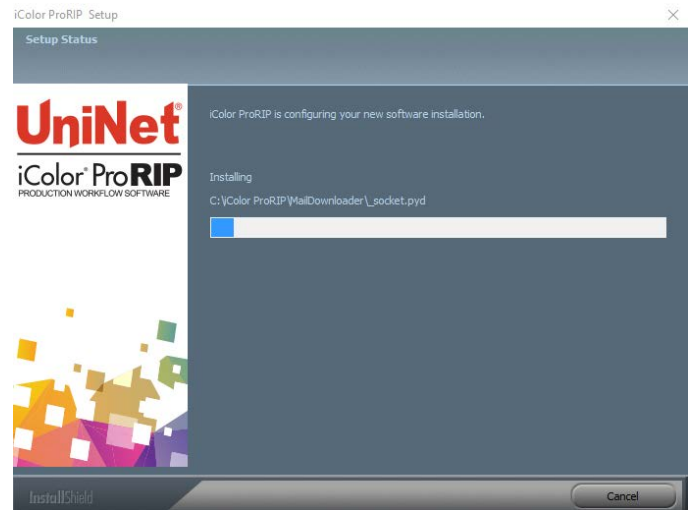
- 4) Select either the 32 or 64 bit application (dependent upon your version of windows). Accept the terms of the license agreement and click 'Next'.



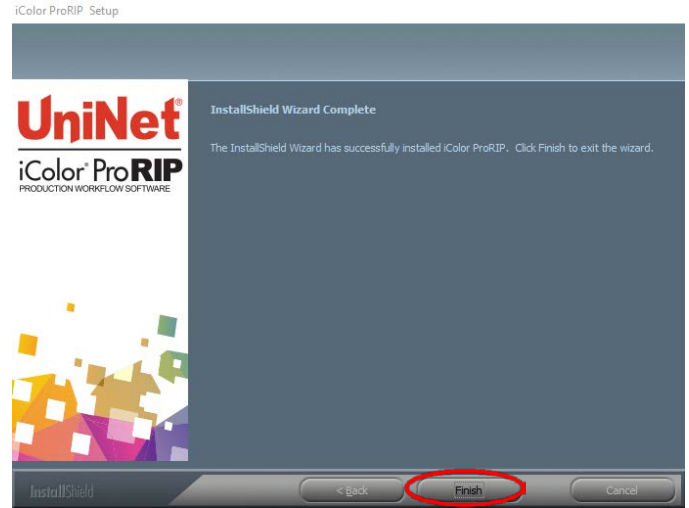
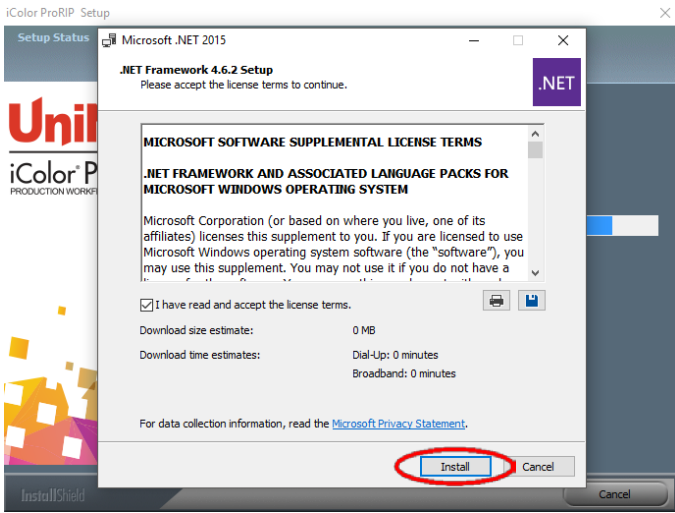
5) Choose 'Full install of IColor ProRIP' and click 'Next'. Click 'Next' again to accept the installation folder.



6) Click 'Next' to allow the creating of the IColor ProRIP Program Folder and the installation will begin.

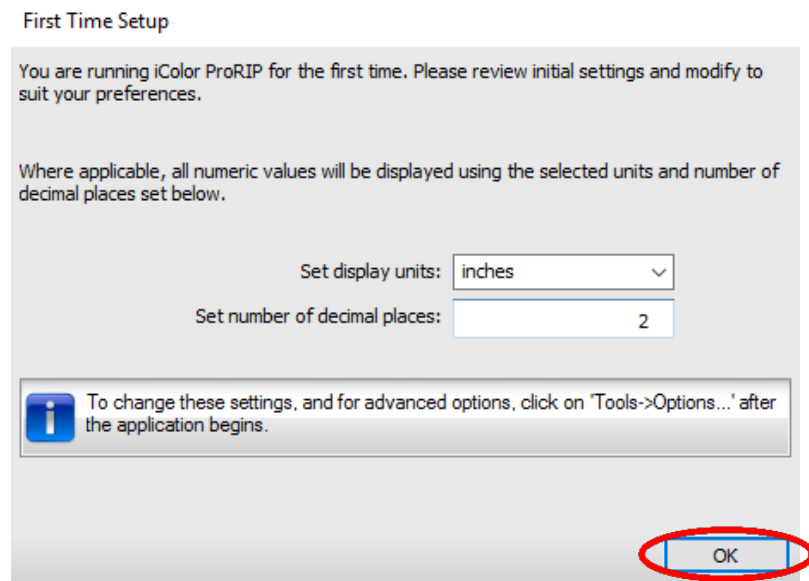
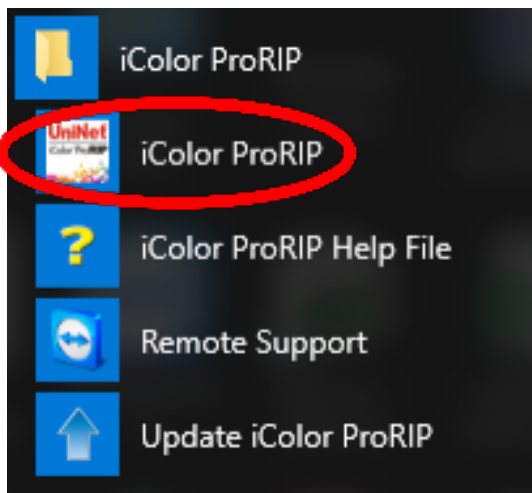


- 7) If not already installed, you will be prompted to install .NET Framework, which is a necessary component to the ProRIP software. Accept the license terms and click 'Install'. Once the InstallShield Wizard is complete, click 'Finish'. This installation normally takes several minutes to complete.

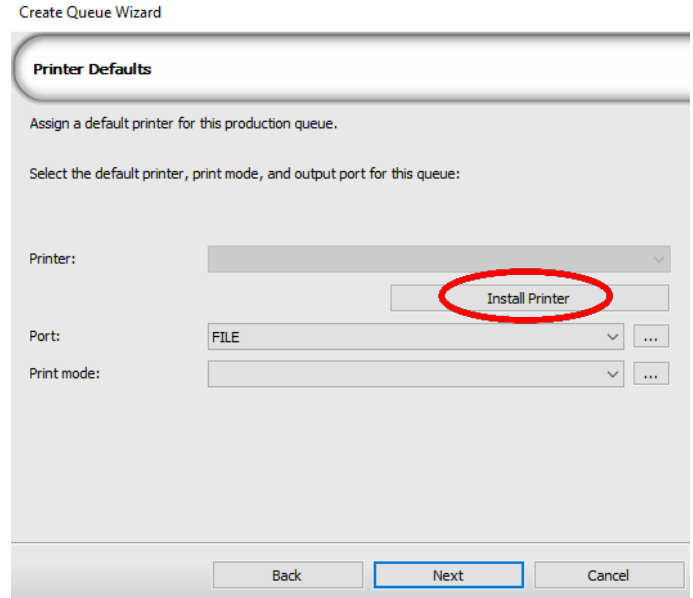
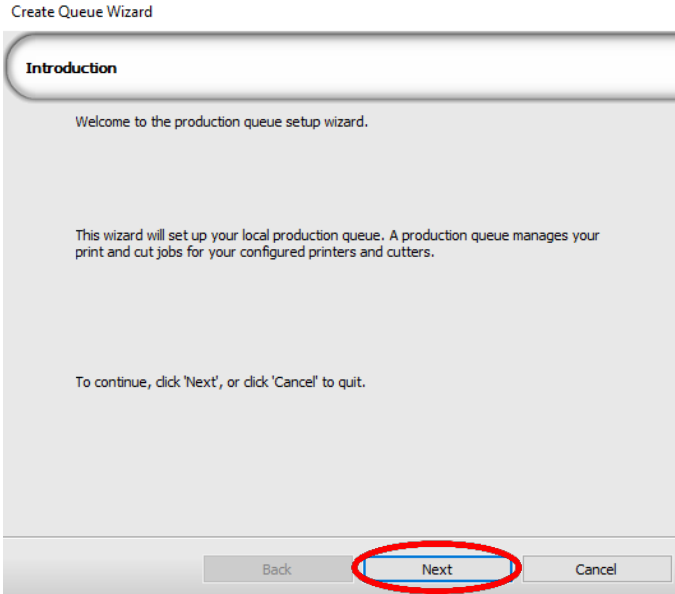


ProRIP First Time Setup

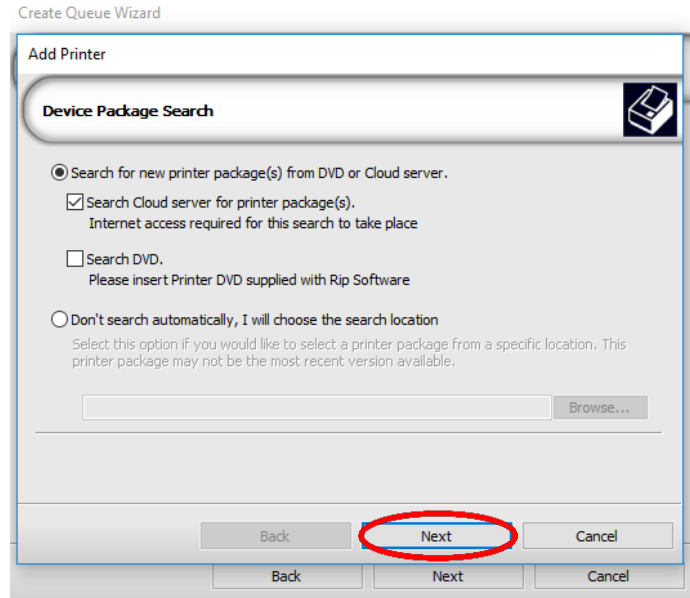
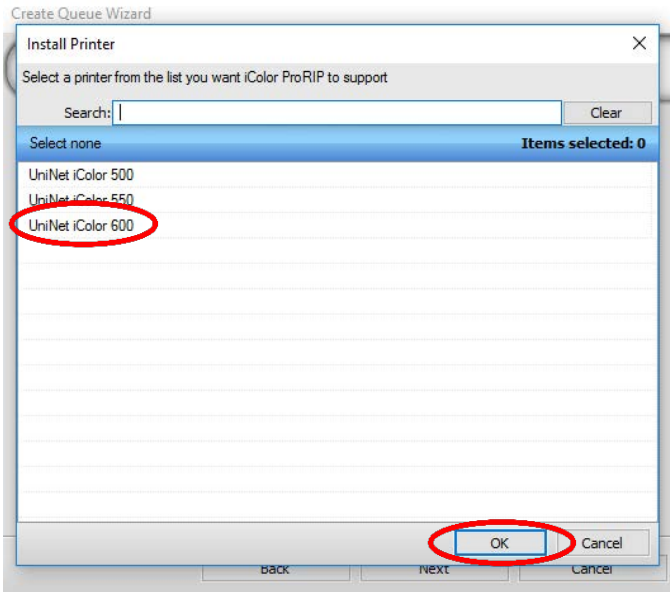
- 1) Be sure the IColor ProRIP dongle is installed and you are connected to the internet. From the Windows Start menu, choose **All Programs >> IColor ProRIP** or double click on the desktop icon that was created upon installation. Launch the program. Create a shortcut if desired for quicker access later. Confirm first time setup by setting your preferred unit of measure and decimal places. This can be changed later under **Tools >> Options**.



- 2) Once the ProRIP opens, the Queue Wizard will begin the installation of the support files for your IColor printer. Click 'Next' and then 'Install Printer'.



- 3) Select the appropriate printer from the support menu. Click 'OK'. Then click 'Next' to continue the installation. Note that you may have already installed the printer driver in windows. This installation is for RIP functionality only.



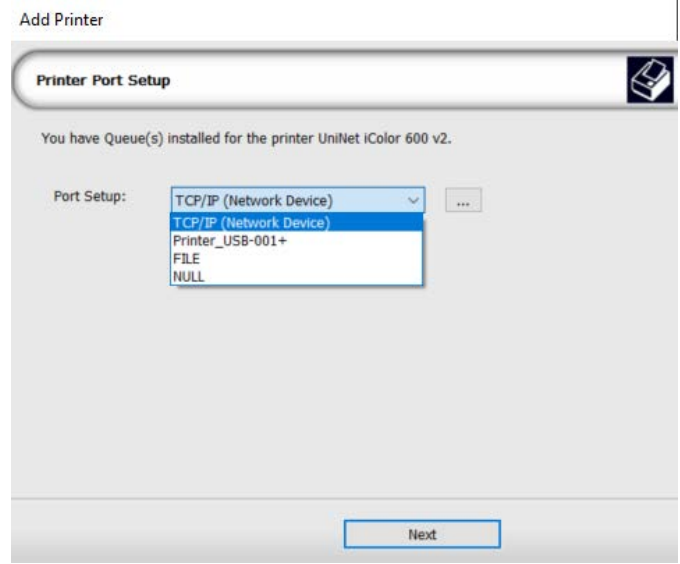
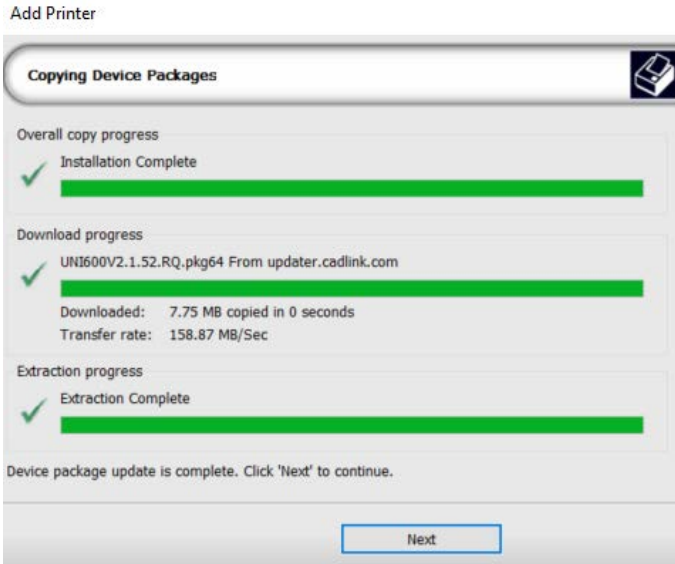
4) Click the 'Port Setup' dropdown and select how your printer is connect (Network or USB).

⚠️ You must complete this step or you will not be able to print.

5) If connected via network (recommended), choose TCP/IP. If connected by USB, choose the printer as identified in the drop down.

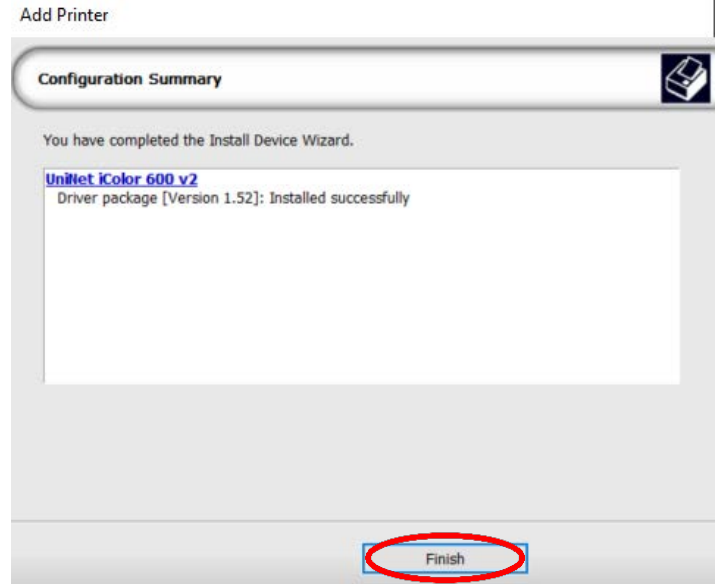
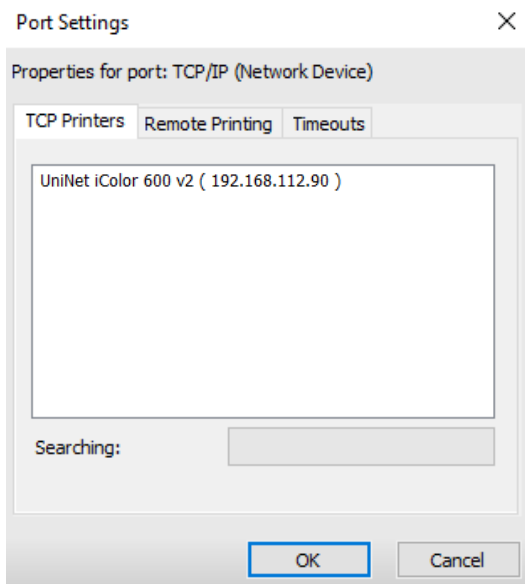
⚠️ For USB connections, do not choose the port 'Printer_USB-001+'. The proper port will also have the printer name in the description.

⚠️ All other ports will update automatically, it is only necessary to do this for one queue.



6) If connected via network, once TCP/IP is selected, the software will poll your network for available printers. Select the proper IColor printer. Note that the IP address of the printer is displayed.

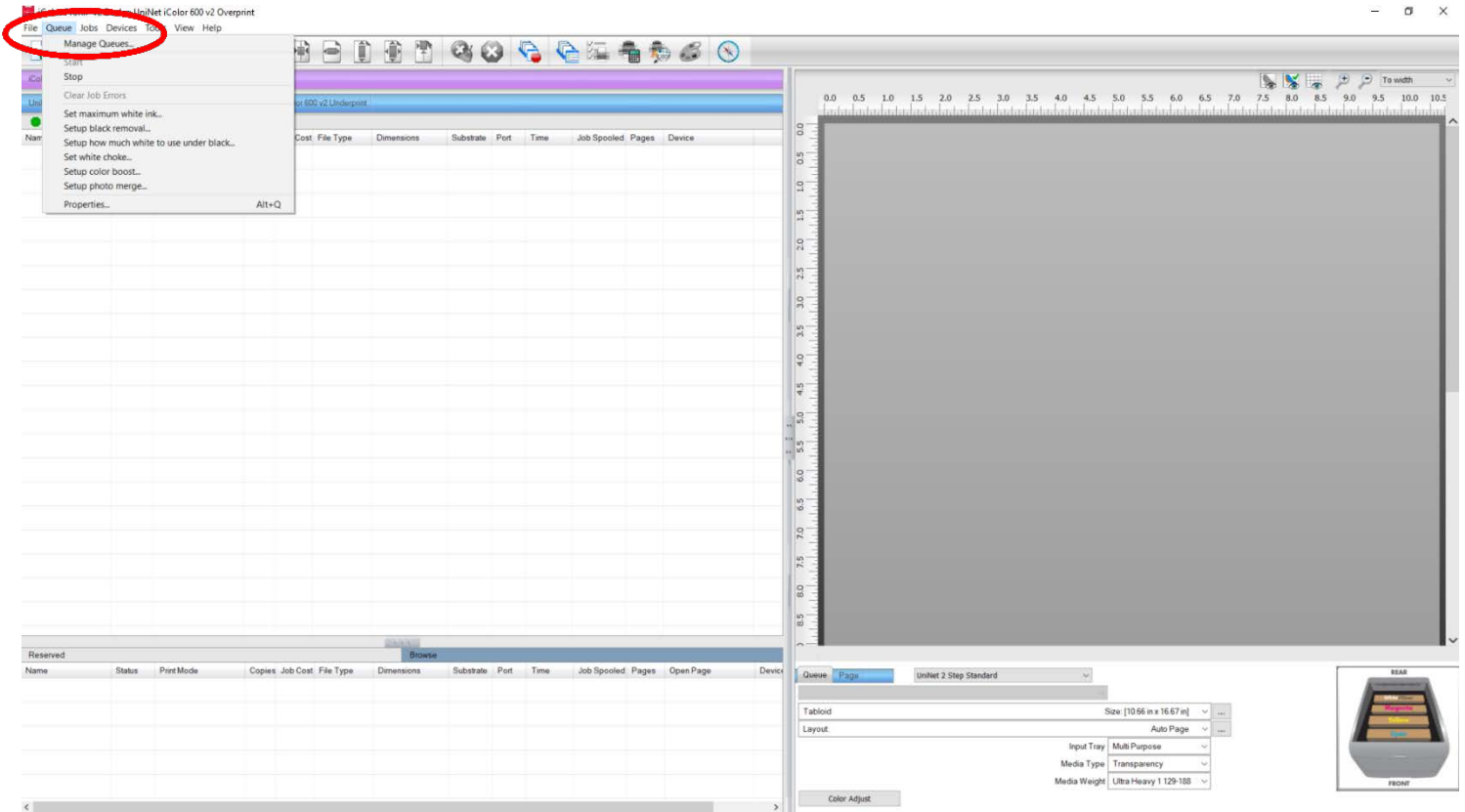
⚠️ Be sure to set a static IP address for your printer so that the IP address does not change later. If this happens, you will have to repeat this step.



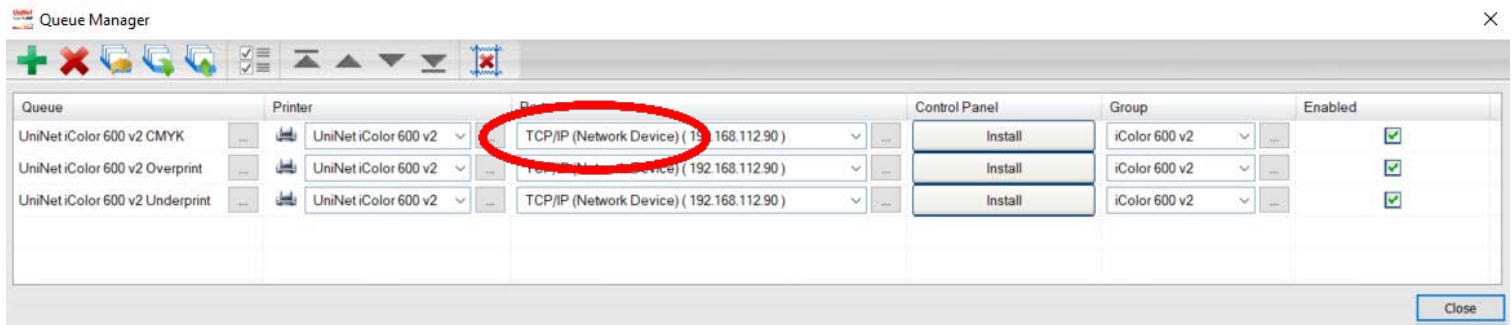
7) If you need to change or reset the ports in the future:

Click **Queue >> Manage Queues** to view, update or change the port settings.

⚠ Port settings will reset when the queues are updated so you will have to do this from time to time.

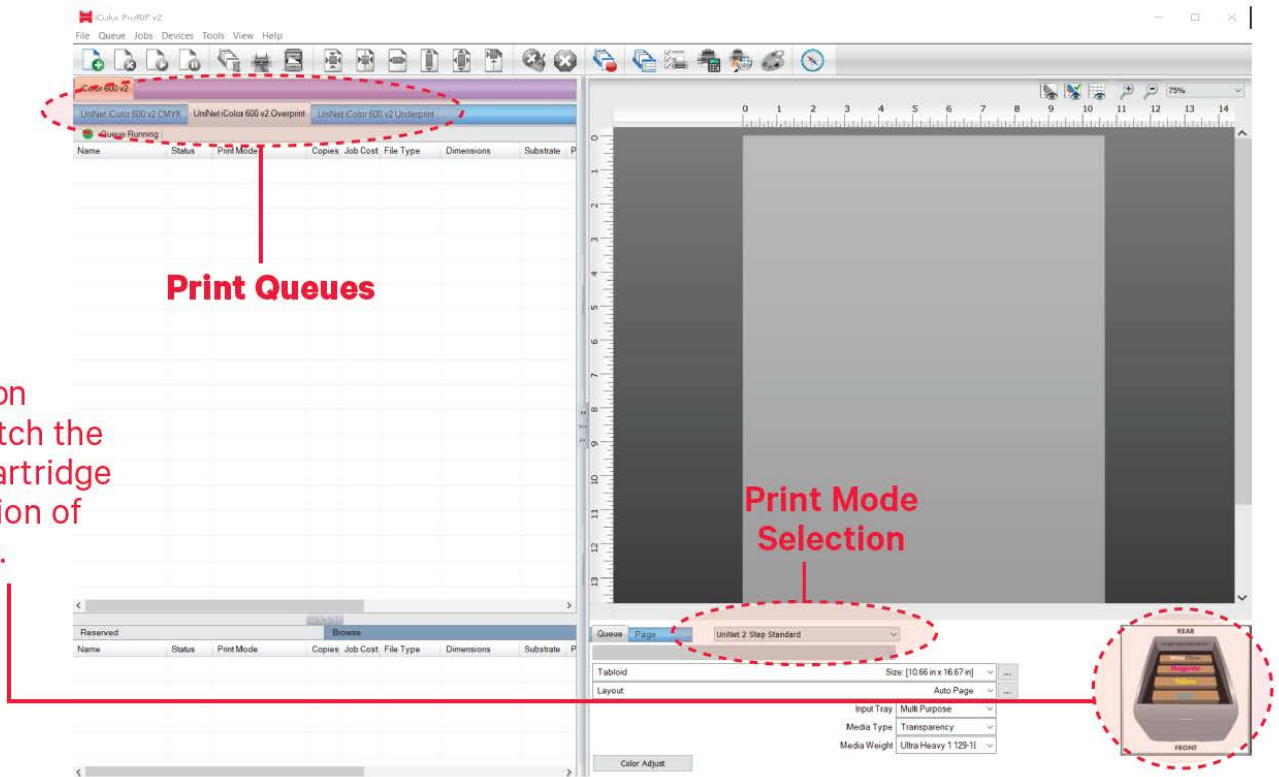


8) In the 'Port' drop down menu, choose the proper port. If connected via network (recommended), choose TCP/IP. If connected by USB, choose the printer as identified in the drop down. All other ports will update automatically, it is only necessary to do this for one queue.

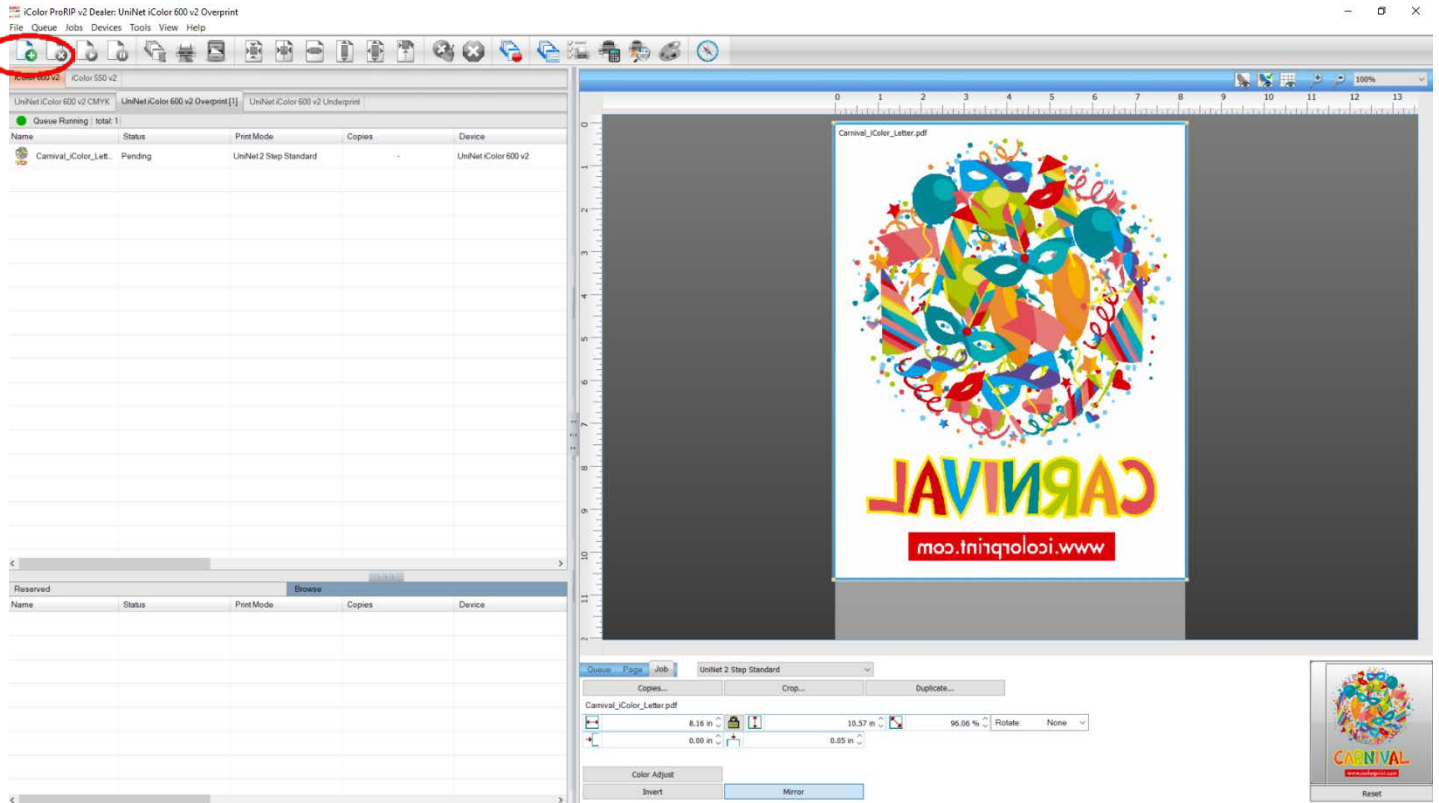


- 9) If connected via network, once TCP/IP is selected, the software will poll your network for available printers. Select the proper IColor printer. Note that the IP address of the printer is displayed. Be sure to set a static IP address for your printer so that the IP address does not change later. If this happens, you will have to repeat this step.
- 10) In order to print, select the proper Print Queue for your project. Then, select the Print Mode (otherwise known as media type) and verify the size of that media before importing your graphic.

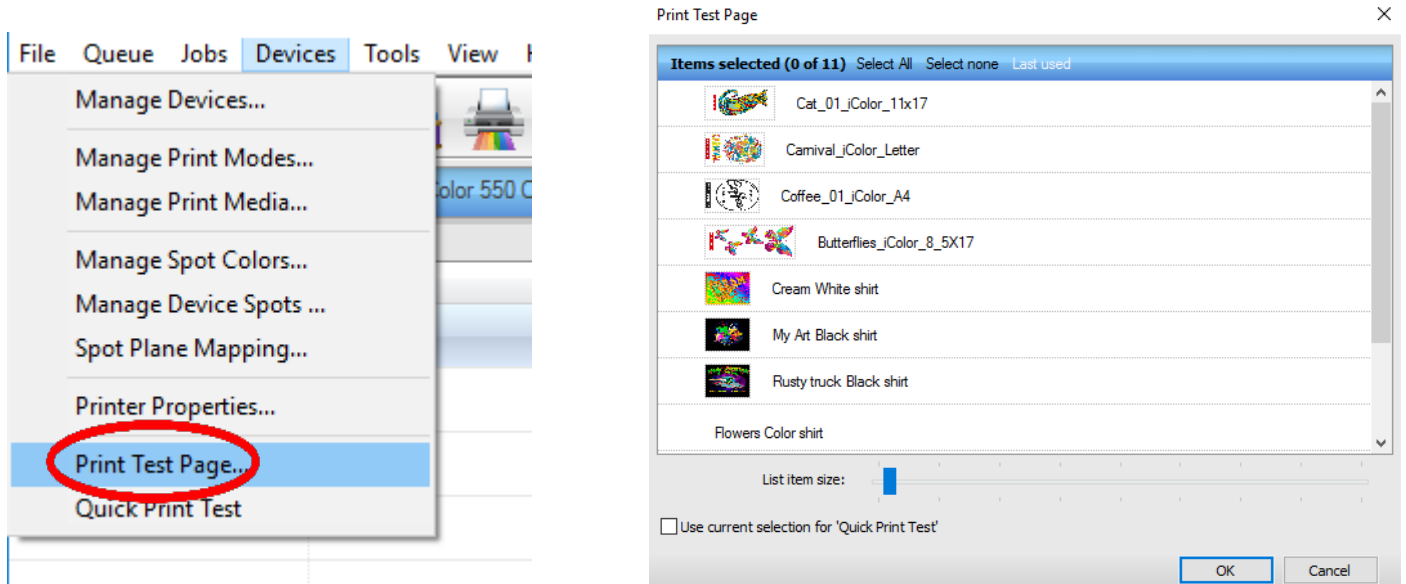
Note:
Preview icon
should match the
physical cartridge
configuration of
the printer.



- 11) Import the desired graphic by clicking the 'green plus' icon and navigating to the proper folder. You can also import by clicking **File > Import File**, or simply dragging and dropping your file into the queue.



- 12) There are preloaded images that can be used to print a test page. Click **Devices >> Print Test Page** to see the choices. It is suggested that you print a test page upon completion of the setup to confirm the printer has been properly installed. Use [Shift] and [Ctrl] to select multiple pages, and then click OK. More about the uses of each page can be found in the Help Topics file within the ProRIP program as well as the ProRIP User Manual.



Using the ProRIP Software (Summary)

Once your image is loaded, take note of the preconfigured settings relating to the media being used in the printer.

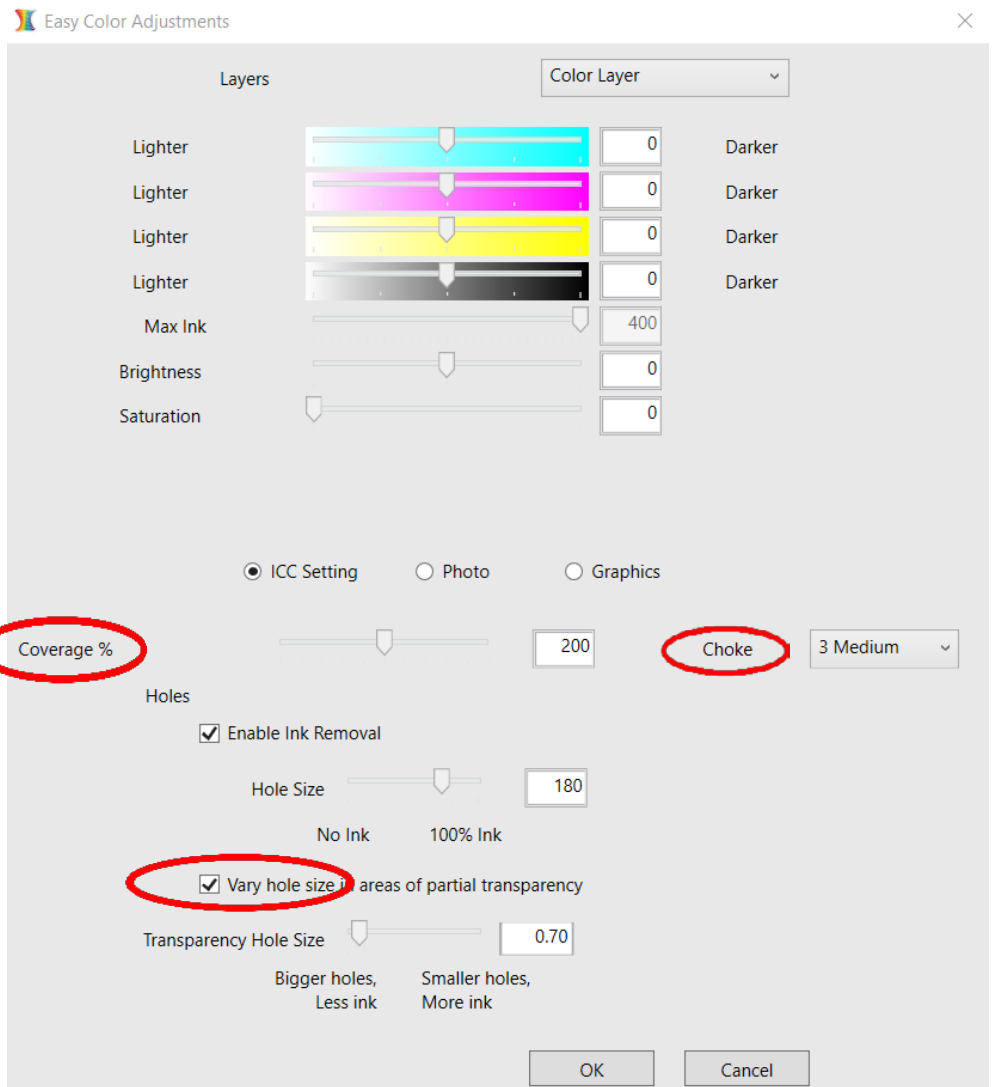
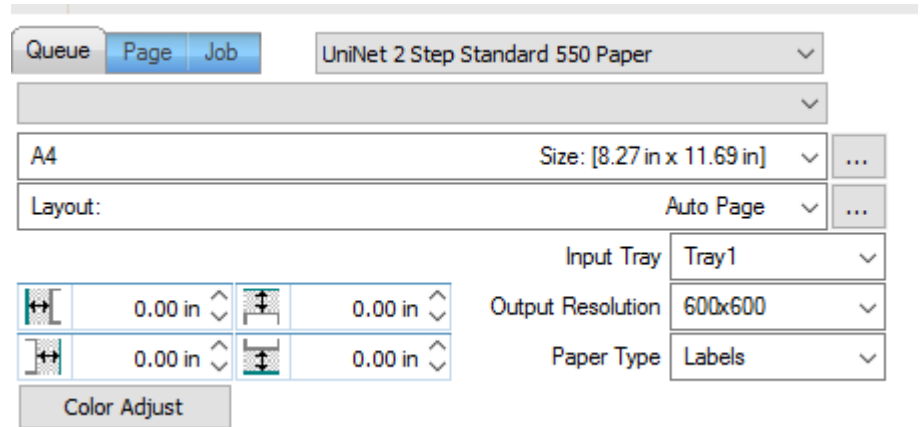
The 'Queue' tab shows the size of the media that will be used, where to load the media into the printer and the paper type setting recommended.

Each media type will contain this preconfigured data to make your printing experience as easy as possible. Overriding these settings could result in undesirable results.

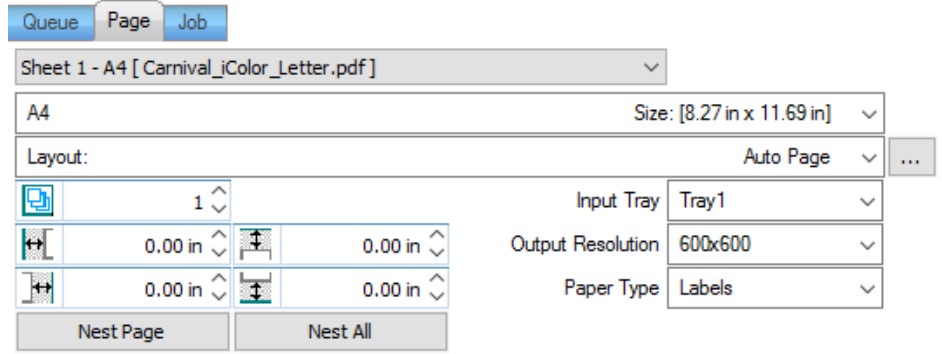
To alter the color settings, click on 'Color Adjust' and adjust as needed. 'Coverage %' represents the amount of white/clear toner overprint or underprint (depending on which queue is being used).

The 'Vary hole size in areas of transparency' option allows for rasterization of colors that fade into nothing and to retain partial transparency. It is suggested that this option is left on, as it will only apply itself where it's needed.

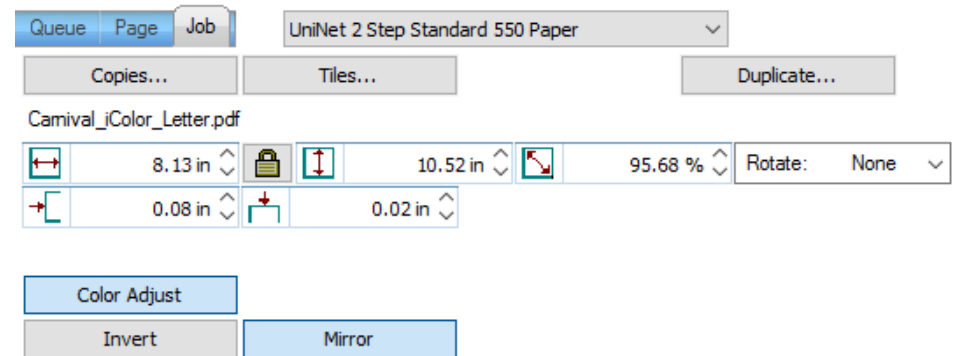
'Choke' dictates how much the overprint white layer is pulled in under the colors. The higher the number, to more it's pulled in (to avoid a white outline around your graphic).



The 'Page' tab offers the ability to print multiple copies and nest images. You can also adjust the size of the image to fit your media here (and in the Queue tab).

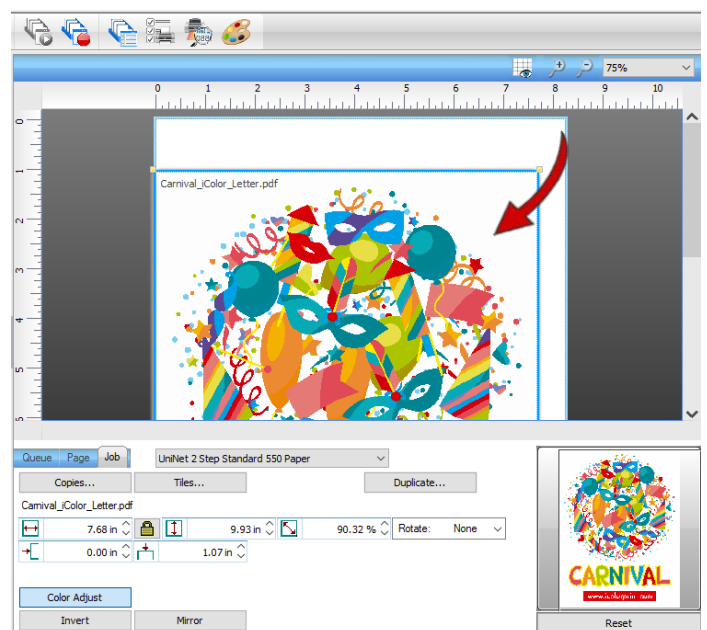
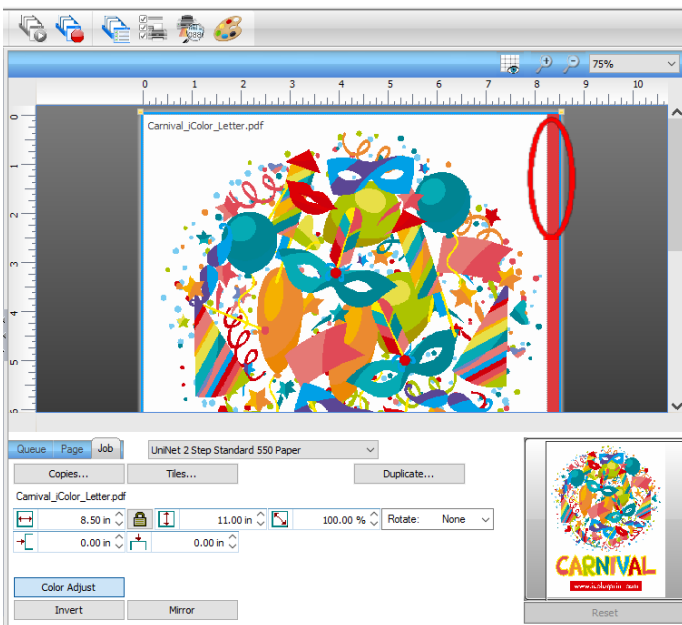


The 'Job' tab allows you to lock the proportions of your image to maintain the aspect ratio. Here you can also mirror, rotate and invert the image, as well as adjust the margins of the print if necessary.

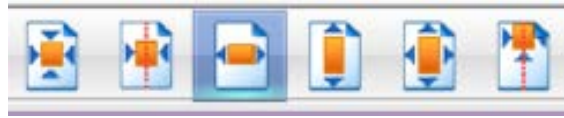


Note that the mirror function is automatically on for any image loaded into the overprint queue.

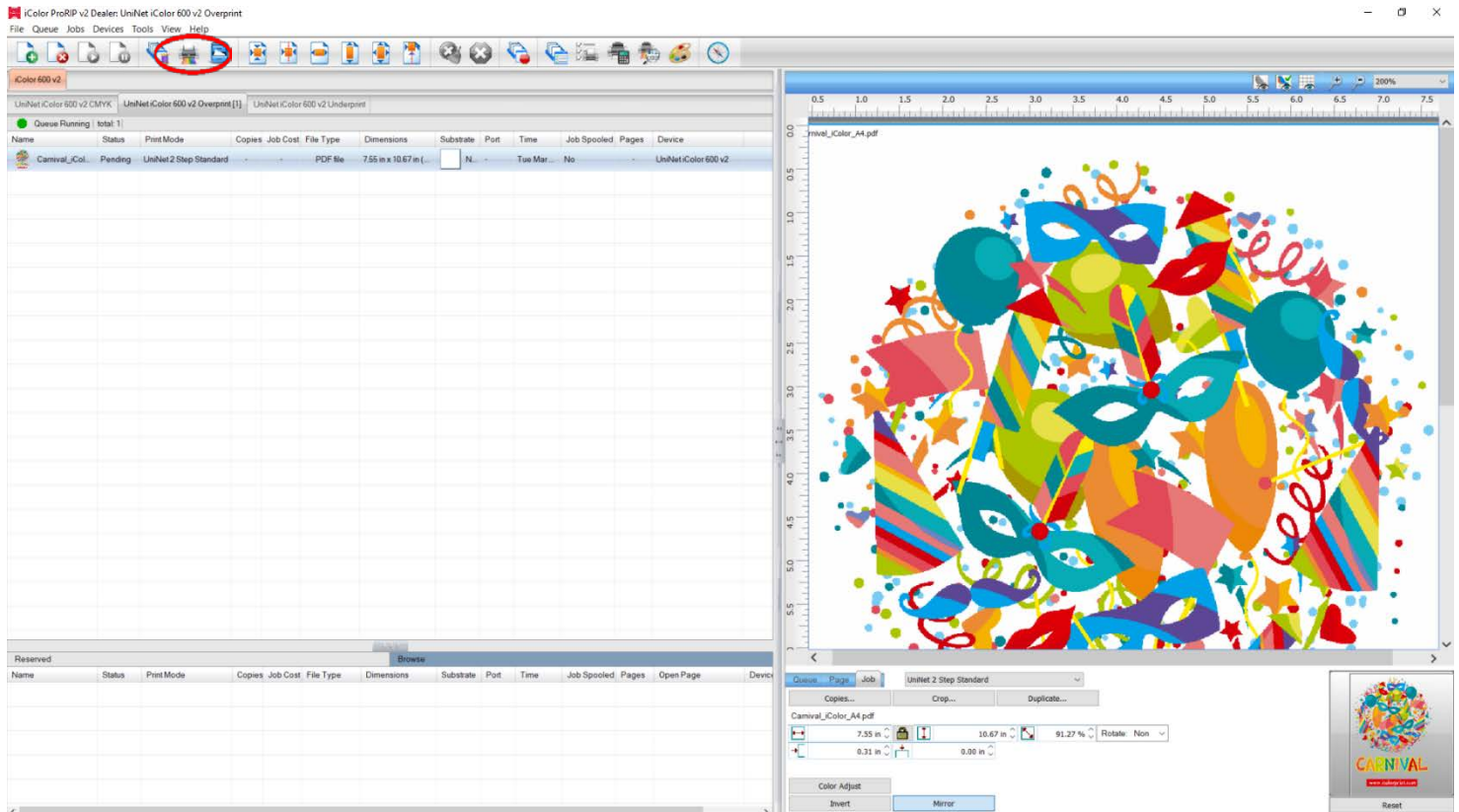
- You can also adjust the size of any image by dragging and dropping the corner of the image in the preview pane.
- In this example, where we have a letter sized image placed on an A4 artboard, the red bar to the right of the image represents the portion of image that is outside the print margins. Be sure to resize to eliminate this bar before printing.



Adjustments can also be made by using these icons at the top of the screen.



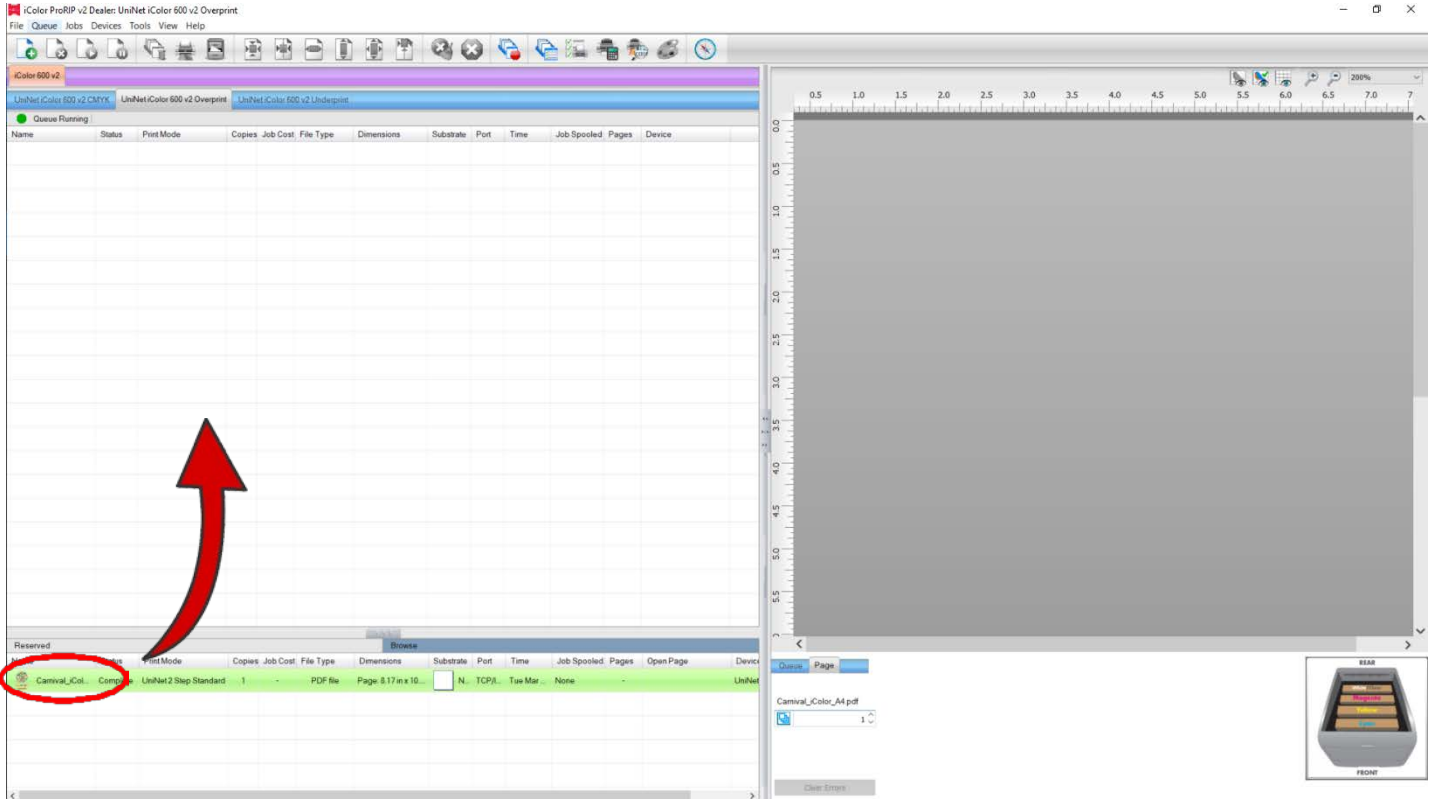
When ready, click the 'Print' icon to print your graphic.



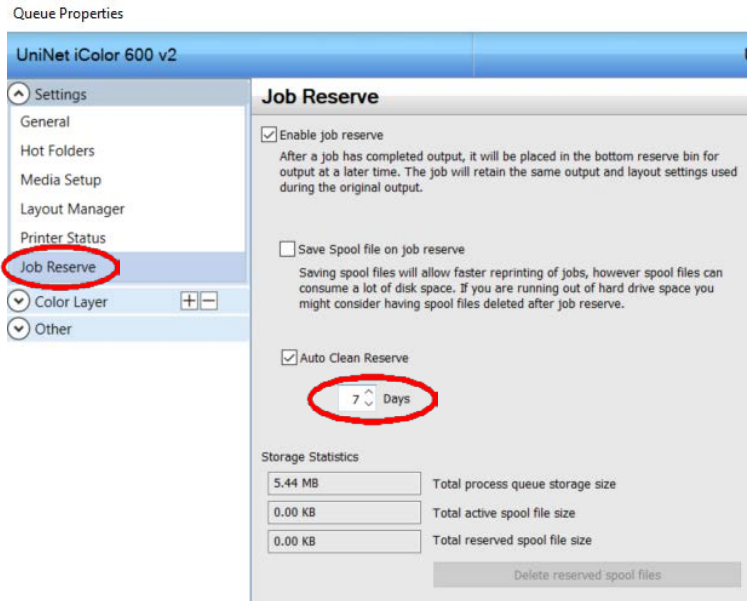
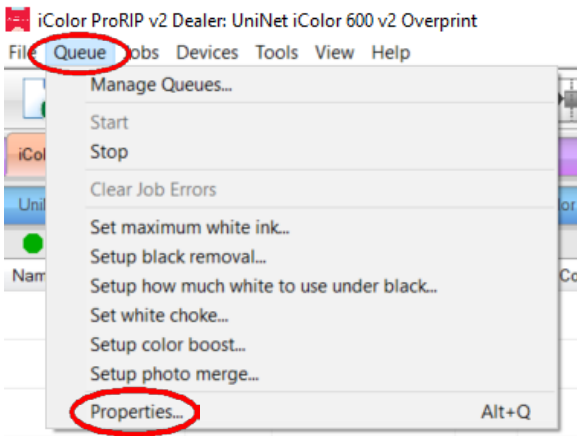
⚠ If you encounter any of these issues when printing from the RIP, please refer page 24, step 7 to set the proper port in Queue Manager.

- Port Failed to open
- Holding
- Prompt to save rather than print

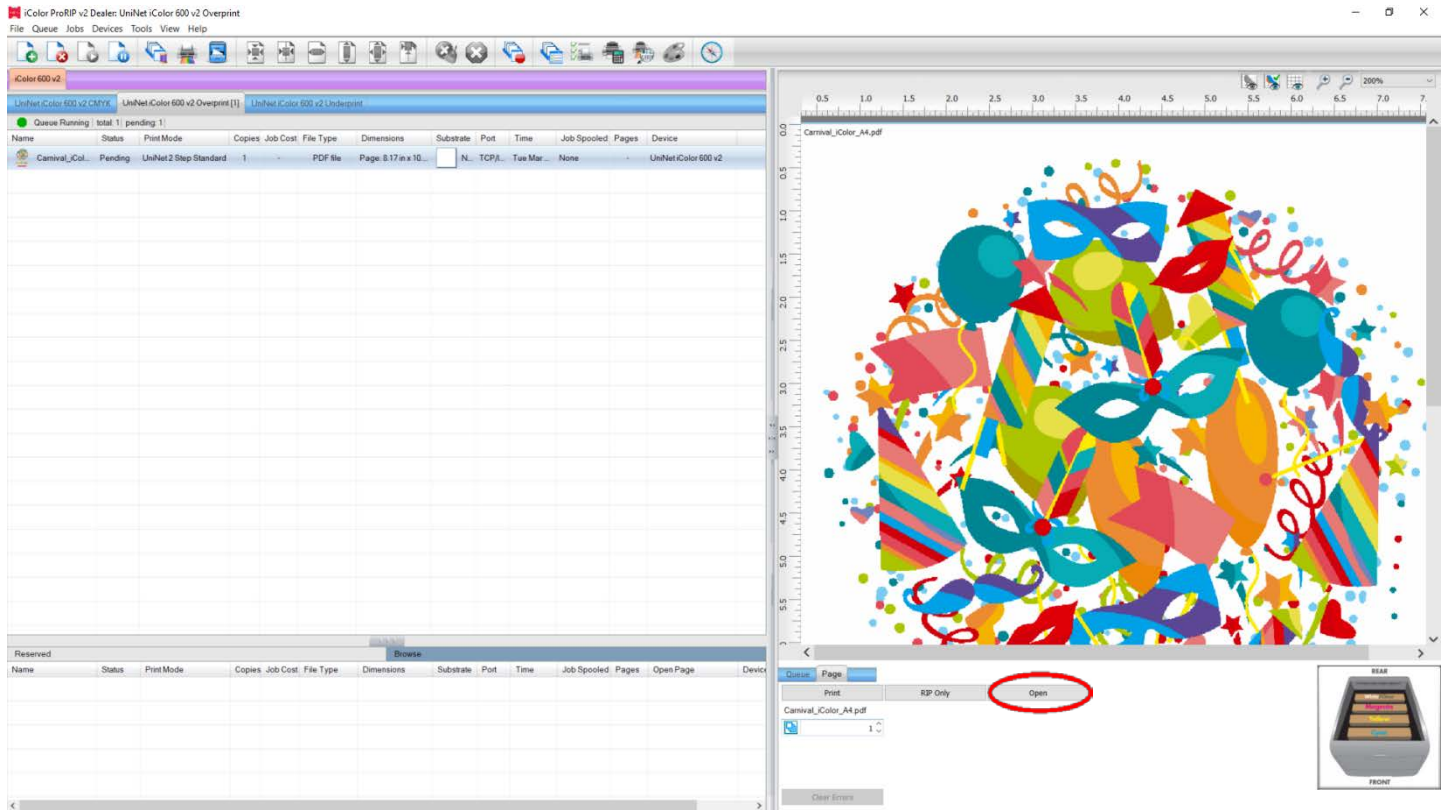
Once the print has completed, the job will be archived in the reserved area for 7 days. If you wish to reprint that job, drag and drop the job from the reserved section into the proper queue.



To lengthen the amount of time a job stays in reserve, click **Queue>>Properties**. Then click 'Job Reserve' and set the 'Auto Clean Reserve' time frame. Uncheck to keep jobs in reserve forever.



After a particular job has printed, it will be 'closed'. This means that it was rendered by the software so that the next time you print, the processing time will be minimal. If you need to make any changes to the print job before printing, you must 'open' the job. Otherwise, just reprint as needed (processing time is faster when already rendered).



For more detailed instructions for the IColor ProRIP software, please consult the IColor ProRIP User Manual. Visit www.icolorprint.com/support for the most updated written and video instructions on the IColor ProRIP software.

Toner Cartridge Replacement Guide

Because the IColor 600 features cartridge remapping to achieve a white underprint or overprint, it is important that you follow these rules when determining which color cartridge to order (pertains to both toner and drum units):

OVERPRINT Queue Configuration Supplies Replacement Guide

Typically used for reverse print applications such as garment decoration

Printer Display Reads:	Replace with:
Cyan low/out/empty	White/Clear (check which cartridge is installed) (Back of Printer)
Magenta low/out/empty	Magenta
Yellow low/out/empty	Yellow
Black low/out/empty	Cyan (Front of Printer)

UNDERPRINT & CMYK Queue Configuration Supplies Replacement Guide

Typically used for right side reading application such as printing on dark or clear media

Printer Display Reads:	Replace with:
Cyan low/out/empty	Cyan (Back of Printer)
Magenta low/out/empty	Magenta
Yellow low/out/empty	Yellow
Black low/out/empty	White/Clear/Black (check which cartridge is installed) (Front of Printer)

IMPORTANT NOTES:

- 1) When moving cartridges between overprint, underprint and CMYK configurations, the toner and drum units must move as a set. Never disengage or turn the blue lever of the toner unit during this process. You cannot put the white toner cartridge into the cyan drum unit (or vice versa) as it will cause catastrophic contamination, rendering the drum unit unusable.
- 2) Always power down your printer before moving cartridges to prevent electrostatic damage.
- 3) When switching cartridge configuration and also changing the white/black/clear cartridge, it should be done in two separate steps. It is not suggested to do this all at the same time. First switch the configuration, then power on the machine. Once it comes to ready, power down and swap the black/white/clear cartridge and power on again. Failure to follow this procedure could result in a cartridge error.
- 4) The black, white or clear cartridges can never be installed together. Only one of these 3 cartridges can be installed at any one time.

Use Genuine UNINET IColor Consumables

Only use genuine UNINET IColor consumables. The use of incompatible supplies (toner, drums, transfer belts, fusers) will cause damage to your printer not covered by your warranty.

Printing with Fluorescent Colors

Instantly transform your IColor printer into a fluorescent printer where the printed images produced will glow brightly under UV light. The upgrade kit consists of 3 toner and 3 drum cartridges (CMY) and is shipped in 6 separate boxes. Simply remove and store the standard CMY toner/drum cartridges and swap with the fluorescent kit to instantly print with UV sensitive toner while using the standard black cartridge in place. The white cartridge that shipped with your IColor 600 printer can also be used if a white overprint is required.

Operating on the same application principles as standard toner that ships with your machine, you can print and/or press onto virtually any surface using the appropriate transfer paper – or print directly onto paper, transparencies and label stock regardless of which printer is being used. Be sure to design your graphics with bright colors – avoid dark or black colors (unless specifically wanted), as those will not fluoresce well and may not look good as a final product. Most fluorescent images will be placed on a black or dark colored garment, so black would not be suggested in these cases anyway.

Specific installation instructions can be found at www.icolorprint.com/support

Printing with Dye Sublimation Toner

Instantly transform your IColor printer into a sublimation printer. The upgrade kit consists of 4 toner and 4 drum cartridges (CMYK) and is shipped in 8 separate boxes. Simply remove and store the standard cartridges and swap with the sublimation kit to instantly print and sublimate on coated materials.

Operating on the same application principles as standard ink sublimation systems, you must press onto white 100% polyester or sublimation coated materials for best results. 50/50 cotton poly blends may also be used for a lighter, vintage look. There is no white overprint option with sublimation, only CMYK prints are possible.

The IColor Dye Sublimation Upgrade Kit has several unique advantages suited for a production environment:

- Vastly faster print speeds: 35 pages per *minute* vs 34 pages per *hour* for ink (photo mode).
- No clogged heads resulting from non-use. Toner based systems do not have this maintenance issue.
- Longer expiration period.
- Much higher page yield: 5,000 pages standard toner vs 350 pages for starter ink.
- Use of regular copy paper instead of special dye sublimation paper.

Specific installation instructions can be found at www.icolorprint.com/support

Ask your dealer about upgrading to security and clear toner options as well!



Why use IColor SmartCUT?

SmartCUT allows owners of smaller width printers to gain the benefits of tabloid or larger sized printers.

SmartCUT is a user centric tool that is a key component to expanding the size constraints of popular print methods, especially as it relates to transfer printing commonly associated with garment decoration. This ground breaking application turns your letter / A4 sized printer into a tabloid 'plus' capable machine, allowing for the splitting and splicing of one graphic across two or more printed transfer sheets without seeing the seam!

Use any oversized graphic along with a transparent transfer sheet, and the software will split it in half along the most logical path. You can choose to have it split along dark or light areas, depending on the color garment you will be pressing onto. With this software, you can make large designs that are not possible with even the most expensive of printing systems because you can split up your graphic onto as many transfer sheets as you want.

SmartCUT can be used in tandem with any RIP software package and printer. It was designed from the ground up with ease of use as a paramount consideration. Most functions are automated to allow you to focus on finding the best starting point to split each job. Final results can be used on virtually any printer. White toner printers highly recommended.

SmartCUT supports many file types such as PNG, JPG, BMP, GIF and TIFF files.

The program works as an integral part of a decorating system, where the split pages are printed onto IColor Standard or Select transparent transfer media. The sheets are then lined up visually on the substrate through the transparent sheet.

Print and press onto plus size garments such as 2X, 3X, 4X. The ability to print designs that properly fill out these large sizes creates the opportunity for high value garments that can fetch a premium price. A very high percentage of designs used are virtually imperceptible by even those who know that a seam exists.


SmartCUT is more than just 'splitting software' – it's a RIP enhancement tool!

New features include:

- The 'Selective Masking Tool' allows you to point and click to rasterize or distress elements of your design based on color or shape.
- IColor ProRIP software integration for ease of use.
- The 'Real Preview' tool which applies the white adhesive behind the image (digitally) and then applies the image it to the color and texture of a shirt. The result is a much more realistic preview of how your image will look once pressed.

Color Registration Procedure

If the printer registration is out of alignment, run the Color Registration Procedure

 Signs of this would appear as outlines of white or color around your graphic.

IMPORTANT! Remove the white toner and put the printer into the CYMK configuration with the black cartridge in the first slot and the cyan in the last slot.

Basic Procedure:

1. Press the Menu Key.
2. Scroll down to “Calibration” and press Enter.
3. Scroll down to “Adjust Registration” and press Enter.
4. Display shows “Adjust Registration Execute” and press Enter.

Advanced Procedure (Recommended):

1. Turn off the printer.
2. Press and hold down the Up Arrow, Down Arrow and Help Keys while turning the printer on.
3. Continue to hold the keys and “System Maintenance” will appear - press Enter.
4. Enter the password ‘000000’ and then press enter. (For the IColor 600, use the keypad)
5. In this new menu, scroll to “Diagnostic Mode” and press Enter.
6. Scroll to “Reg Adjust Test” and press Enter.
7. Displayed is “Reg Adjust Execute” and press Enter.
8. Once complete, use Left Arrow Key to back out to home screen.
9. Printer displays “Ready to Print”

Printing Tips

When transferring images with halftones, it's possible that some of the adhesive from your 2 step paper will not transfer over to the toner during the first step. If you see this happen with your image, just reprint the image with a white overprint using the ProRIP to thicken up the density and give the adhesive something to stick to. Halftone colors use much less toner. Printing the white over the image will fill in the halftones of color, with density below 70%. Using white overprint is necessary, even when transferring to white colored textiles.

There are many variables that could produce different results. Specific steps may need to be altered based on:

- Type and brand of Heat Press: The temperature and duration varies slightly based on the heat press being used. All instructions are based on using a Hotronix Fusion press. Clam shell and other types of swing away presses may also yield different results.
- Type of image: Photos or full color graphics may require a longer press time than vector images or text.
- Type of garment or substrate: Cotton, Polyester, and Spandex material all respond differently to heat, as do hard surfaces like acrylic or wood. All textile instructions are based on cotton garments.
- Toner Coverage: Halftones in image may cause undesired results. Toner coverage should not be less than 70%, otherwise there will be issues with transferring the adhesive to the transfer sheet. Halftones can be corrected by printing white on top of color using the IColor ProRIP Software to apply a white layer in one pass. This will help with toner coverage and proper adherence to the garment.

To find the serial number of your unit, there are 3 ways:

- 1) Printed on the outside of the box the printer shipped in.
- 2) Through the control pad on the printer: Menu / Configuration / System / Serial number.
- 3) Print a system configuration page: Menu / Print Information / Configuration.

Consult the IColor knowledge base for specific instructions on a variety of transfer paper offered at:

<http://www.icolorprint.com/support>

(Or scan this QR Code)



Technical Support Email: Log a ticket at <https://www.icolorprint.com/get-support>

Technical Support Phone: 631-590-1040, Option 2

SAVE THE BOX AND PACKAGING! Needed if the machine needs to be sent back for service.

ALSO AVAILABLE:

- IColor Premium and Premium Stretch 2-Step Transfer Paper for light and dark colored garments
- IColor Select and Select Ultra Bright 2-Step Transfer Paper for light and dark colored garments
- IColor Standard 2-Step Transfer Paper for light and dark colored garments
- IColor Glitter Adhesive 2-Step Transfer Paper (for use with IColor Standard 2-Step Transfer Paper)
- IColor Light and Speed Trans Light 1-Step Transfer Paper for light colored garments
- IColor Presto 2-Step Transfer Paper for textiles and hard surfaces
- IColor Temporary Tattoo 2-Step Transfer Paper
- IColor Classic, Premium, Wood and Leather and Ceramic Hard Surface 1-Step Transfer Paper
- IColor AquaClear 1-Step Transfer Paper for candles and other substrates not resistant to heat
- IColor Label / Sticker Paper (Clear and White) in Letter and Tabloid size
- IColor Window Cling Media (Clear and White) in Banner and cut sheet options
- IColor Banner Paper
- IColor Magnetic Media in Letter and Tabloid size

...and more! Contact your dealer for more information.

IColor Transfer Paper Comparison Charts

ICOLOR TEXTILE TRANSFER PAPER

ATTRIBUTE	PREMIUM	PREMIUM STRETCH	STANDARD	SELECT UB	SELECT	PRESTO	LIGHT	SPEEDTRANS LIGHT
PROCESS	2 Step	2 Step	2 Step	2 Step	2 Step	2 Step	1 Step	1 Step
DURABILITY (# of Washes @ 104 °F/40 °C)	Up to 100	Up to 100	50+	50+	50+	50+	15+	15+
DARK TEXTILES (BRILLANCE)	BEST	BEST	BETTER	BEST	GOOD	BETTER	FAIR	FAIR
DELICATE TEXTILES	BEST	BEST	GOOD	GOOD	GOOD	GOOD	NOT RECOMMENDED	NOT RECOMMENDED
STRETCHABILITY	BETTER	BEST	GOOD	BEST	BEST	GOOD	GOOD	GOOD
FINISH	MATTE	MATTE	SEMI GLOSS	MATTE	MATTE	SEMI GLOSS	SATIN	SATIN
TRANSFER 'A' SHEET CHARACTERISTIC	OPAQUE	OPAQUE	TRANSPARENT	TRANSPARENT **	TRANSPARENT	OPAQUE	OPAQUE	OPAQUE
PRESS TEMPERATURE (°F/°C)	250°F / 120°C	285°F / 140°C	310°F / 154°C	310°F / 154°C	310°F / 154°C	285°F / 140°C	390°F / 200°C	375°F / 190°C
PRESS TIME	30 + 30 secs	45 + 10 secs	120 + 30 secs	120 + 25 secs	120 + 25 secs	120 + 30 secs	15 secs	10 secs
SOFT HAND	BEST	BEST	GOOD	GOOD	GOOD	GOOD	BETTER	BETTER
COST	\$\$\$	\$\$\$	\$\$	\$\$	\$\$	\$\$	\$	\$

* Select 800 Ultra Bright has an opaque 'A' sheet

ICOLOR TEXTILE TRANSFER PAPER

ATTRIBUTE	PREMIUM	PREMIUM STRETCH	STANDARD	SELECT UB	SELECT	PRESTO	LIGHT	SPEEDTRANS LIGHT
PROCESS	2 Step	2 Step	2 Step	2 Step	2 Step	2 Step	1 Step	1 Step
DURABILITY (# of Washes @ 104 °F/40 °C)	Up to 100	Up to 100	50+	50+	50+	50+	15+	15+
DARK TEXTILES (BRILLANCE)	BEST	BEST	BETTER	BEST	GOOD	BETTER	FAIR	FAIR
DELICATE TEXTILES	BEST	BEST	GOOD	GOOD	GOOD	GOOD	NOT RECOMMENDED	NOT RECOMMENDED
STRETCHABILITY	BETTER	BEST	GOOD	BEST	BEST	GOOD	GOOD	GOOD
FINISH	MATTE	MATTE	SEMI GLOSS	MATTE	MATTE	SEMI GLOSS	SATIN	SATIN
PRESS TEMPERATURE (°F/°C)	250°F / 120°C	285°F / 140°C	310°F / 154°C	310°F / 154°C	310°F / 154°C	285°F / 140°C	390°F / 200°C	375°F / 190°C
PRESS TIME	30 + 30 secs	45 + 10 secs	120 + 30 secs	120 + 25 secs	120 + 25 secs	120 + 30 secs	15 secs	10 secs
SOFT HAND	BEST	BEST	GOOD	GOOD	GOOD	GOOD	BETTER	BETTER
COST	\$\$\$	\$\$\$	\$\$	\$\$	\$\$	\$\$	\$	\$

IColor 600 System Specifications

Print Speed: Print Speed: Letter/A4 – up to 35 ppm Color and Monochrome; Tabloid/A3 – up to 20 ppm
(Transparency setting speeds may vary)

Processor: 800 MHz

Duty Cycle: Up to 75,000 pg/mo.

Duplex: Optional

Memory: Standard 256 MB; maximum 768 MB

Resolution: 1200 x 600

Emulation: PCL® 6, PCL 5c; PostScript® 3™

Operating Systems: Standalone and network - Microsoft Windows® 7 / 8 / 10 (x32 & x64); Mac® support OS X 10.4 and higher (Printer only, RIP Software is for Windows PC's only)

Interfaces: 10/100-TX Ethernet, High Speed USB v2.0

Multipurpose Tray: Standard 100-sheet; handles transfer media, card and mailing label stock

Paper Cassette: 400-sheet Legal/Letter/Universal

Paper Sizes (Min./Max.): A3, Tabloid, A4 (LEF), A4 (SEF), Letter (LEF), Letter (SEF), A5, Legal 13/13.5/14, Executive and banners up to 52" long

Paper Weight: Main Tray 17 lb. bond – 54 lb. bond/ 80 lb. cover (64 – 220 gsm); 2nd and 3rd Trays 17 lb. – 47 lb. bond (64 – 176 gsm); Multi-purpose Tray 17 lb. bond – 140 lb. index (64 – 256 gsm); Duplex 17 lb. – 54 lb. bond/80 lb. cover (64 – 220 gsm)

Size: (WxDxH): 17.6" x 21.7" x 14.2" (449 mm x 552 mm x 360 mm)

Weight: 81.6 lb. (37 kg)

Power Consumption (maximum): 8 amps (120v models) or 5 amps (230v models)

Power Options: 120v & 230v models