

# UniNet<sup>®</sup>

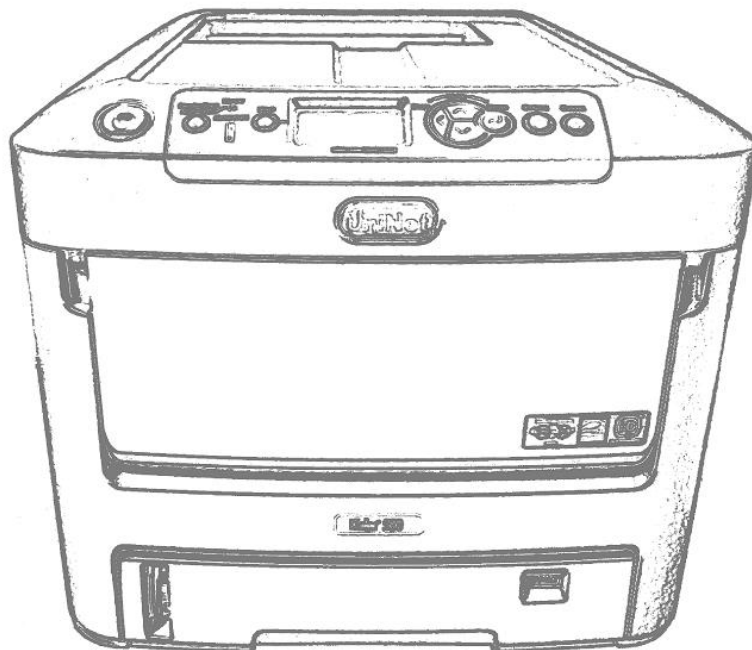
# iColor<sup>®</sup>

PRINTING SOLUTIONS

PRINT ON DEMAND

ANY JOB | ANY SIZE | ANY TIME

## iColor<sup>®</sup> 500 Digital Color + White Transfer Media Printer User Manual



# Table of Contents

iColor® 500 Model Summary	Page 3
Installing Consumables	Page 4 - 8
Printer Software Installation Instructions – USB connection	Page 8 - 11
Printer Software Installation Instructions – Network connection	Page 11 - 14
iColor® TransferRIP Information	Page 14 - 15
Printing with Fluorescent and Dye Sublimation Toner	Page 16
Replacing toner and drum cartridges	Page 17
Printer Settings for iColor® Premium Transfer Media	Page 18 - 20
White print Instructions (without iColor® TransferRIP)	Page 21
Multipurpose tray settings	Page 22 - 27
iColor® 500 Printing Tips	Page 28 - 29
iColor® 500 Printer Spec Sheet	Page 30

Refer to the included Flash Drive that shipped with your printer for in depth instructions. iColor® TransferRIP license code will also be provided on drive (if purchased).

August 2017 Edition – A newer version of this manual may be available at [www.icolorprint.com/support](http://www.icolorprint.com/support)

# iColor® 500 Digital Color + White Transfer Media Printer

The iColor® 500 printer has been developed to produce high-quality conventional color prints with the out of the box functionality of printing in white.

Please follow the enclosed quick setup guide to get started. The iColor® 500 comes complete with 4 toner cartridges for full color and black printing (CMYK), as well as our exclusive fluorescent white printing kit (toner and drum combination). Quickly swap the black for white when you want to add white as a spot color, or to print a white underprint or overprint in concert with the iColor® TransferRIP software. Black can then be produced using composite black (made from CMY), or if true black and white is needed at the same time, just pass the print through the printer a second time. Our registration system will ensure the prints are lined up perfectly.

You will also have the option to add the fluorescent toner or dye sublimation toner upgrade kits, as well as the exclusive iColor® security and clear toner options at any time.

Please note that vector and line art images, including text, are likely to produce the best results. For exciting design ideas and suggestions for using the iColor® 500 for maximum effect, please visit our website at [www.icolorprint.com](http://www.icolorprint.com).

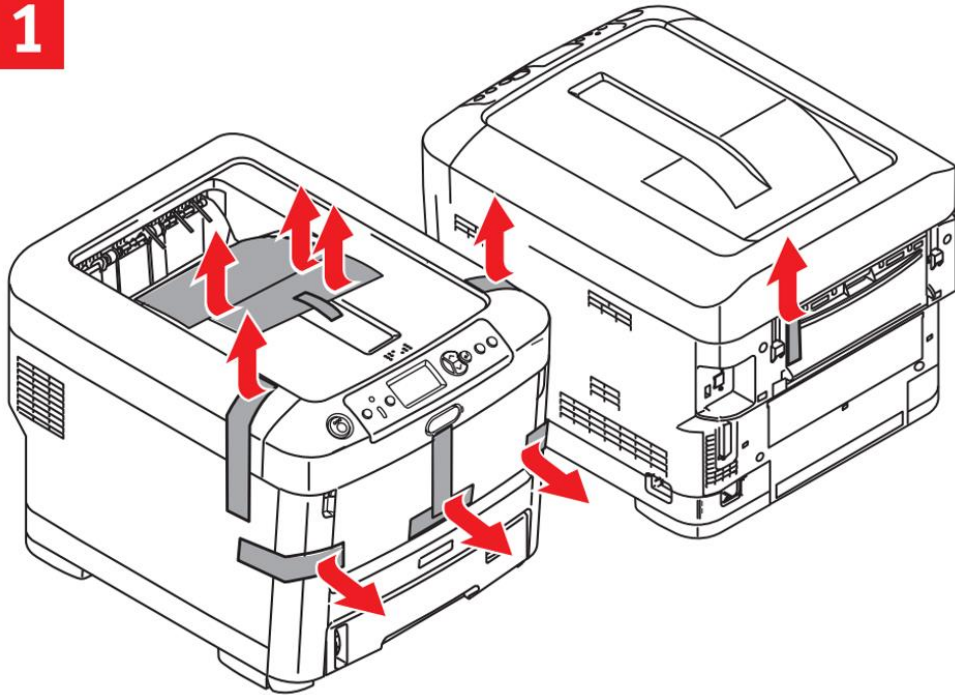
iColor® Premium Transfer media has been optimized to provide quality results when used with the printer, enabling the user to produce eye-catching designs which may be applied to a variety of textiles and surfaces.

## **What's so unique about the iColor® 500 Digital Color + White Transfer Media Printer?**

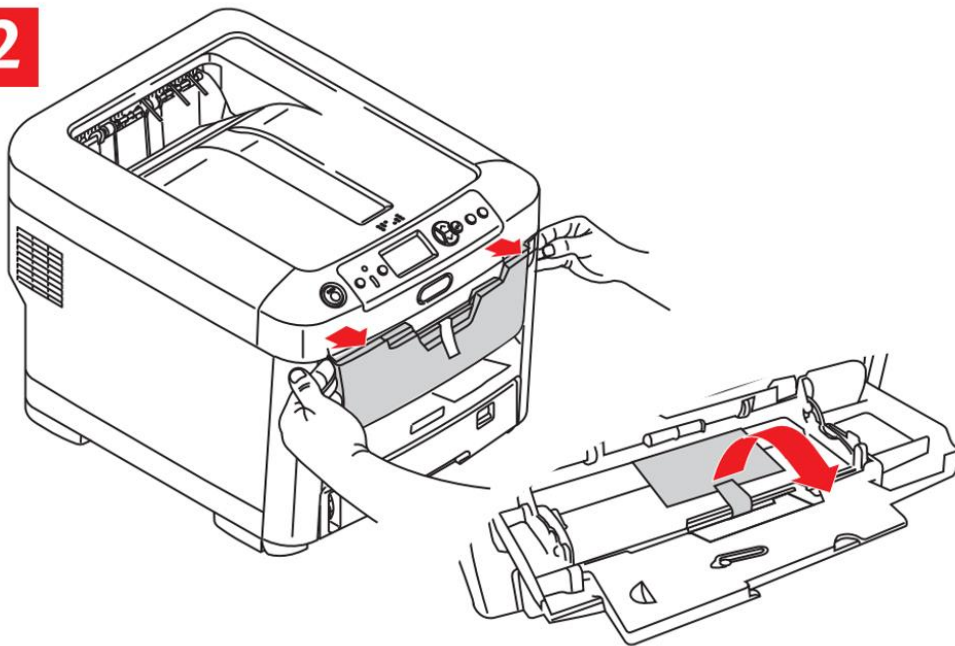
- The ability to print white as an underprint AND an overprint in the same machine, in one pass, using the iColor® TransferRIP software (known as 'A' and 'B' configurations).
- The white opacity of UniNet's unique blend of toner is double that of any other brand, giving you the brightest whites and solid background to bring out the vibrancy of your colors.
- The true black cartridge is included with the printer, allowing you to switch to CMYK mode to print items such as brochures and menus when white is not needed.
- Optional sublimation, fluorescent, security and clear toner cartridge options.
- Lowest cost and most flexible machine available.
- No maintenance associated with ink based machine is necessary. The iColor® 500 is a toner based system.
- Large array of media available for virtually any project.
- Global sales, support and service direct from UniNet or its dealer network.

# Installing Consumables

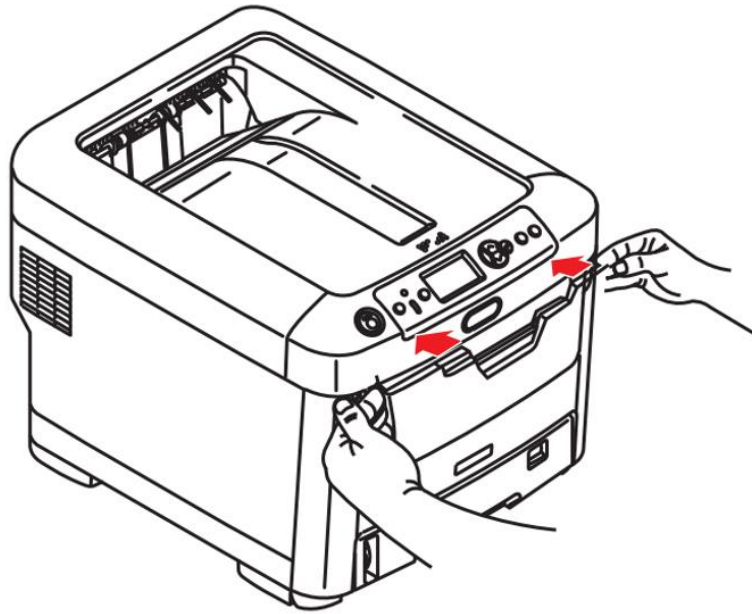
1



2

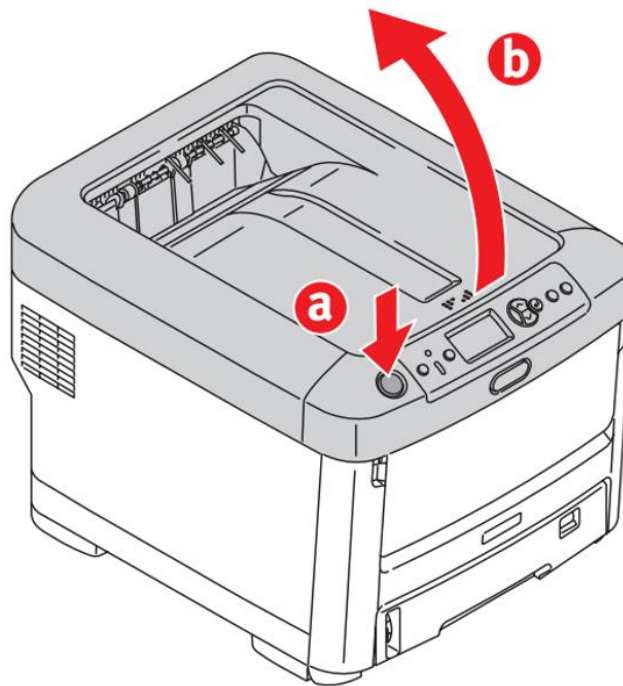


3



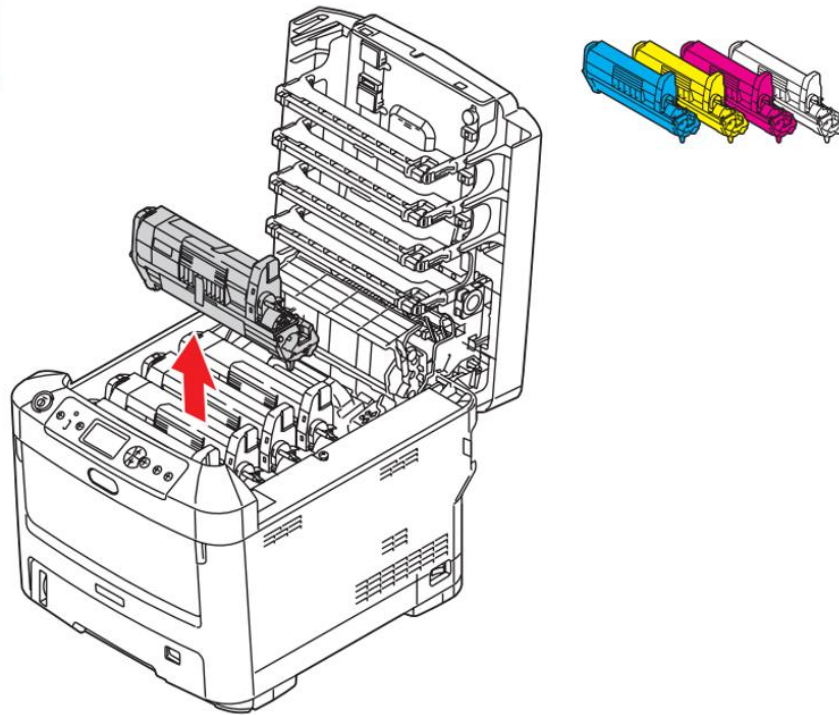
Remove security tape and packing material and reinstall MPT Tray

4



Press button 'a' and lift cover 'b'

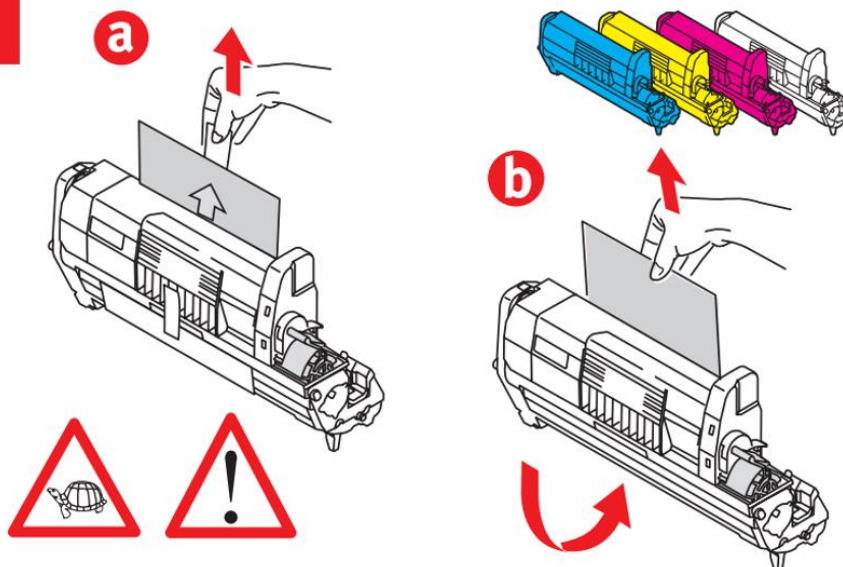
5



Remove the cartridges. Note that the toner and drum cartridges come out as a set.

**NOTE:** The white cartridge that came preinstalled in your machine is already in the locked position. Just remove the protective covering but do not move the blue handle! Doing so can cause toner to spill.

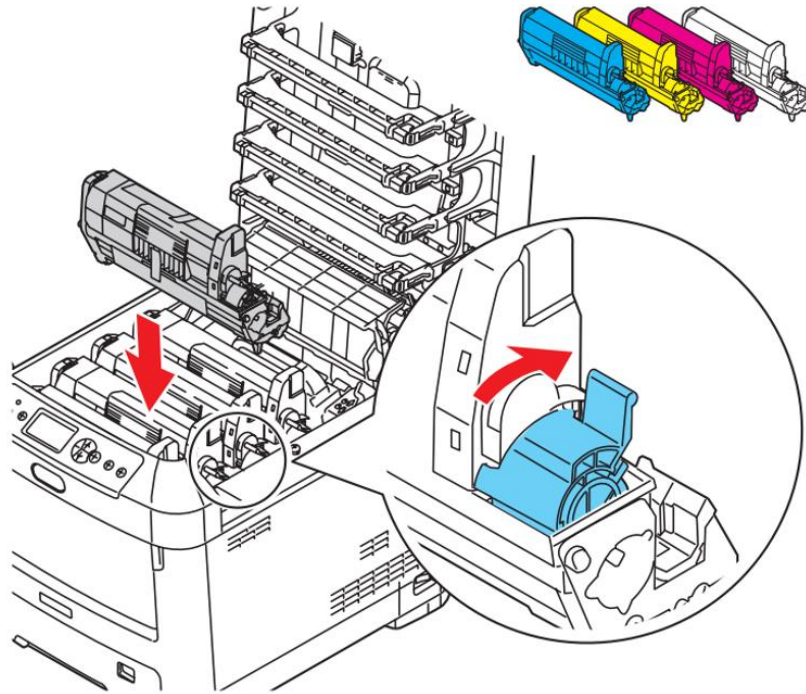
6



Carefully remove the protective covering from each cartridge

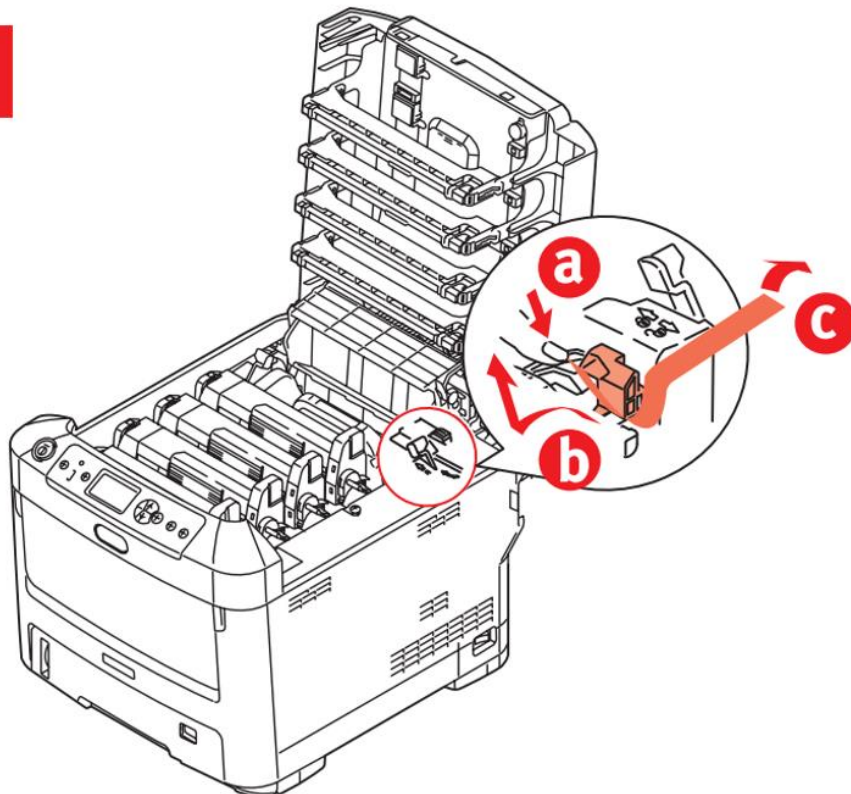


7



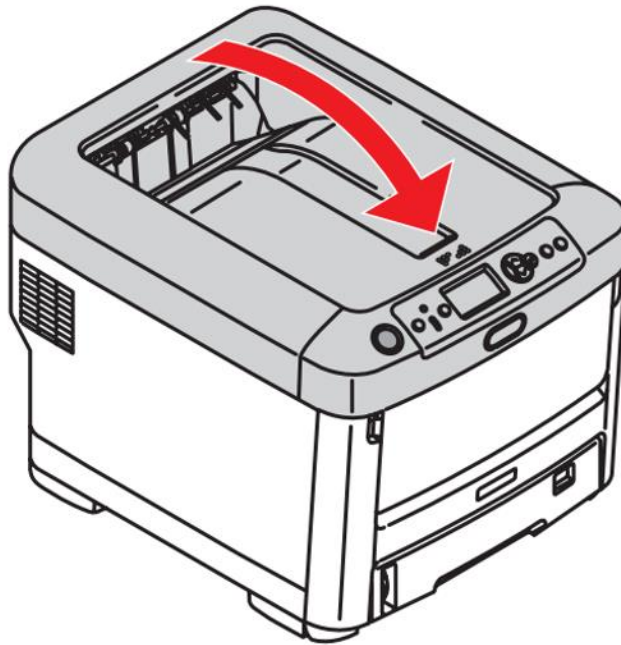
Replace each cartridge in the proper slot and slide the blue lever forward to engage each cartridge. Make sure the handles are completely forward.

8



Remove fuser lock

9



Close cover

NOTE: Only turn the blue lever of the toner cartridge AFTER it is reinstalled into its corresponding drum unit. Turning the blue lever while disengaged from the drum unit will open the supply and cause the toner to dump out of the cartridge.

## Installing iColor® 500 printer on a PC

These following instructions are for Windows 7, 8, and 10 via USB and Network. **You must have Administrator privileges on the computer to proceed.**

### USB Setup:

1. Unpack the printer according to the Set-up Guide. **Do not turn on or connect your iColor® printer to the computer until the install program asks you to do so.** Doing so can cause errors during installation.
2. Locate the installation file on the USB drive or CD that was shipped with your printer and double click to launch the setup program.

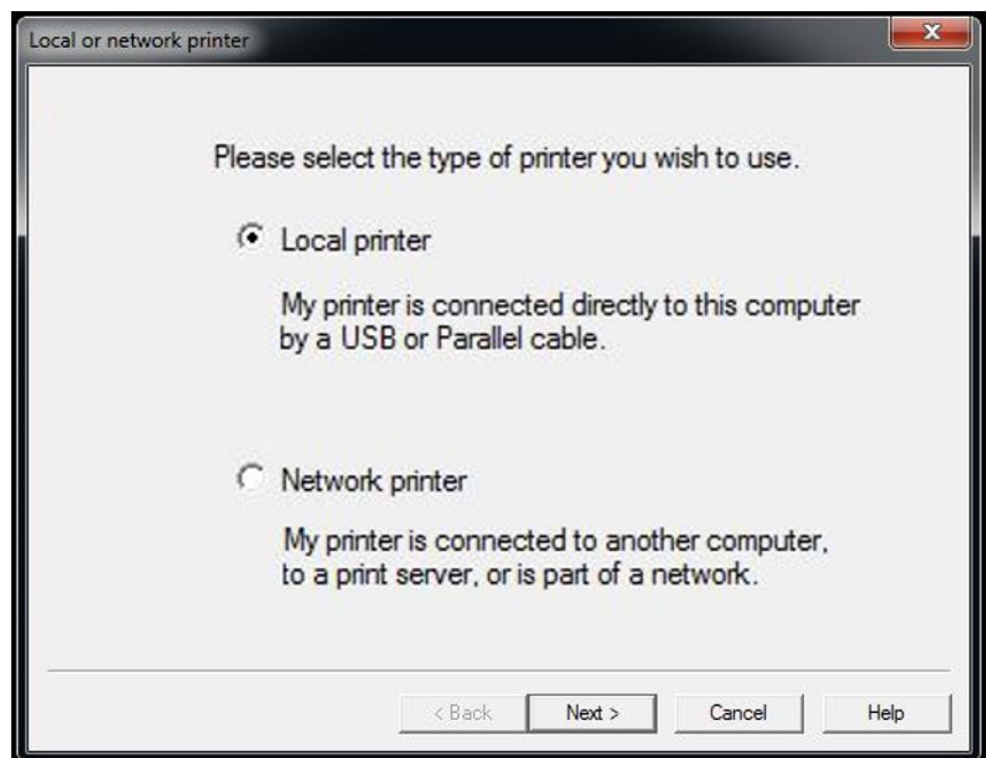




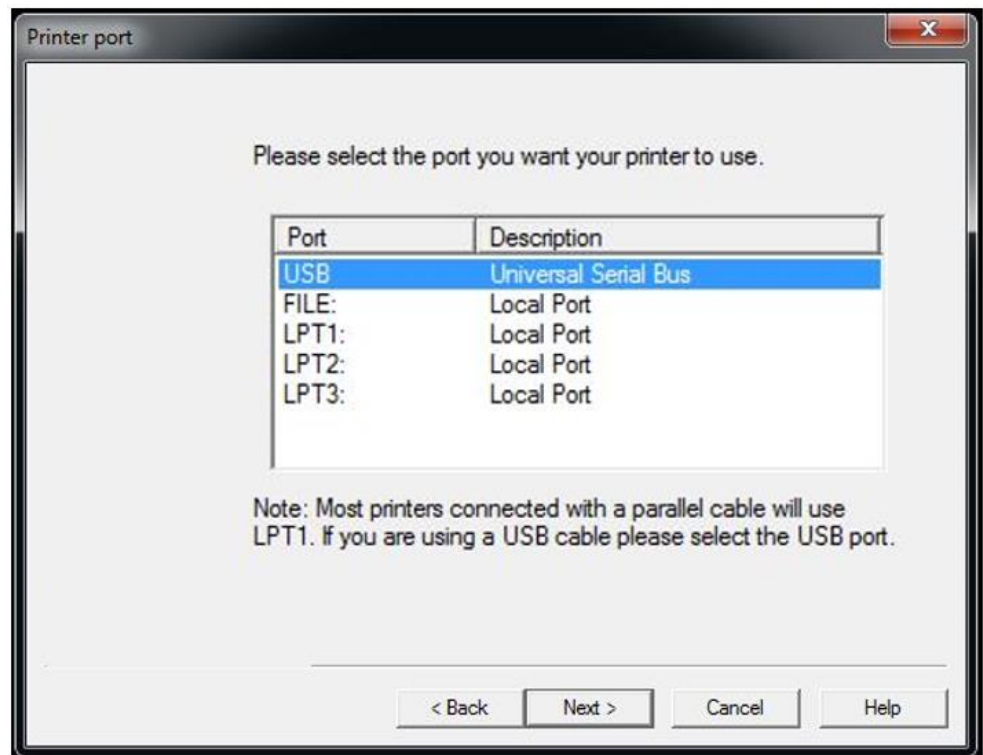
3. Click continue to install the iColor® 500 driver.



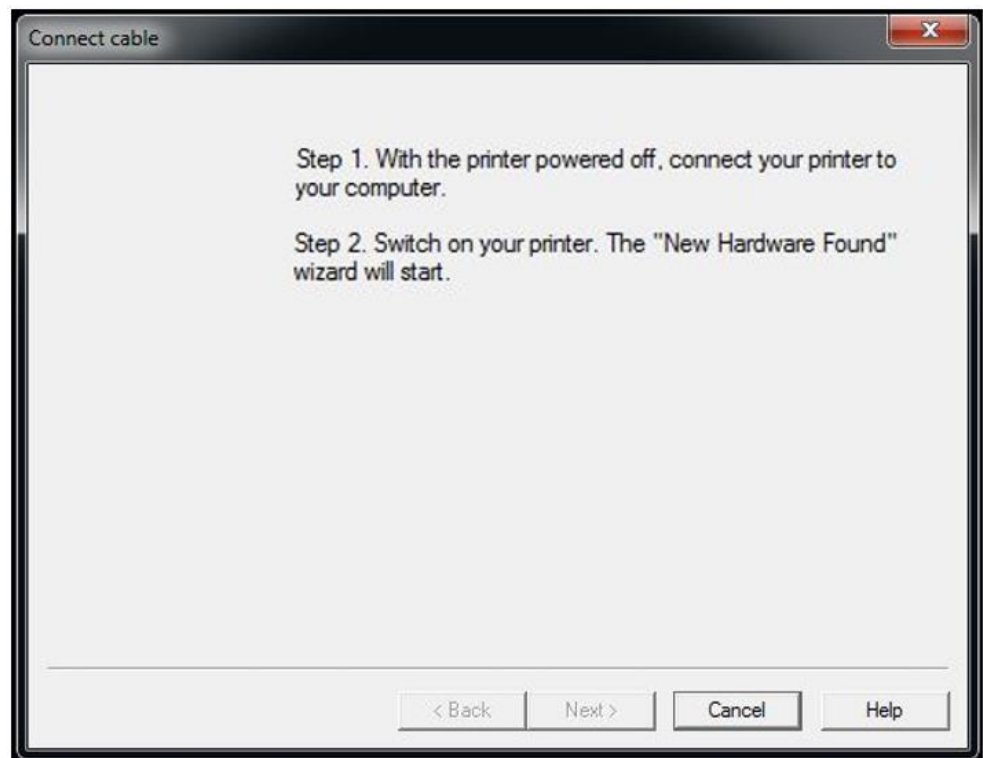
4. Select 'Local printer' and click next



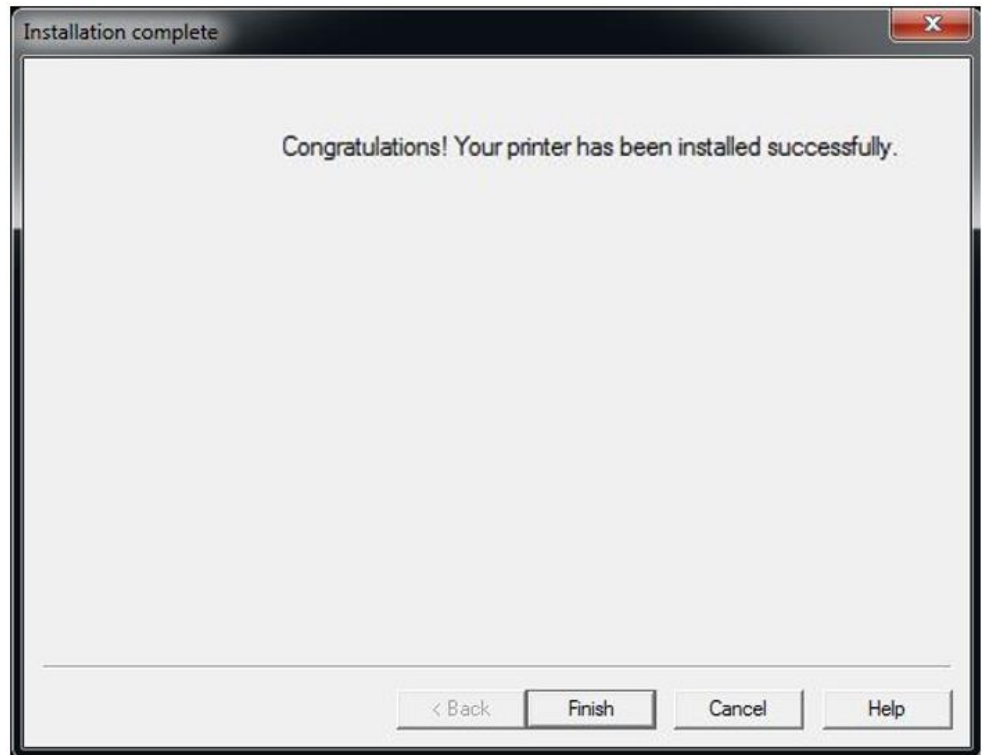
5. Highlight 'USB' under the port settings and click next. Highlight the printer (identified as C711), and click next.



6. Once the following screen has been reached, it is now safe to connect the printer and computer via USB and power on the printer.



7. Click finish to complete the installation.



## Network Setup:

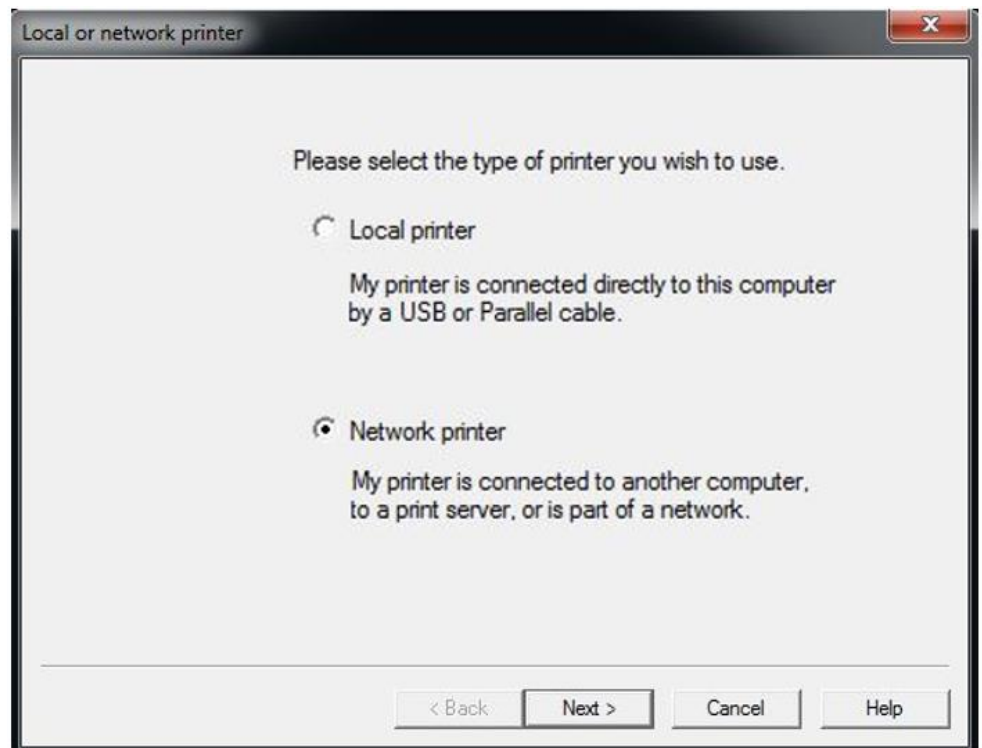
1. Unpack the printer according to the Set-up Guide. Connect the printer to your network via CAT 5 cable and power on the printer. Your network will automatically assign an IP address to the printer, but it is suggested that you program a static IP address to the printer to avoid possible reassignment of the IP address should the machine be powered off.
2. Locate the installation file on the USB drive or CD that was shipped with your printer and double click to launch the setup program.



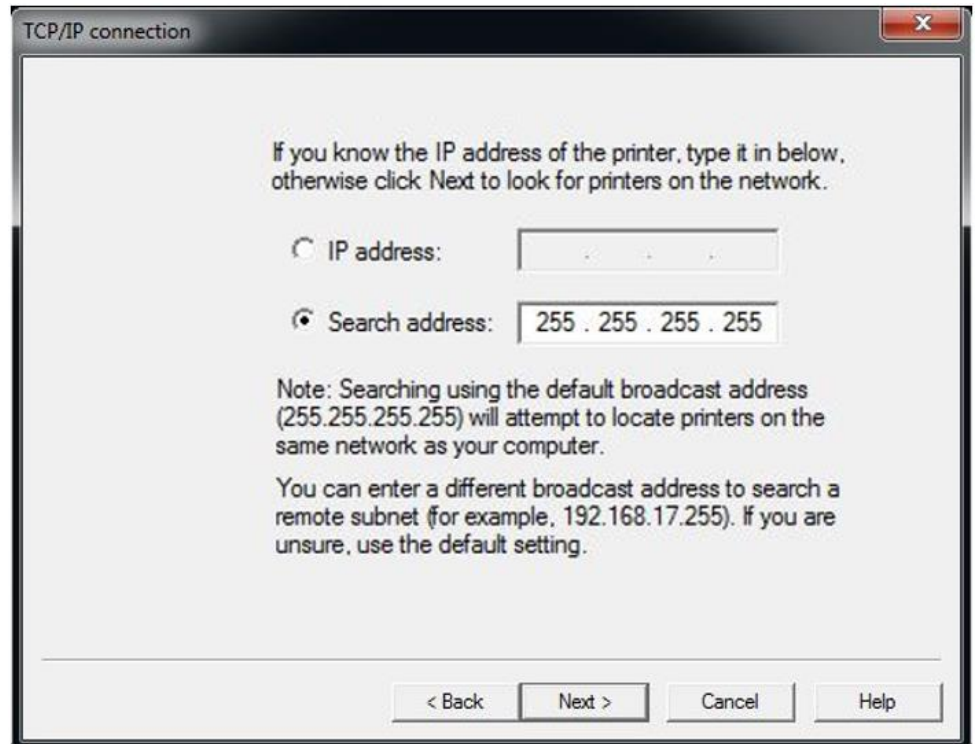
3. Click continue to install the iColor® 500 driver.



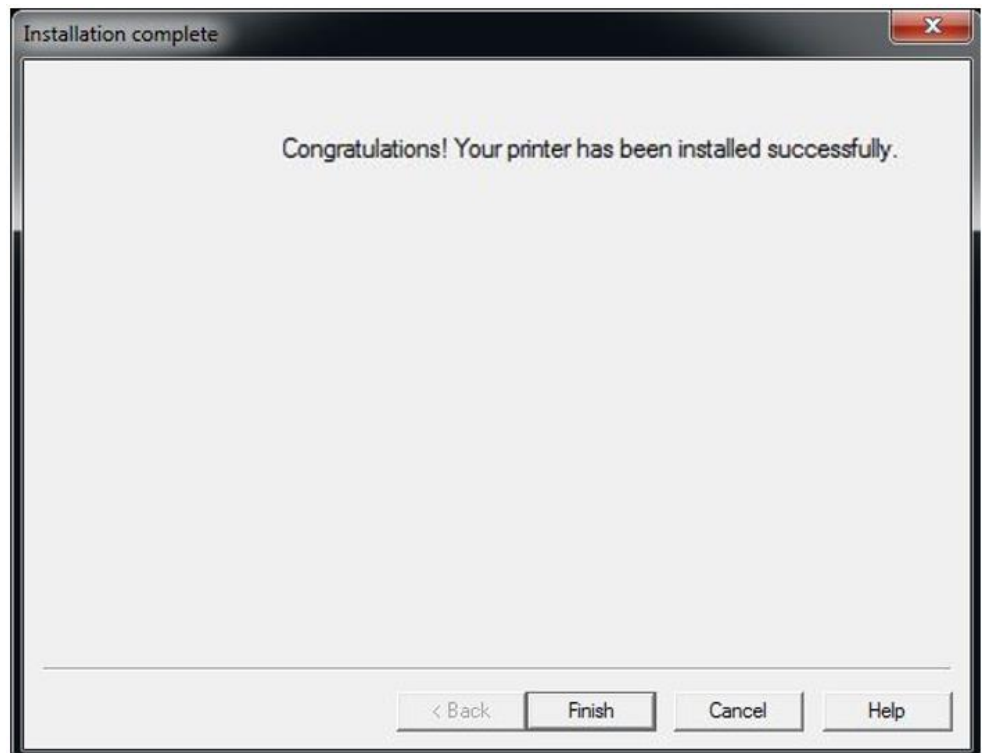
4. Select 'Network printer' and click next.



5. Select 'Search address' and click next. The software will detect the printer on your network. (identified as C711). Highlight the printer, click next, next and the software will be installed.



6. Click 'finish' to complete the installation.





7. Your printer will now be listed along with your other printers and devices.

#### Printers and Faxes (9)



Adobe PDF



Fax



HP LaserJet 4000



iColor 500

8. You are now ready to install the iColor® TransferRIP software (if purchased). Installation software and instructions would be on the flash drive that came with your printer, or they may have been emailed to you by your dealer.



**iColor® TransferRIP**  
COLOR PROFILE • WHITE CONTROL • RASTERIZATION

[www.icolorprint.com](http://www.icolorprint.com)

## Why use the iColor® TransferRIP?

Use the iColor® TransferRIP software to print fluorescent white as an underprint or overprint in one pass.

The iColor® TransferRIP software allows the user to manipulate the white layer behind the graphic for printing on dark or transparent media where white is needed as a background color. Two cartridge configurations are available to easily adjust for reverse printing, where white is needed as a top color for apparel. No need to create additional graphics with different color configurations – the software does it all – and in one pass! Enhance the brilliance of any graphic with fluorescent white behind color.

#### Print and Transfer onto:

Natural and synthetic fabrics  
Dark and light fabrics  
Beer, wine and juice bottles  
White, colored or clear labels  
Leather  
Dark and light paper stock  
Foils  
Transparencies with fluorescent white as a background color

#### Create unique items - The possibilities are endless!

T-shirts and sweatshirts  
Aprons  
Dark restaurant menus with fluorescent white print  
Corporate logo shirts  
Mouse pads  
Sports apparel  
Jackets  
Tote bags  
Signs with colored, white or fluorescent toner

The iColor® TransferRIP is the magic behind one pass printing with white as an underprint or an overprint. The most important point of the iColor® TransferRIP software is that it allows colors to be put down in layers. Regular printer drivers only concern themselves with what the eye sees on the top layer, the RIP allows you to separately control each layer, thus giving you the ability to control not only what you see, but what is behind that top layer (typically the white layer). The iColor® TransferRIP gives you the unique ability to use one machine to print images with white as an underprint or an overprint. You can now print vibrant colors on clear or dark media regardless of the background to which it is applied, where the white is put down first and the colors afterwards. The iColor® TransferRIP 'Color Mapping' feature also allows for 'Reverse Printing' when printing and transferring to garments where white is put down last. This is the only way to achieve white underprint and overprint in one pass, and you will not find another machine on the market today that can do all of this. The software also allows for color manipulation and removal, cost estimation, rasterization and advanced layout tools. It ships as an add-on with the iColor® 500.

To accomplish these two features, UniNet has created two configurations to suit any printing project:

'A' Configuration is for right side printing and allows for printing white as an underprint in one pass (typically used for transparencies, clear labels, dark media, clear acrylics or Aqua Clear paper). The black and white cartridges can be swapped within the first slot depending on your needs. This configuration is for printing standard CMYK images when the black is installed or CMYW images when white is installed. When the white is installed in the black slot, this is configured for 'Right Side Printing' where the white is printed first, as an underprint, all in one pass. In this situation, the RIP converts pure K colors to CMY composite black, and puts in white not only as a background color but also in the image where white or page white is specified.

'B' Configuration allows for printing white as an overprint in one pass for reverse printing (typically used for transfer printing). This configuration calls for a special second set of white and cyan toner and drum cartridges. For the 'B' Configuration, the white cartridge is placed in the last slot (cyan station) and the cyan cartridge is placed in the first slot (black station) of the printer. The Color Mapping feature explained in this manual overrides the basic driver of the printer and automatically sends the proper color to the proper channel. This configuration is for garment printing where white is needed as an overprint, applied on top of all the other colors. When the image is pressed to the garment, the transfer sheet is flipped over and the white becomes the underprint.

This is especially important where images have half tones and 100% transfer of the image is an issue or when there is white in the image that needs to show through for dark colored garments.

Visit [www.icolorprint.com/support](http://www.icolorprint.com/support) for full written and video instructions on the iColor® TransferRIP software

# Printing with Fluorescent Colors

Instantly transform your iColor® printer into a fluorescent printer where the printed images produced will glow brightly under UV light. The upgrade kit consists of 3 toner and 3 drum cartridges (CMY) and is shipped in 6 separate boxes. Simply remove and store the standard CMY toner/drum cartridges and swap with the fluorescent kit to instantly print with UV sensitive toner while using the standard black cartridge in place. The white cartridge that shipped with your iColor® 500 printer can also be used if a white overprint is required.

Operating on the same application principles as standard toner that ships with your machine, you can print and/or press onto virtually any surface using the appropriate transfer paper – or print directly onto paper, transparencies and label stock regardless of which printer is being used. Be sure to design your graphics with bright colors – avoid dark or black colors (unless specifically wanted), as those will not fluoresce well and may not look good as a final product. Most fluorescent images will be placed on a black or dark colored garment, so black would not be suggested in these cases anyway.

Specific installation instructions can be found at [www.icolorprint.com/support](http://www.icolorprint.com/support)

# Printing with Dye Sublimation Toner

Instantly transform your iColor® printer into a sublimation printer. The upgrade kit consists of 4 toner and 4 drum cartridges (CMYK) and is shipped in 8 separate boxes. Simply remove and store the standard cartridges and swap with the sublimation kit to instantly print and sublimate on coated materials.

Operating on the same application principles as standard ink sublimation systems, you must press onto white 100% polyester or sublimation coated materials for best results. 50/50 cotton poly blends may also be used for a lighter, vintage look. There is no white overprint option with sublimation, only CMYK prints are possible.

The iColor® Dye Sublimation Upgrade Kit has several unique advantages suited for a production environment:

- 1) Vastly faster print speeds: 35 pages per **minute** vs 34 pages per **hour** for ink (photo mode)
- 2) No clogged heads resulting from non-use. Toner based systems do not have this maintenance issue.
- 3) Longer expiration period
- 4) Much higher page yield: 5,000 pages standard toner vs 350 pages for starter ink

Specific installation instructions can be found at [www.icolorprint.com/support](http://www.icolorprint.com/support)

Ask your dealer about upgrading to security and clear toner options as well!

# Use Genuine UniNet iColor® Consumables

Only use genuine UniNet iColor® consumables. The use of incompatible supplies (toner, drums, transfer belts, fusers) will cause damage to your printer not covered by your warranty.

## Replacing toner and drum cartridges

Because the iColor® 500 features cartridge remapping to achieve a white underprint or overprint, it is important that you follow these rules when determining which color cartridge to order (pertains to both toner and drum units):

### **‘A’ Configuration Supplies Replacement Guide**

**This is for white UNDERPRINT when the white cartridge is installed**

Printer Display Reads:	Replace with:
Cyan low/out/empty	Cyan (Back of Printer)
Magenta low/out/empty	Magenta
Yellow low/out/empty	Yellow
Black low/out/empty	Black/White/Clear (check which cartridge is installed) (Front of Printer)

### **‘B’ Configuration Supplies Replacement Guide**

**This is for white OVERPRINT when the white cartridge is installed**

Printer Display Reads:	Replace with:
Cyan low/out/empty	Black/White/Clear (check which cartridge is installed) (Back of Printer)
Magenta low/out/empty	Magenta
Yellow low/out/empty	Yellow
Black low/out/empty	Cyan (Front of Printer)

**NOTE:** When moving cartridges between ‘A’ and ‘B’ configurations, the toner and drum units must move as a set. Never disengage or turn the blue lever of the toner unit during this process. You cannot put the white toner cartridge into the cyan drum unit (or vice versa) as it will cause catastrophic contamination, rendering the drum unit unusable.

It is recommended that you power down your printer before moving cartridges to prevent electrostatic damage.

The black, white or clear cartridges can never be installed together. Only one of these 3 cartridges can be installed at any one time.

# iColor® 500 printer settings for iColor®

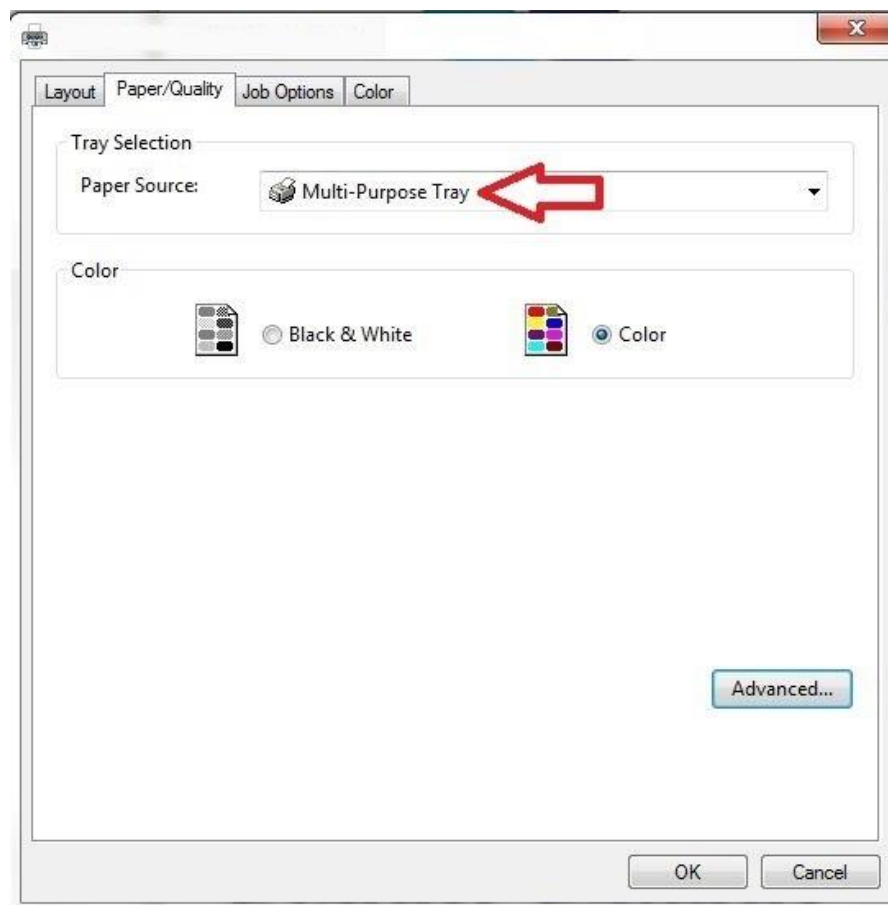
## Premium Transfer Media without the iColor®

### TransferRIP Software

These instructions are only when NOT using the iColor® TransferRIP software. When using the RIP, all settings are adjusted within the software itself and overrides all other settings. The following is shown using the PostScript or **PS driver**. The choices are the same for the **PCL driver** but the dialog boxes are different.

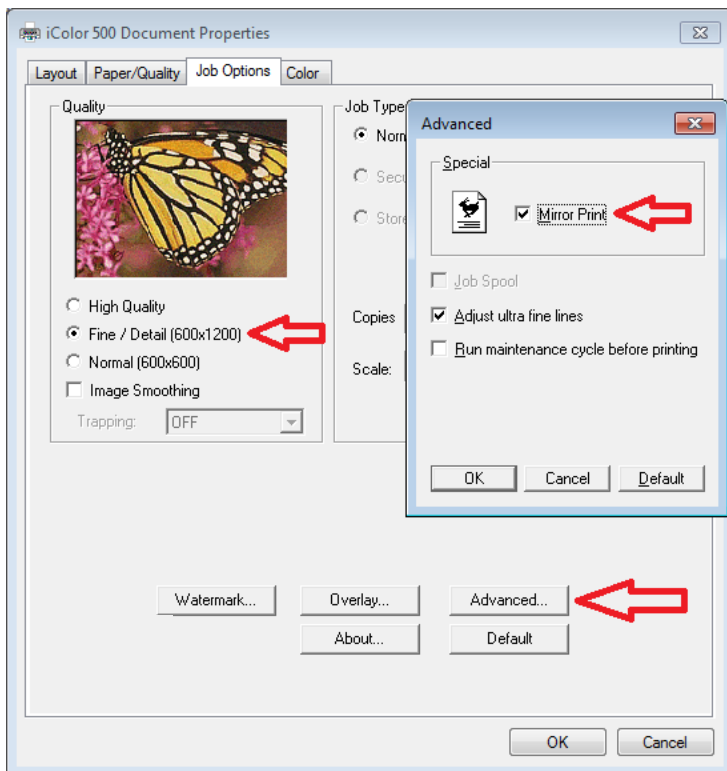
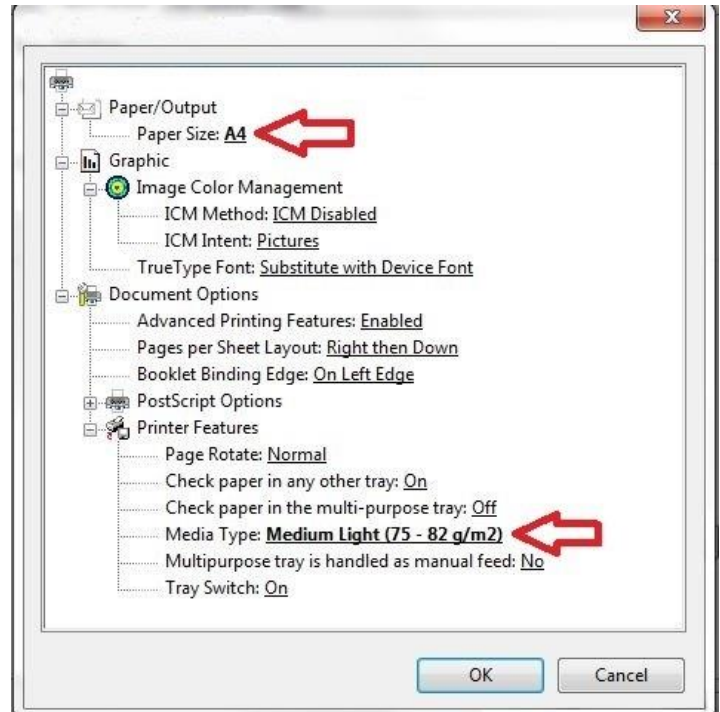
These can be set as **Printer Preferences** from Devices and Printers or as **Document Properties** when printing. Setting them as Printer Preferences means they will be the same the next time you use the printer.

1. Under the Paper/Quality tab, set the paper source to the **Multi-purpose Tray**.



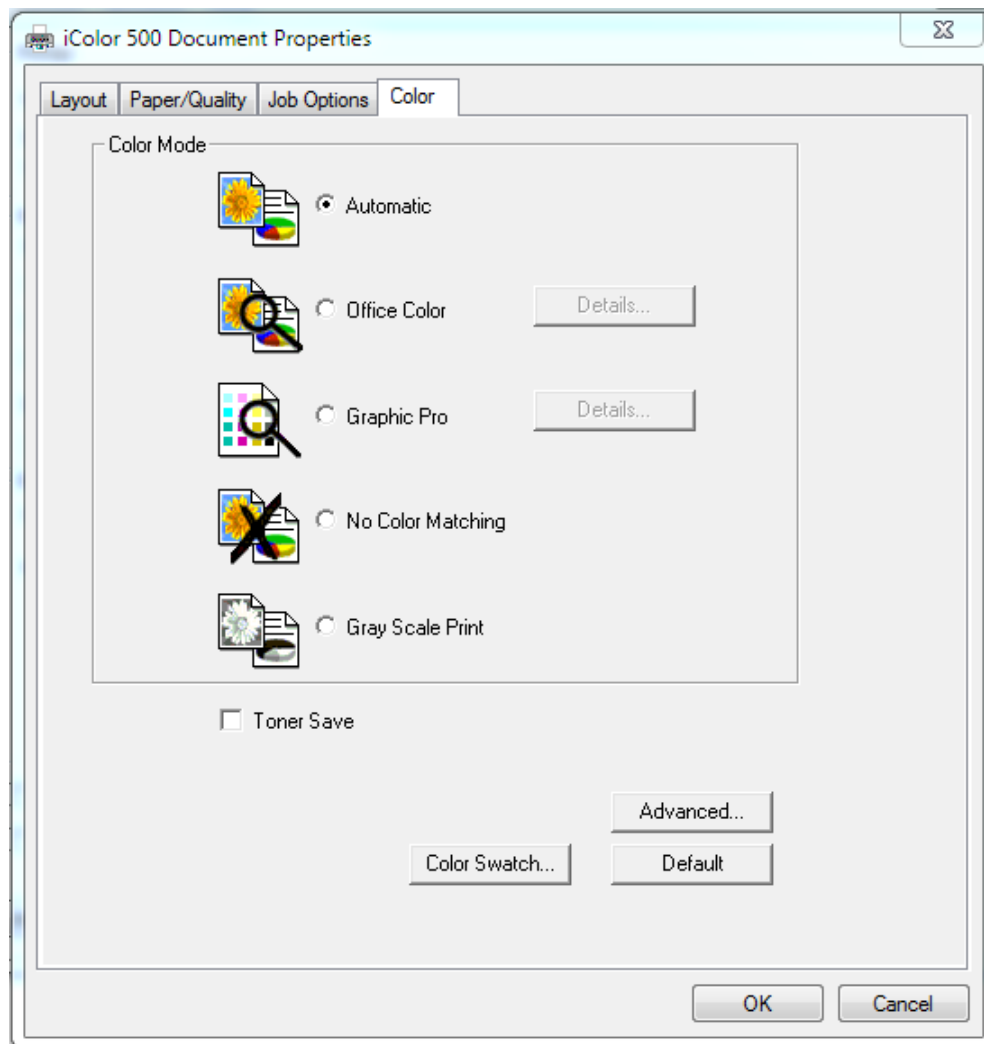


2. Click **Advanced** button. Paper type should be 'Medium Light' and the page size should be 'A4'. If you are printing a very densely covered page, it is suggested you choose "heavy" for the paper type to avoid a paper jam at the fuser. If you do get a paper jam, shut off the printer, remove the fuser and clear the jam, then print some test pages on regular paper to clear the excess toner out of the fuser. Then reprint with "heavy" paper settings.



3. The Job Options tab is normally left at defaults. We suggest the print quality be set to "Fine". Click the **Advanced** button and select the option for **Mirror Print**. This will ensure the image looks correct when transferred to a garment. Note: The PCL Driver does not include this option.

4. Click the Color tab and turn off the **Toner Save** mode. The **Color Swatch Utility** allows you to print a range of colors to find settings matching the one you want. The help button on it describes how to do this.



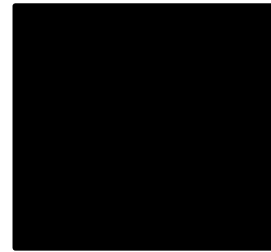
5. Please do not alter any of the factory settings on the machine itself. Doing so can produce undesired results

Visit [www.icolorprint.com/support](http://www.icolorprint.com/support) for full written and video instructions all iColor® Transfer papers

# Using white with the iColor® 500 Printer without the iColor® TransferRIP Software

With the White kit installed, the machine will print white where the image/text displays black, by default. Please note that vector and line art images, including text, are likely to produce the best results. You must create images using true black:

CMYK: C: 0% M: 0% Y: 0% K:100%



This is true black color. Text and graphics created in this color will give the best white results when printed. These printers will also print composite black with the white kit installed. For true black printing, simply replace the white kit, with the included black kit.

## Using white with colors to assure transfer of halftones

Images that contain halftones or gradients can cause problems with self-weeding transfer media. This is because the background is assumed to be white and nothing is printed there.

It is usually easiest to use an image editing program to create a copy of the image using true black as illustrated above. Select the entire image and change the color, saving as a separate file.

Print the standard colors onto a transfer sheet first, then print the true black image you saved previously over the printed color image by passing the transfer sheet through the printer a second time using the multi-purpose tray. From there follow the usual process for the iColor® premium transfer media.

# Setting the Multipurpose tray to work with specific sized papers

iColor® transfer papers come in a variety of sizes, so it is recommended that you set the MPT tray to the size of the paper that you most commonly use. If the MPT tray identifies a paper that is not within its set parameters, the iColor® 500 printer will prompt you to press the online button after each print. Adjusting the settings will avoid this for the specific size you set.

The following instructions are for printers that have been set up within a network, using an IP address. Use your web browser to change the default settings:

- 1) From your web browser, go to 192.168.X.X (the specific IP address assigned to your printer)
- 2) Navigate to the admin menu and enter the username (root) and password (aaaaaa) (six lowercase letter a's)
- 3) Change all settings to match the following for Printer > Print Setup > Print Method:

The screenshot displays the printer's web interface. On the left is a navigation menu with the following items: Status, Printer (selected), General Printer Settings, Print Setup (selected), Print Method (selected), Print Quality, Print Adjust, Media Setup, Color Setup, Printer Config Setup, PCL Setup, IBM PPR Setup, EPSON FX Setup, Interface (USB, Parallel), Memory Setup, Time Setup, System Setup, Save / Restore, Hex Dump, Print Information, Network, Job List, Print, Security, and Maintenance. The main content area is titled 'Print Method' and includes a description: 'The Print Menu determines the default attributes of a print job. Most print jobs include commands that override these settings.' Below this are several sections: 'Output Options' with settings for Copies (1), Duplex (On), Duplex Last Page (Skip Blank Page), and Binding (Long Edge); 'Paper Input Options' which contains a table for Tray Switch and Tray Select settings; 'Edit Size' with settings for Edit Size (Cassette Size), Default Orientation (Portrait), Form Length (56 LINES), and Media Check (Enable); 'Trapping' with Trapping set to Off; and 'Other' with Mono-Print Speed set to Auto.

Tray Switch		Tray Select	
Auto Tray Switch :	On		
Tray Sequence :	Down	Tray Sequence :	Down
		Paper Feed :	MPTray
		MPTray Usage :	When Mismatching

- 4) Change all settings to match the following for Media Setup. The MPTray setting is the most important setting. The Media Type and Media Weight can be set to your most common settings, but the RIP will over ride:

>> Status

>> Printer

•General Printer Settings

•Print Setup

•Print Method

•Print Quality

•Print Adjust

•Media Setup

•Color Setup

•Printer Config Setup

•PCL Setup

•IBM PPR Setup

Media Menu

The Media Menu describes the paper or media loaded in the printer's paper trays.

Tray Configuration

Tray	Paper Size	Media Type	Media Weight
Tray1	Cassette Size ▼	Plain ▼	Medium ▼
MPTray	Letter ▼	Glossy ▼	Heavy ▼

User Setting

You can set "Printing area" and "User Media Type".

>> Specify the printing area

>> Specify special sizing of paper and assign to a Tray

- 5) With these settings in place, you will be able to print to the MPTray without pressing the online button at all (even for the first page out, it prints completely unattended). When using the printer without the iColor® TransferRIP, the printer will now always look for paper in the MPT first. If it does not find it there it will pull from the tray on bottom so this setting works great for all uses.
- 6) When using the iColor® TransferRIP, you should not check the 'Force Manual Tray' box and the input tray should be set to 'Printer Default'.

Print settings:

Media Type: Medium, 83 - 104 g/m2

Custom Media: ☐ Force Manual Tray and User defined Media Size

Input Tray: Printer Default

Output Tray: Automatic

Offset X: -4.00

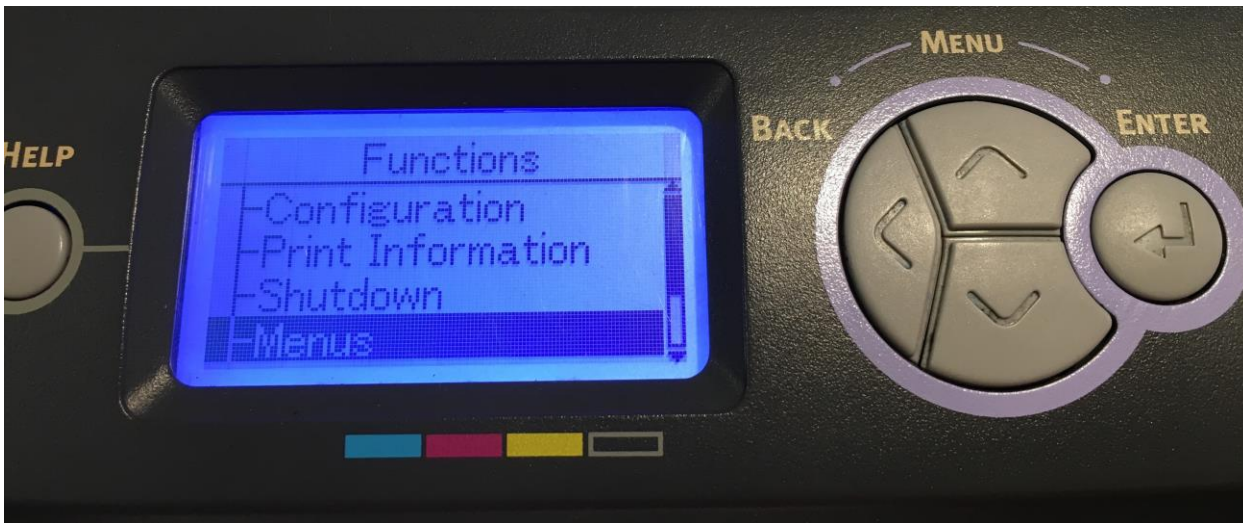
Offset Y: 0.00

Measure Units: mm

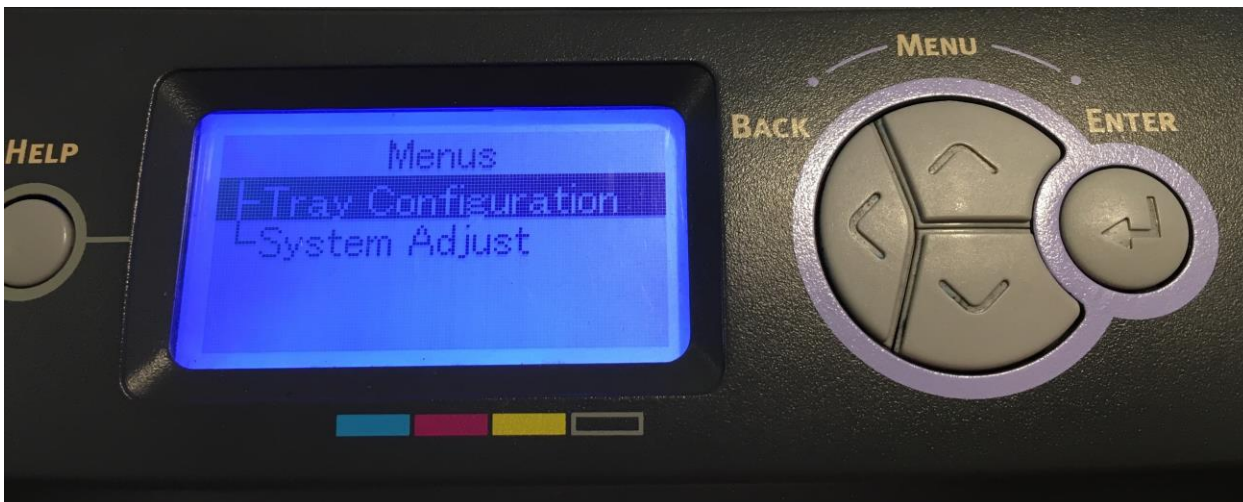
If you are not networking your printer, the following instructions are for printers that have been set up via direct connection using the USB port:



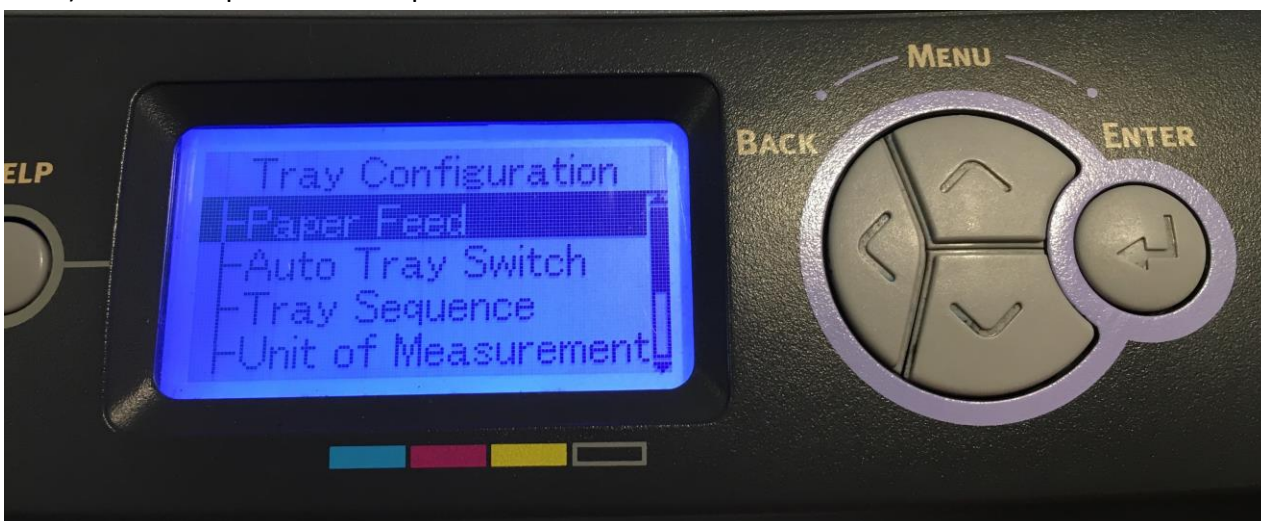
1) Press the 'Menu' button and scroll down to 'Menus' and press enter



2) Select 'Tray Configuration' and press enter



3) Select 'Paper Feed' and press enter

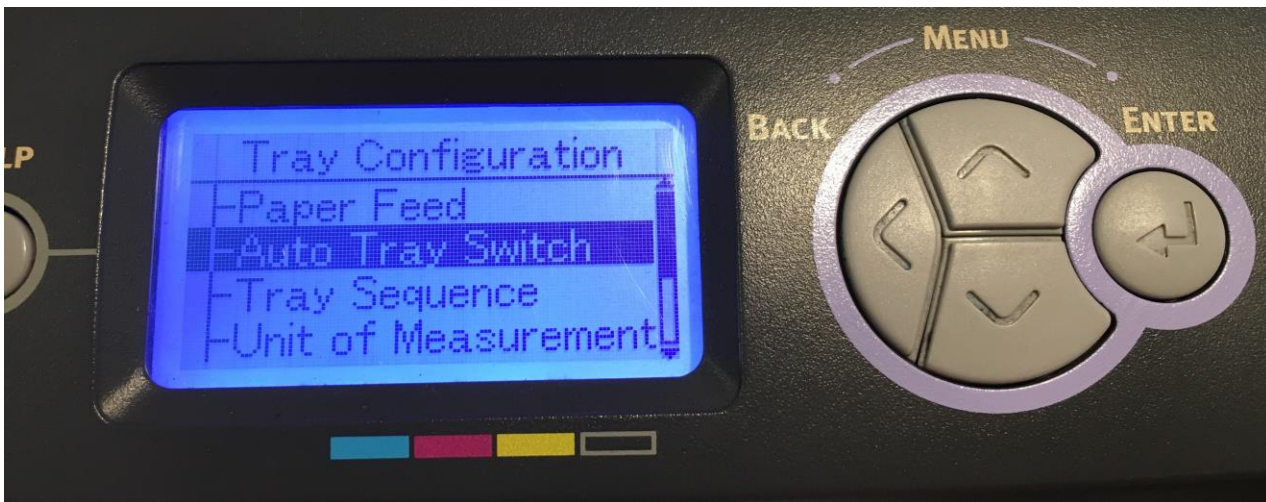




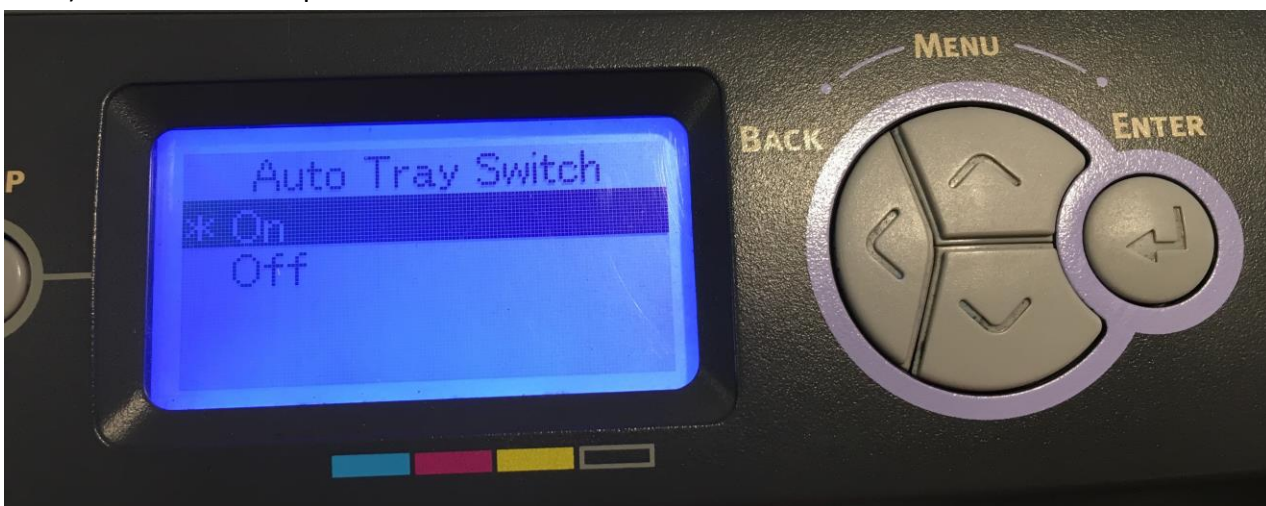
4) Select 'MPTray' and press enter



5) Press back, select 'Auto Tray Switch' and press enter

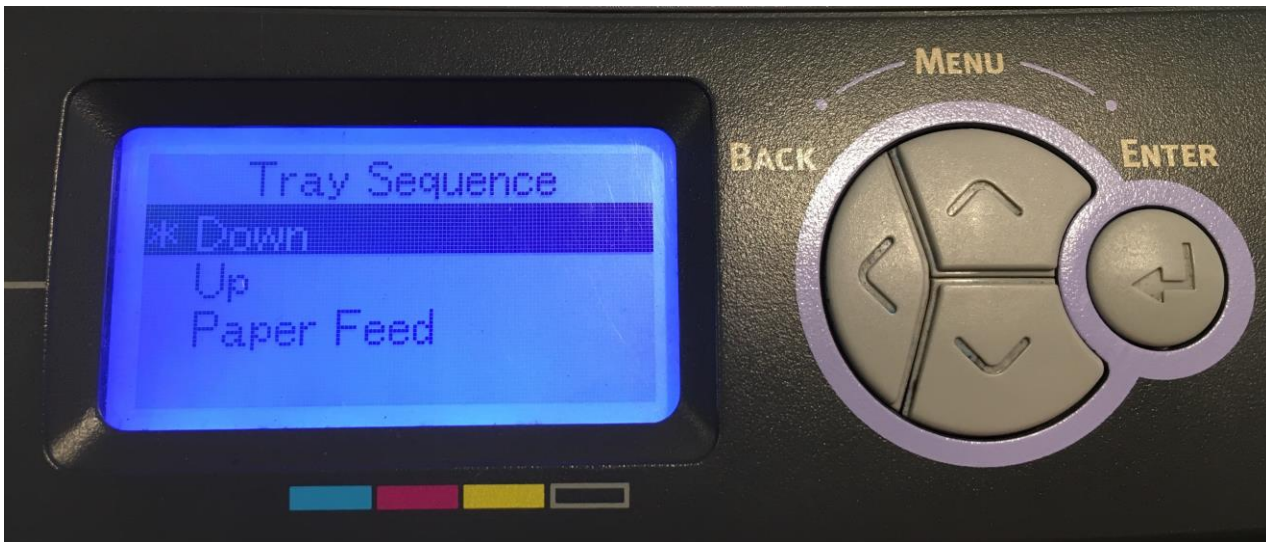


6) Select 'On' and press enter





7) Press back, select 'Tray Sequence', select 'Down' and press enter



8) Press back, select 'MPTray Config' and press enter

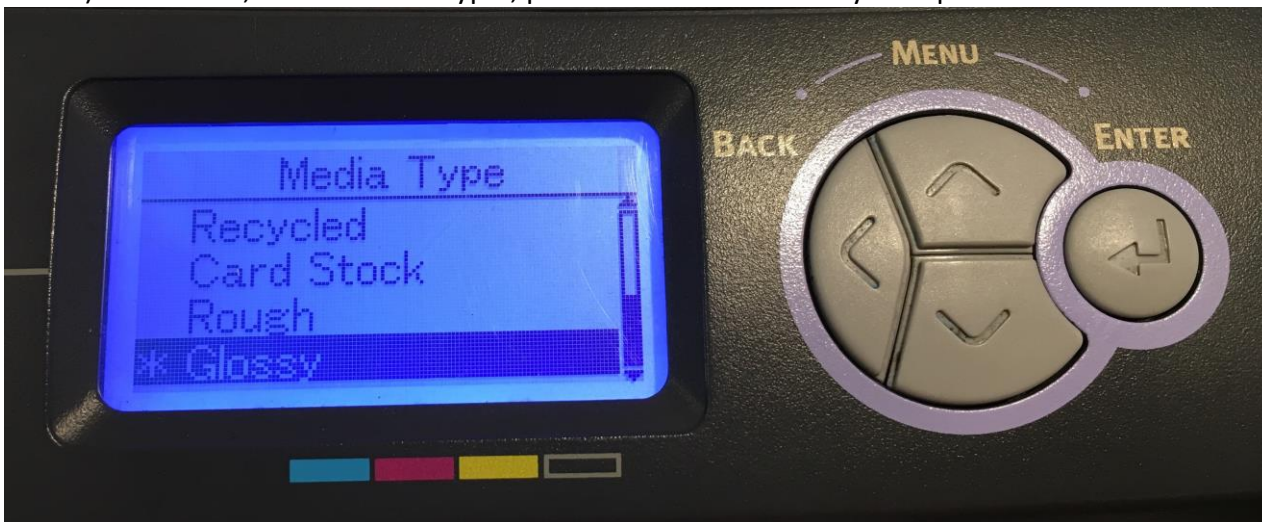


9) Select 'Paper Size', press enter. Select 'Letter' and press enter

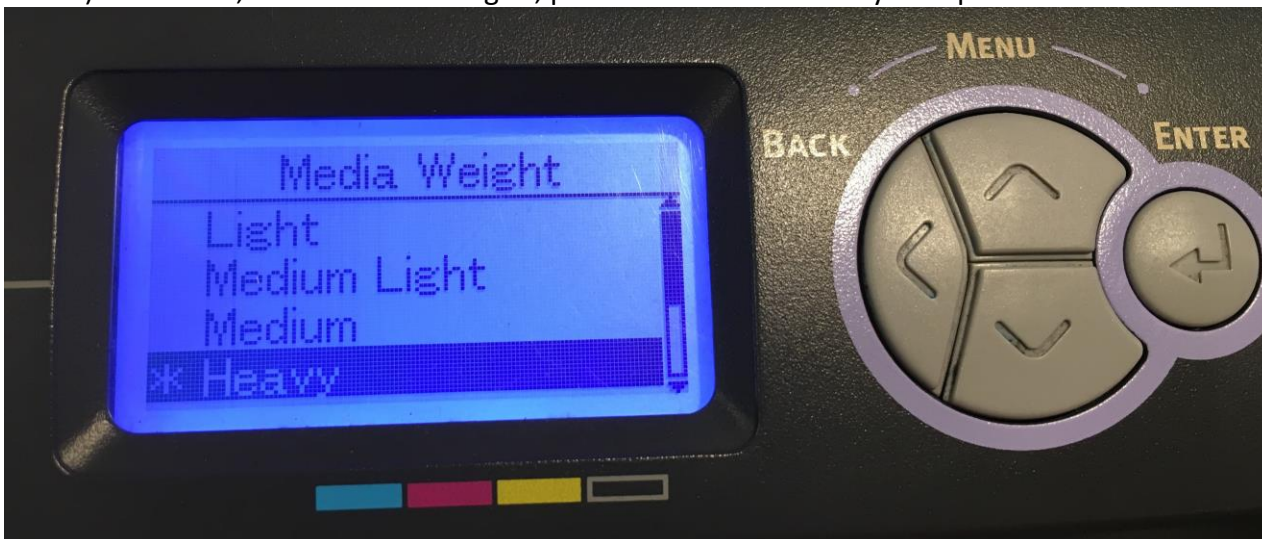




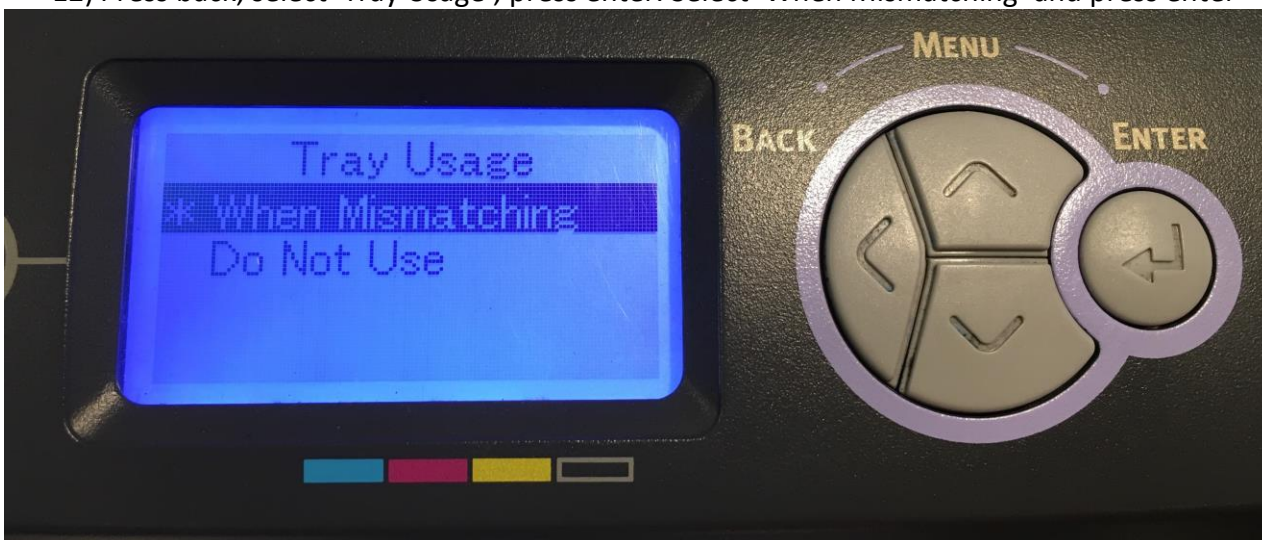
10) Press back, select 'Media Type', press enter. Select 'Glossy' and press enter



11) Press back, select 'Media Weight', press enter. Select 'Heavy' and press enter



12) Press back, select 'Tray Usage', press enter. Select 'When Mismatching' and press enter

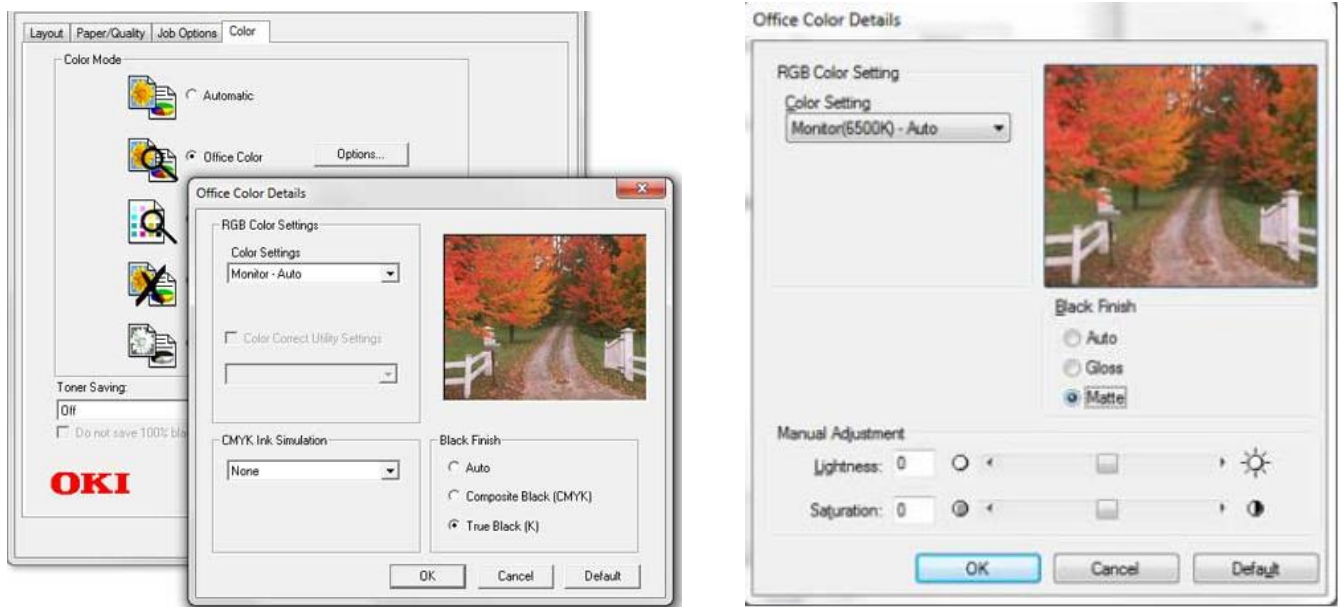


13) Press the online button to return to the main screen. You are now ready to print on your preferred media through the MPTray without pressing online!

## Printing tips

When transferring images with halftones, it's possible that some of the adhesive from your 2 step paper will not transfer over to the toner during the first step. If you see this happen with your image, just reprint the image and then print a layer of white behind (On top) of the image to thicken up the density and give the adhesive something to stick to. Halftone colors use much less toner. Printing the white over the image will fill in the gaps. It will not change the color, but gives the adhesive something to stick to. To do this, print your image in color as normal, then using a graphics program, create an outline of the image slightly smaller than the actual size, and fill that outline in with 100% Black (K). If using the iColor® TransferRIP, this can all be done in one pass without any additional graphic manipulation.

The iColor® 500 by default will print all black graphics and images using composite black and text using true black. This could cause your solid black graphics to print grey/pink instead of solid white (when using the white kit). In order to address this, please go into the printer driver and adjust as follows. Your specific driver might look like either of these two choices below. This change will force all black images to print using only the white kit and therefore giving you solid white images as desired.



There are many variables that could produce different results. Specific steps may need to be altered based on:



- Type and brand of Heat Press: The temperature and duration varies slightly based on the heat press being used. All instructions are based on using a Hotronix Fusion press. Clam shell and swing away presses may also yield different results.
- Type of image: Photos or full color graphics may require a longer press time than vector images or text
- Type of garment or substrate: Cotton, Polyester, and Spandex material all respond differently to heat, as do hard surfaces like acrylic or wood. All textile instructions are based on cotton garments
- Toner Coverage: Halftones in image may cause undesired results. Toner coverage should not be less than 50%, otherwise there will be issues with transferring the adhesive to the transfer sheet. Halftones can be corrected by printing white on top of color (either running the sheet through the printer a second pass, or using the iColor® Transfer RIP Software to apply a white layer in one pass). This will help with toner coverage and proper adherence to the garment.

Consult the iColor® knowledge base for specific instructions on a variety of transfer paper offered at:  
<http://www.icolorprint.com/support>

Technical Support Email: [support@icolorprint.com](mailto:support@icolorprint.com)

Technical Support Phone: 631-590-1040, Option 2

# iColor® 500 System Specifications

**Print Speed:** Print Speed: Up to 34 ppm Color and 36ppm Monochrome  
(Transparency setting speeds may vary)

**Processor:** 533 MHz

**Duty Cycle:** Up to 100,000 pg/mo.

**Duplex:** Optional

**Memory:** Standard 256 MB; maximum 768 MB

**Resolution:** 1200 x 600

**Emulation:** PCL® 6, PCL 5c; PostScript® 3™

**Operating Systems:** Windows 10, Windows 8.1, Windows 7, Windows Vista, Server 2012, Server 2008 R2 x64, Server 2003/2003 x64; Mac® support – OS X 10.5 and higher

**Interfaces:** 10/100-TX Ethernet, High Speed USB v2.0

**Multipurpose Tray:** Standard 100-sheet; handles transfer media, card, mailing label stock and banners

**Paper Cassette:** 530-sheet Legal/Letter/Universal

**Paper Sizes (Min./Max.):** 5.8" x 8.3" to 8.5" x 14"

**Paper Weight:** Main Tray 17 lb. bond – 54 lb. bond/ 80 lb. cover (64 – 220 gsm); Multi-purpose Tray 17 lb. bond – 140 lb. index (64 – 256 gsm)

**Size: (WxDxH):** 17.1" x 21.5" x 15.3" (43.5 cm x 54.7 cm x 38.9 cm)

**Weight:** 60.8 lb. (27.6 kg)

**Power:** 120v or 230v