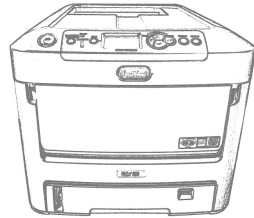
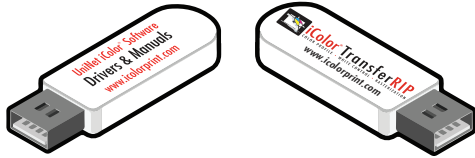
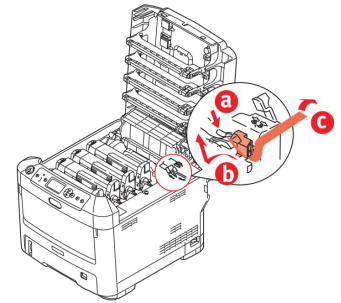


1. Remove the packing materials and check the components.

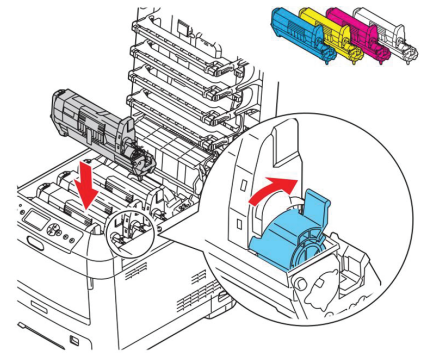
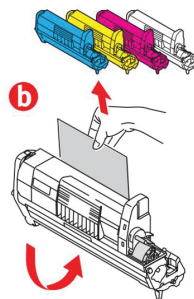
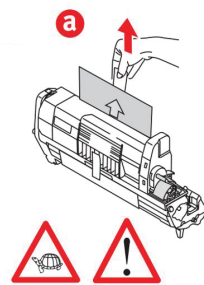
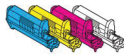
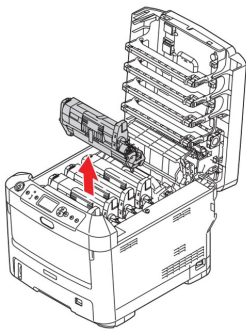


2. Remove the fuser lock.



3. Uninstall the cartridges to remove the protective orange film from each. Lock the blue lever forward. Reinstall the cartridges.

* Please note the blue handle on the white cartridge is already in the locked position *



4. Using the provided USB drive "UniNet iColor Software", install the driver.

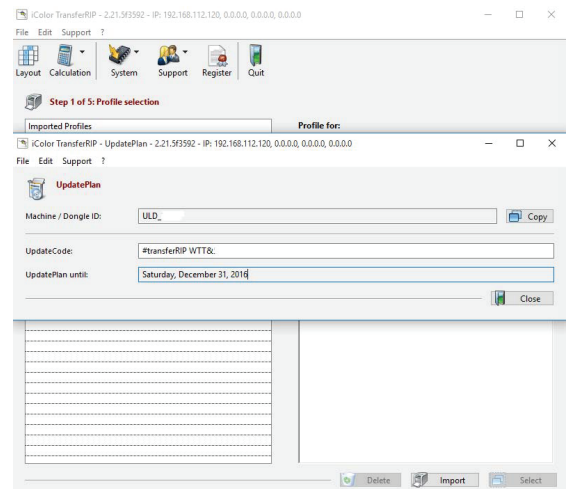
Only connect the Printer to the PC when prompted to by the software.

5. Connect the power cord and USB cable to the printer. Power on the printer.

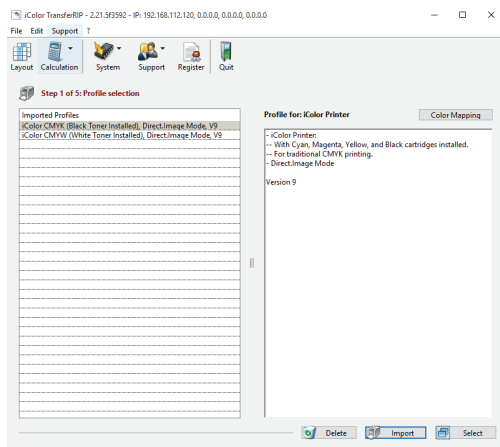
6. If purchased, install the iColor TransferRIP software and insert the dongle into an available USB port. The software is located on the "UniNet iColor Software" USB Drive.

When prompted, enter the Update Code.

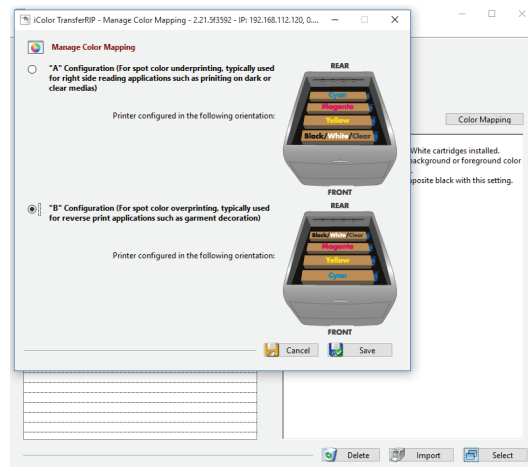
Your code is in a text file on the "UniNet iColor Software" USB Drive. Please copy and paste the entire string of code. The date below will automatically populate. Then click "Close".



7. In Step 1 of the iColor TransferRIP software, import the two profiles. The profiles are located on the “UniNet iColor Software” USB Drive.



8. Then choose the desired profile based on the Black or White cartridge being installed. Click on “Color Mapping”. Choose the desired color mapping option. The location of the cartridges in the printer must match the mapping in the software. Then click “Save” and select the desired profile.



Note: There are two options for “Color Mapping”

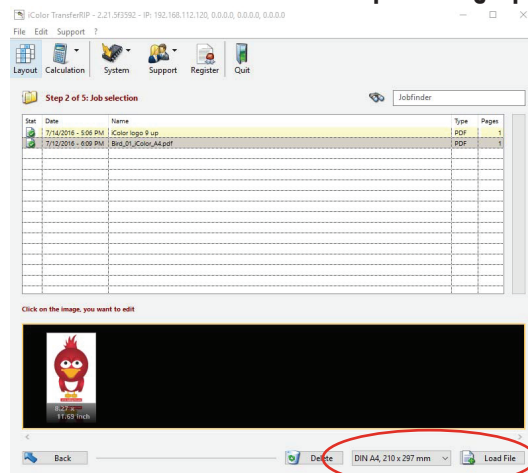


For Underprinting white.
Typically used for right side reading applications like printing color on clear or dark medias



For Overprinting white.
Typically used for garment decoration.

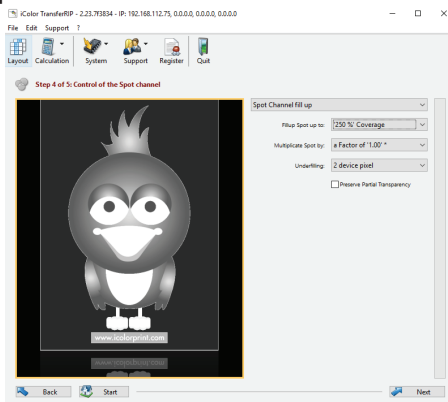
9. In Step 2 of the iColor TransferRIP software, select your paper size then click “Load File”. Then click the preview graphic.



10. In Step 3 of the iColor TransferRIP software, make any desired color adjustments to the artwork. Then click “Next”.

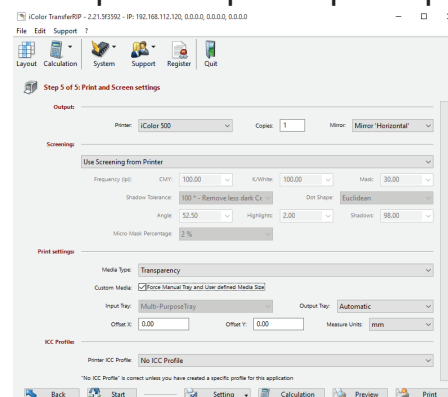


11. In Step 4 of the iColor TransferRIP software, modify the white coverage depending on media and artwork. 150% to 250% is suggested for most applications. Then click “Next”.



Note - Use of the “Underfilling” feature is highly recommended.

12. In Step 5 of the iColor TransferRIP software, adjust settings to print the artwork based on the media being used. Use of the MPT Tray is recommended. Then click “Print”. When prompted, press the “online” button on the front panel of the printer to print the job.



For detailed instructions please refer to the iColor 600 Printer User Manual and the iColor TransferRIP User Manual

UniNet 3232 W. El Segundo Blvd, Hawthorne, California 90250 - sales@icolorprint.com | www.icolorprint.com